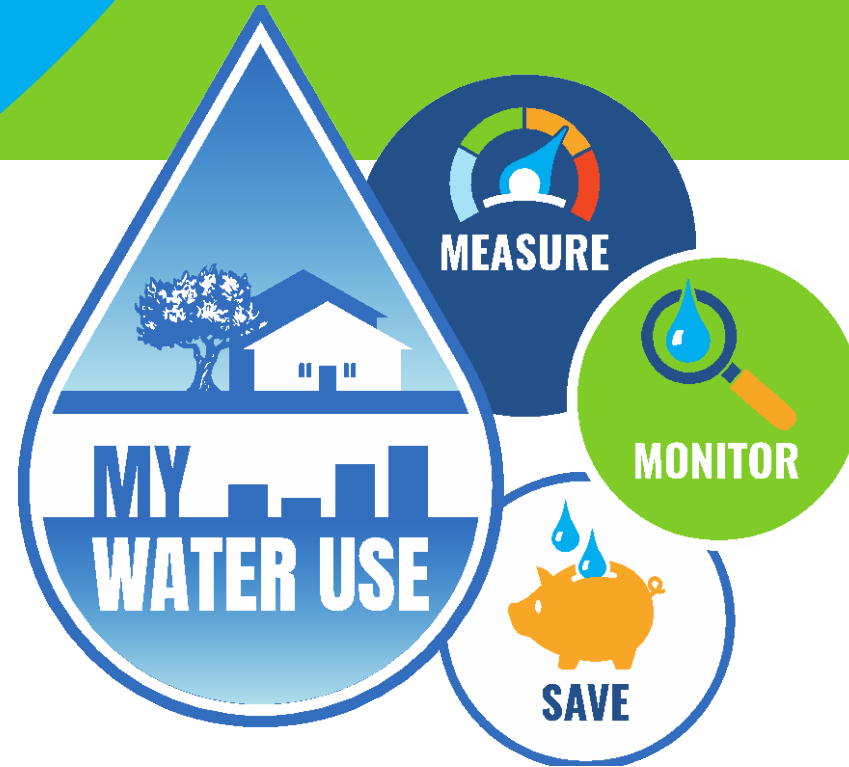




Welc[💧]ome!



Welcome to My Water Use



Access MyWaterUse Portal

CUSTOMER INFORMATION

OMWD
USA

760-753-6466
bsodeman@olivenhain.com

Account Number
1025040-298576

Status
Enrolled / Activated / Principal

Login ID
Test_OMWD

Date Enrolled
1/5/2023

Profile Last Updated
1/5/2023

[Manage](#) [Un-Enroll](#) [Reset Password](#) [Manage Notifications](#) [Stop Account](#)

LATEST BILL

Amount Due
\$0.00

Amount Due
\$0.00

Account Number
1025040-298576

Payment date
12/15/2021

Statement Date
12/15/2022

Pay Now

[Pay My Bills](#) [View Bill](#) [Pay as Guest](#)

PREVIOUS PAYMENTS

PAYMENT ACCOUNTS

LINKED ACCOUNTS

AUTOMATIC PAYMENTS

Showing Most Recent Document - Click to [View History](#) [View Usage](#)

documents.php

1 / 2 - 100% + [] []

OLIVENHAIN

Municipal Water District
1996 Olivenhain Road • Encinitas CA 92024
760-753-6466 • www.olivenhain.com

ACCOUNT SUMMARY

Name:
Customer-Account Number:
Service Address:
Statement Date: 01/14/2023
Balance Forward: \$0.00
Total Current Charges- Due 2/8/2023: \$179.90
Total Amount Due: \$179.90

WATER USAGE HISTORY

Meter #	Meter	Previous	Current	Usage	Days
Potable Water	1 1/2"	12/02/22	506	01/03/23	519

Units

40
30
20
10
0

Jan-22 Feb-22 Mar-22 Apr-22 May-22 Jun-22 Jul-22 Aug-22 Sep-22 Oct-22 Nov-22 Dec-22 Jan-23

Average Gallons per Day (this period): 281
Average Gallons per Day (one year ago): 134
The average monthly usage for your size meter (1 1/2") is 47 units.
Thank you for using water efficiently

BILLING DETAILS

Previous Balance: \$190.44
Payment - Check/Free: -\$190.44
Balance Forward: \$0.00

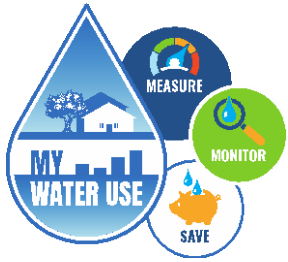
Potable Water - Domestic

Water Consumption	Usage	Rate	Charges
Tier 1: 0-6 units	6	\$3.68	\$22.08
Tier 2: 7-23 units	6	\$5.34	\$32.04
Other Charges			Charges
Backflow Processing Fee			\$6.50
Rate Reimbursement Credit			-\$0.83
Service Charges			Charges
SDCWA Infrastructure Access Charge			\$13.17
System Access Charge			\$106.94

Total Current Charges due 2/8/2023: \$179.90
TOTAL AMOUNT DUE: \$179.90

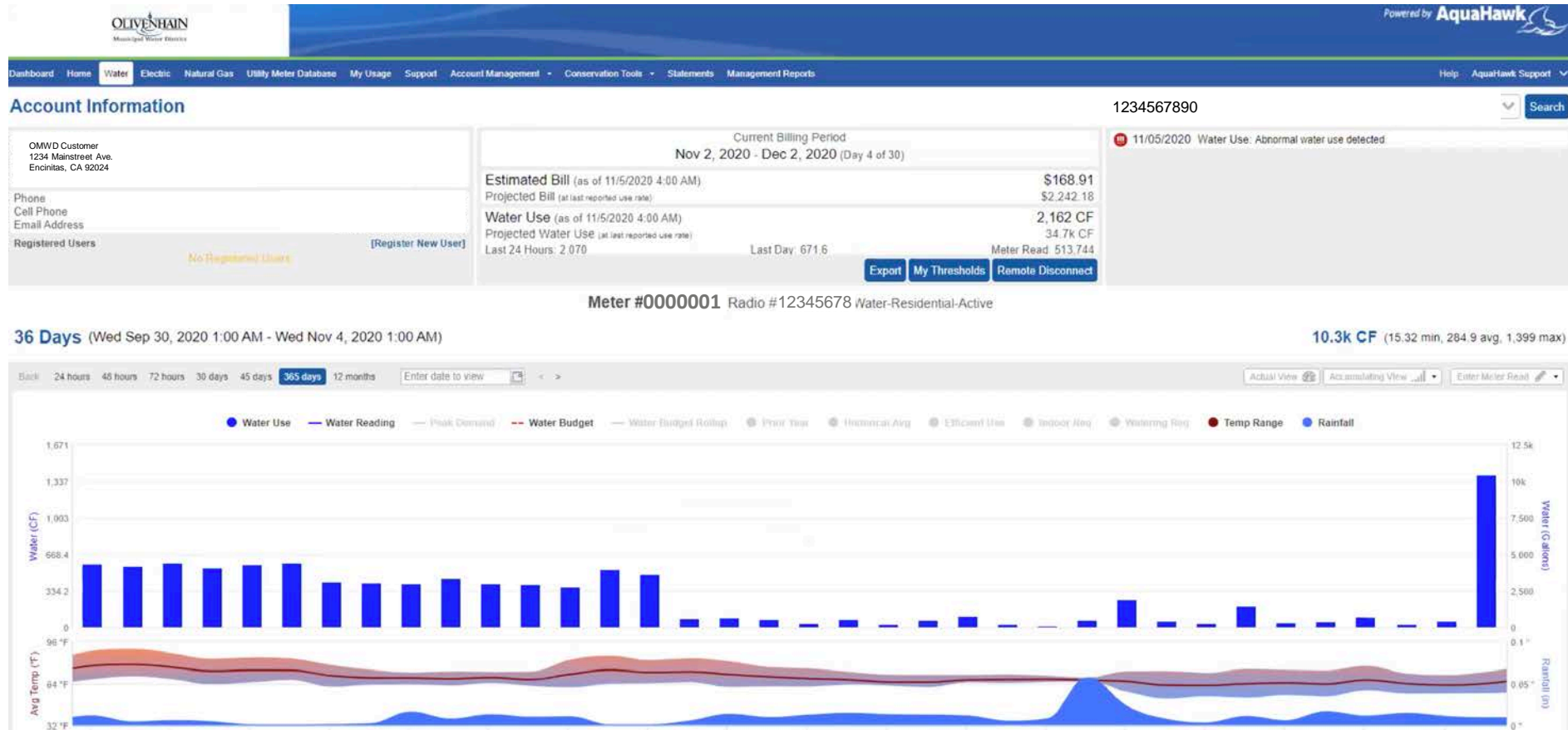
IMPORTANT MESSAGES

- Save water and money with rebates on water-efficient devices and turf replacement. Learn more at [www.olivenhain.com/rebate](#).
- Next month's board meeting will be held on February 15 at 4:00 p.m.
- Approximately 50% of the average customer's water bill this month goes to SDCWA and MWD for OMWD's cost of water.



Personalize your settings

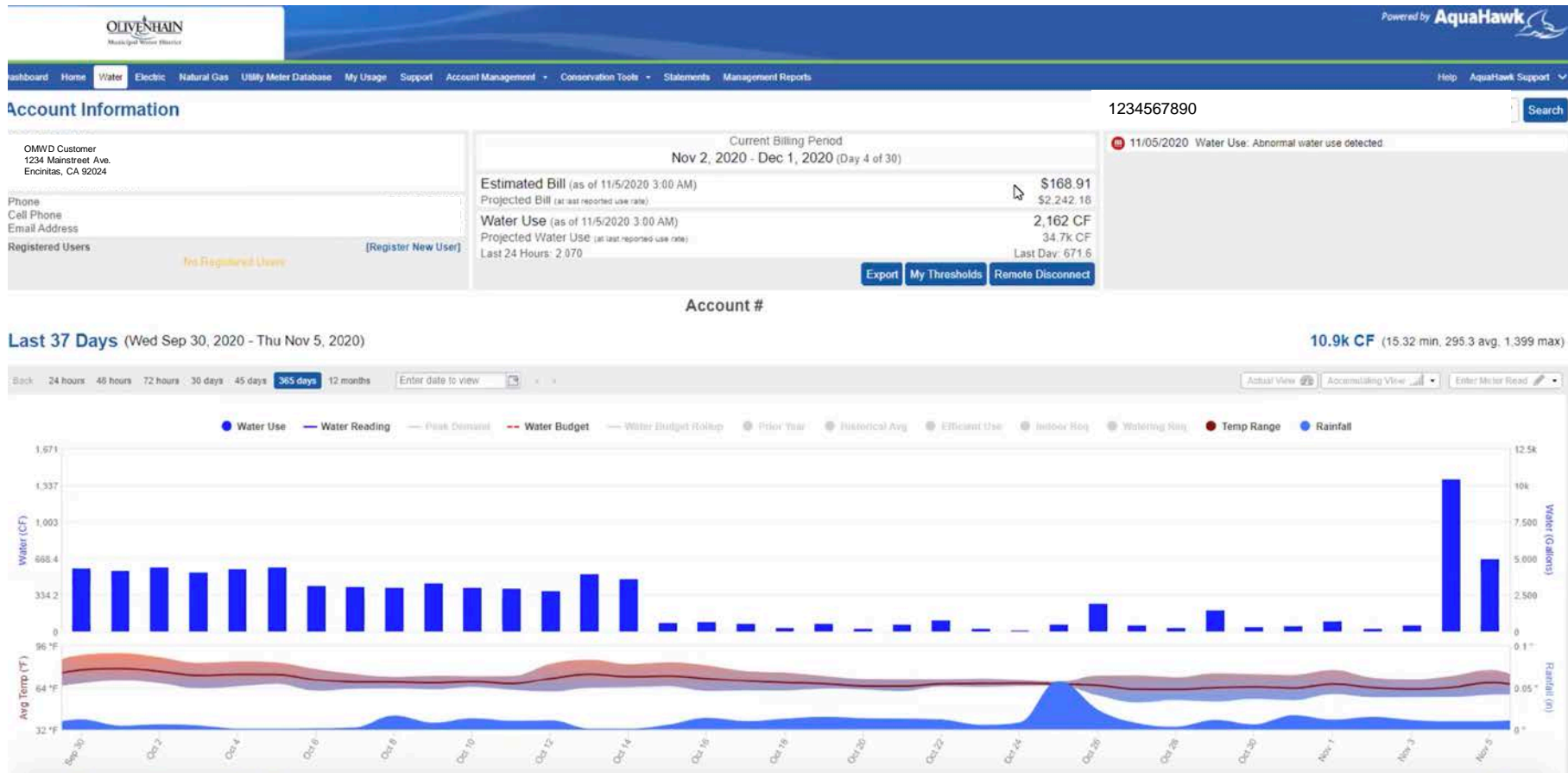
Here you'll find your account information, contact information, and other registered users on your account.





Measure your water use

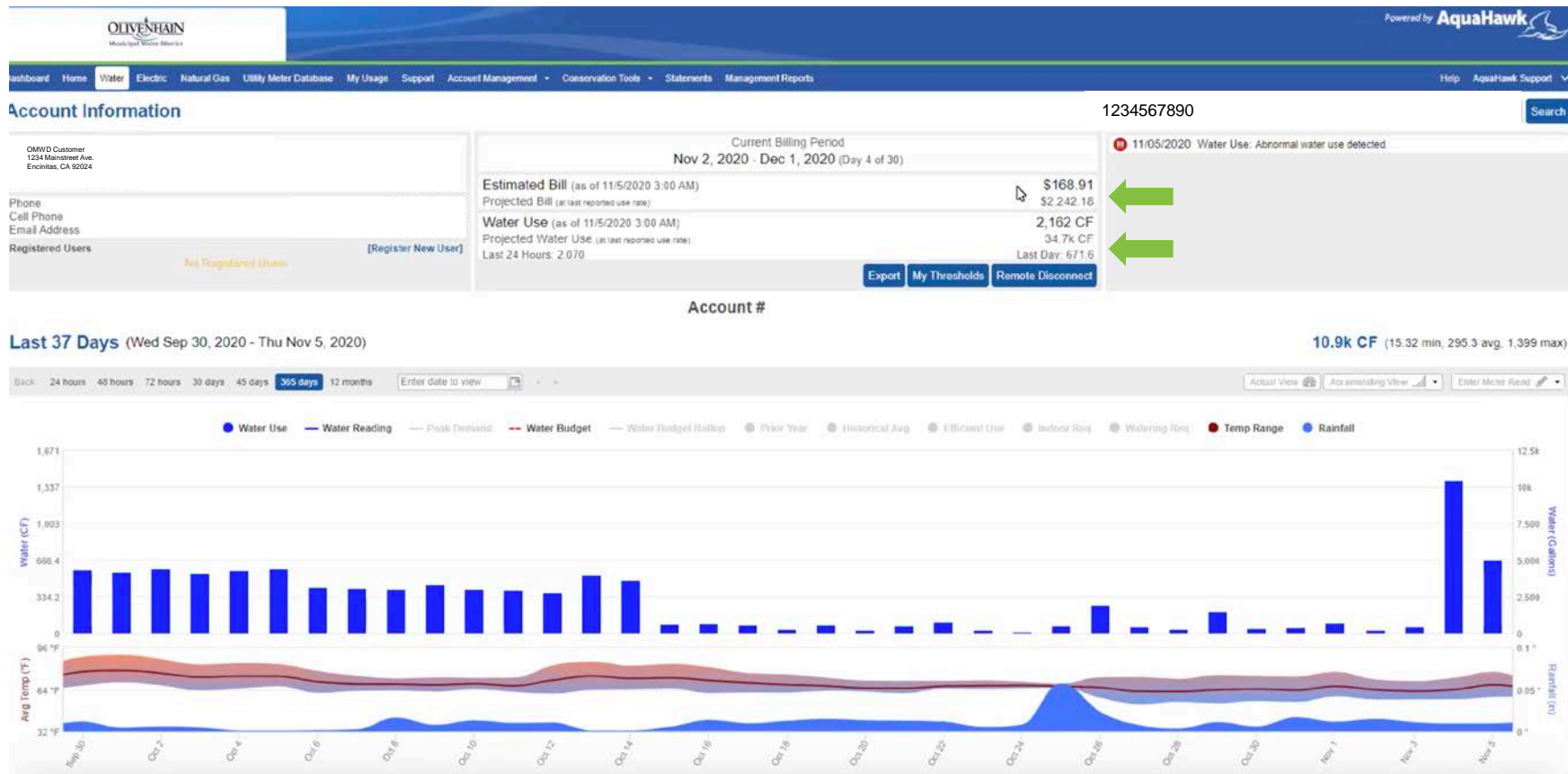
One of the benefits of the portal is having access to updates about your water usage, in near real time.





Measure your water use

You can see how much water you've used at any given point in time. You can also see an estimate of how much your monthly water bill will be IF you continue to use water at the same rate throughout the remainder of your billing cycle.

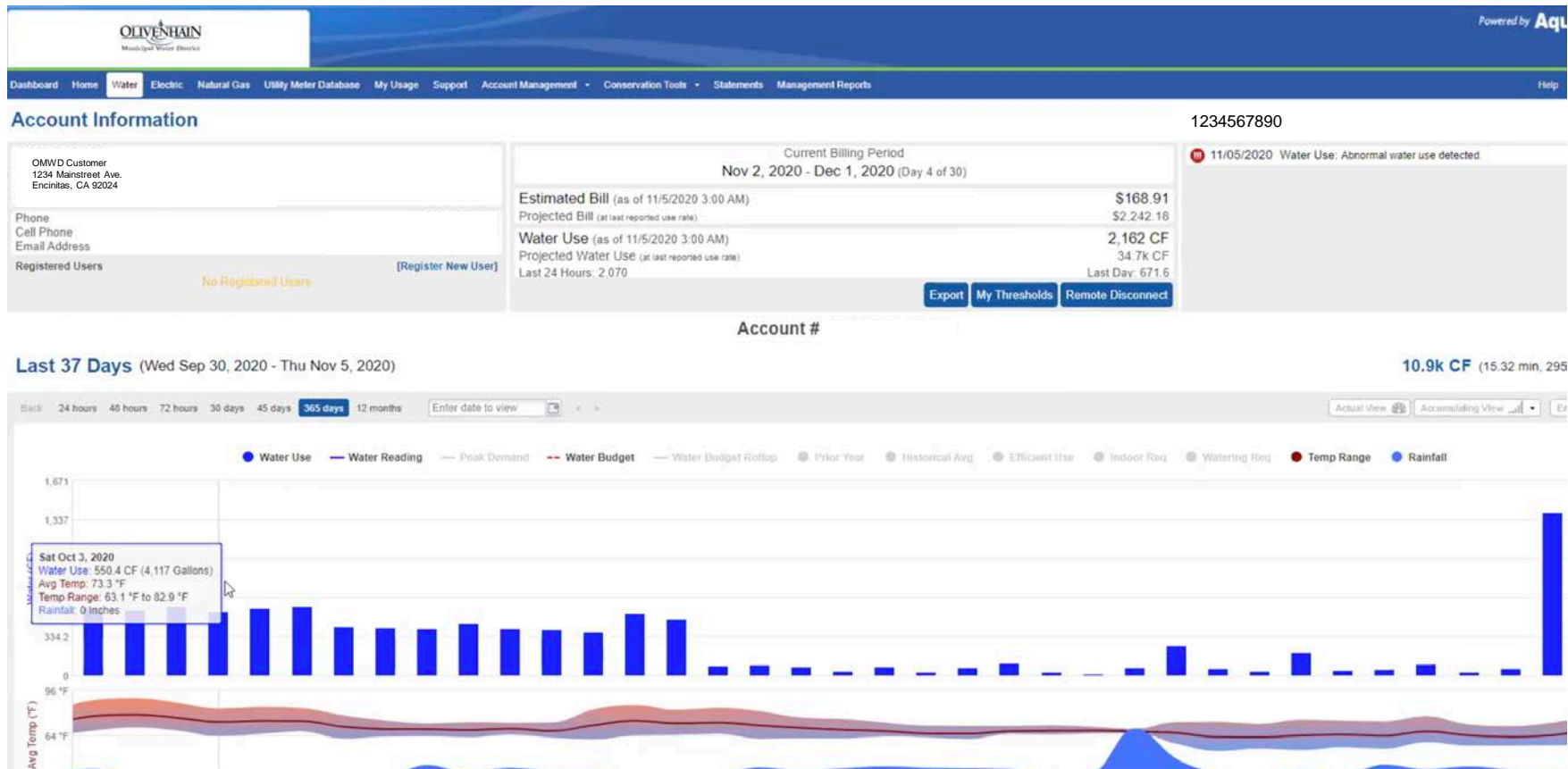




Measure your water use

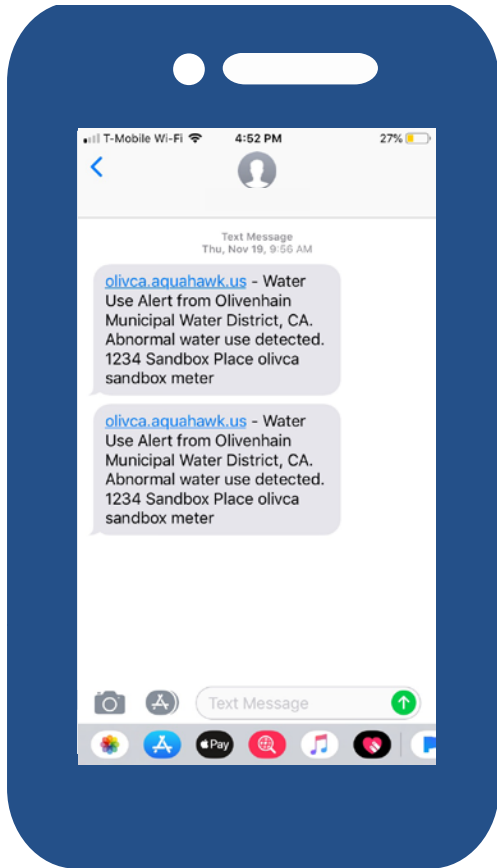
In the portal you can measure your water use by hour, day, week, month, or year.

For your monthly totals, keep in mind it's normal to see a spike in water use over the summer months vs. winter months. Customers tend to water more when temperatures are warm.





Set up alerts



In the portal, you can monitor your water use and sign up for alerts, so you'll know if there's a sudden spike in your water use. Before it's too late.

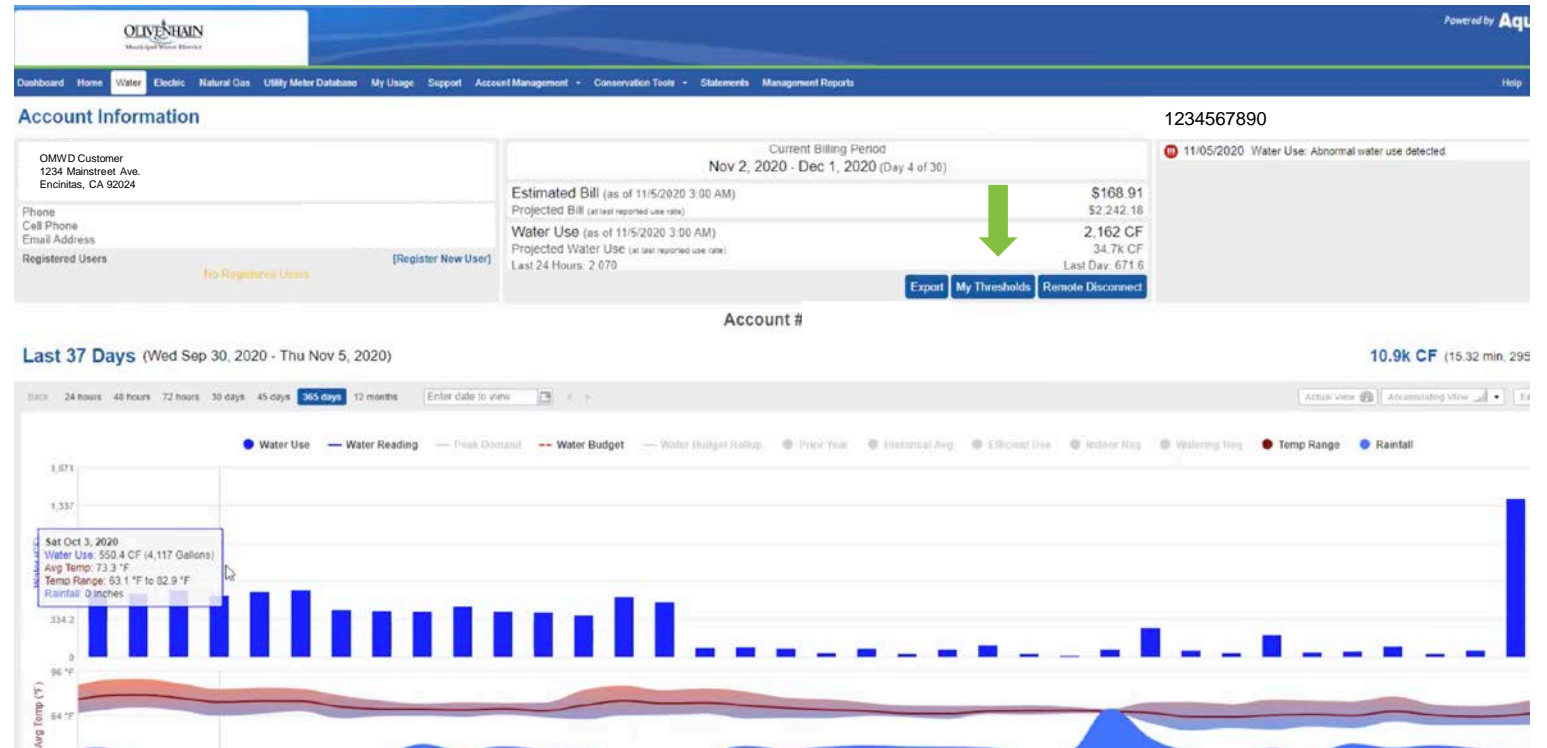
Think of these as your targets for water use. This gives OMWD permission to send you a message when you've gone over your set targets.



Set a billing threshold

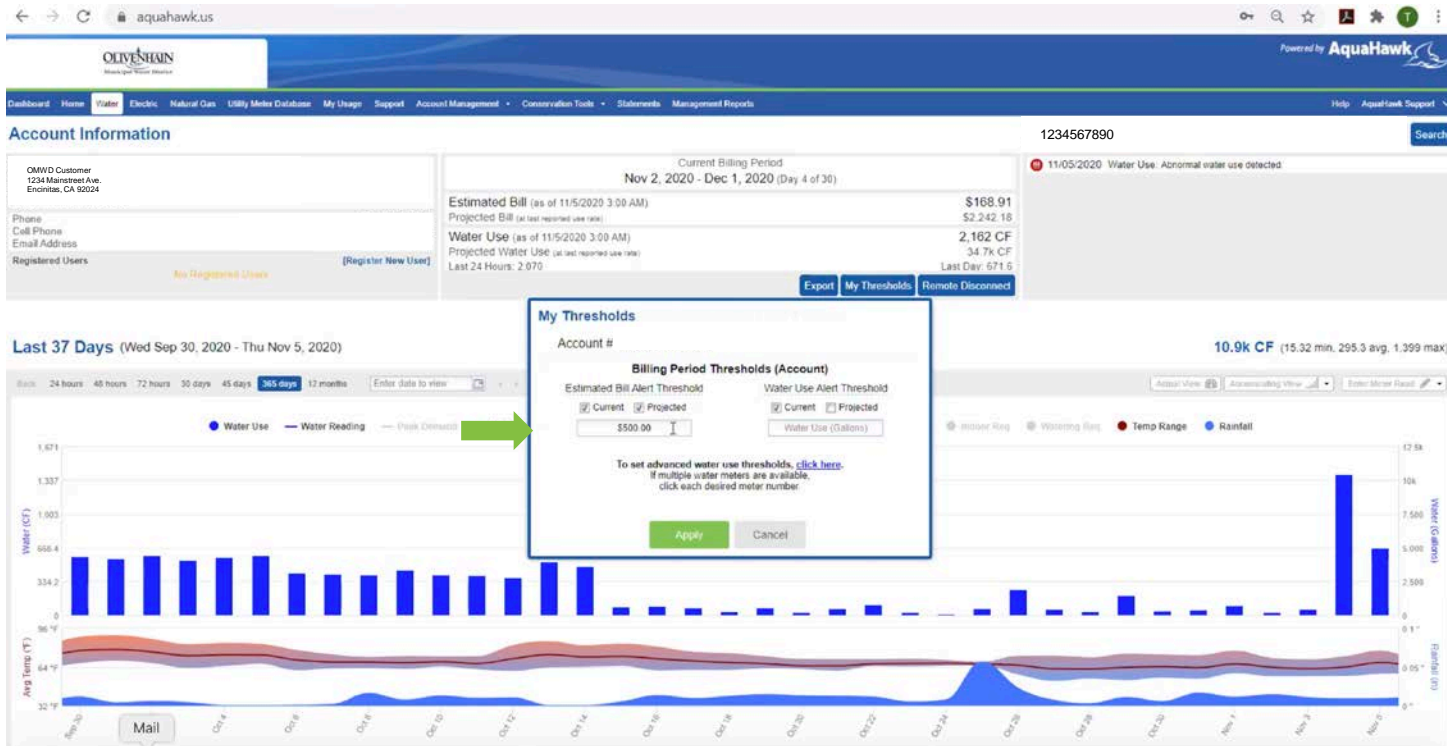
Most people set up alerts to be notified if they reach a certain billing threshold.

To set this up, click on My Thresholds.





Set a billing threshold

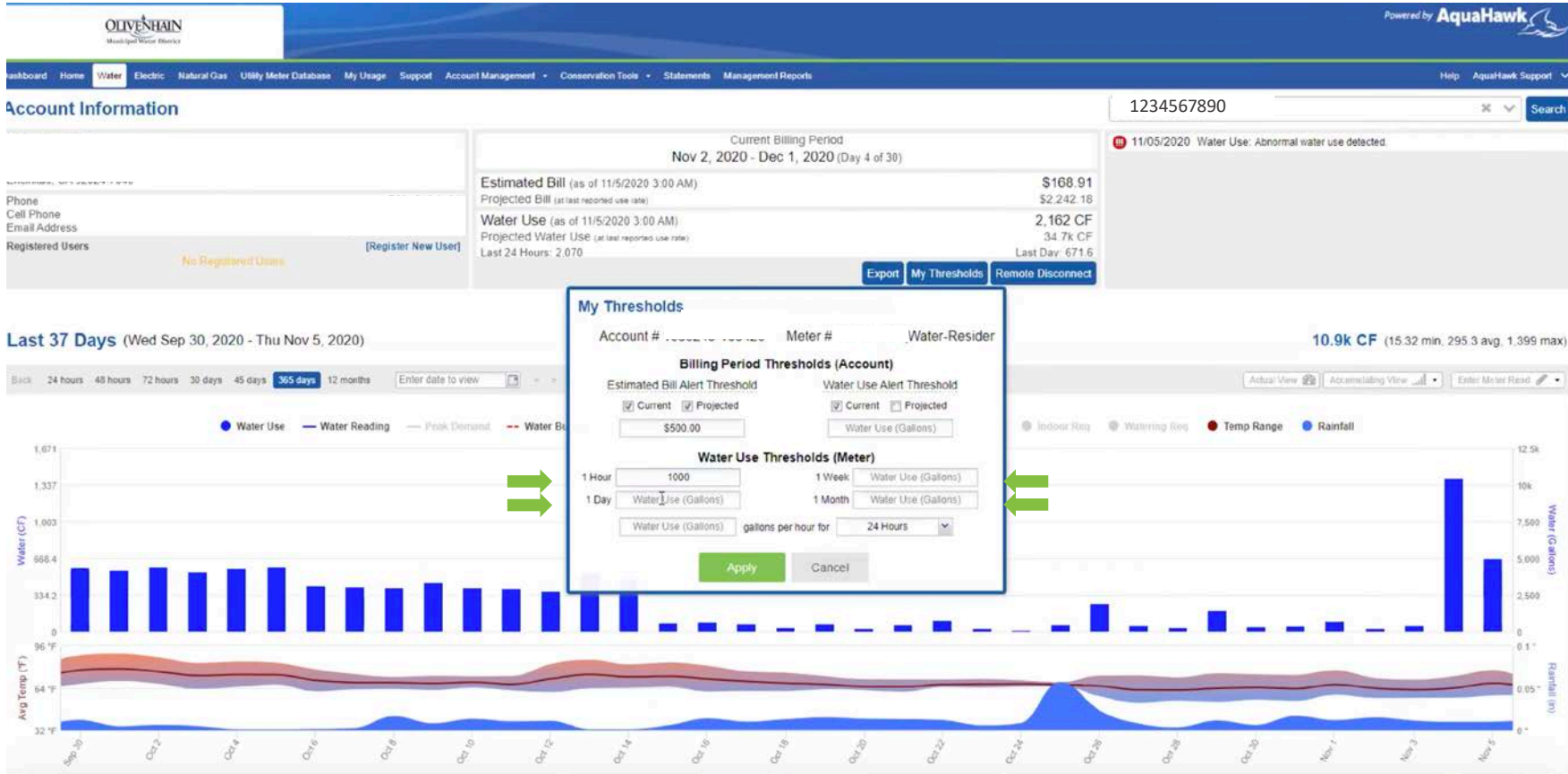


Let's say you want to be notified if your bill exceeds \$500.

You can set that threshold by entering the dollar amount here.



Set a billing threshold

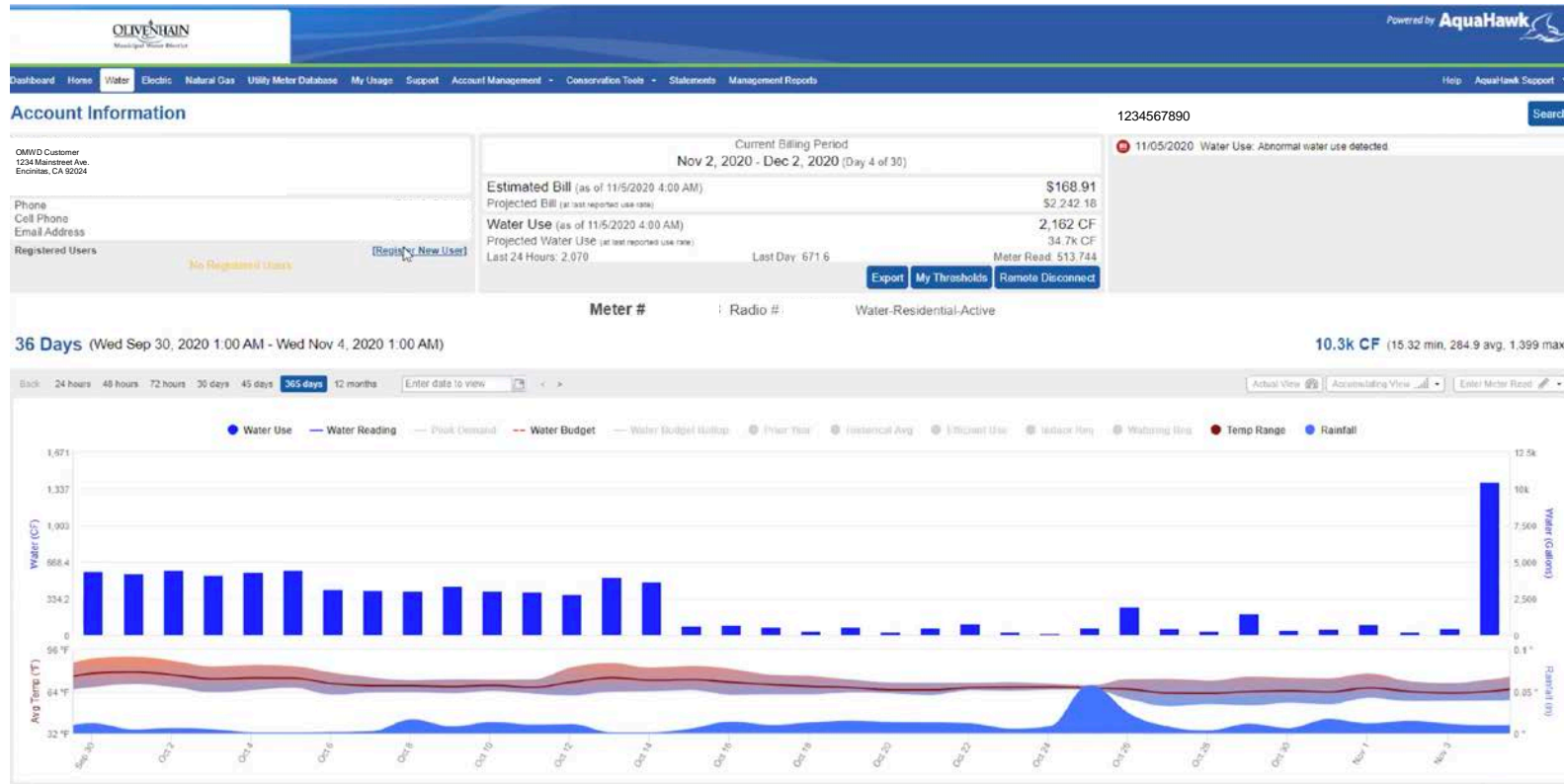


Let's say you have a more specific threshold in mind.

You can set an hourly, daily, monthly or yearly threshold here.



Register a new user

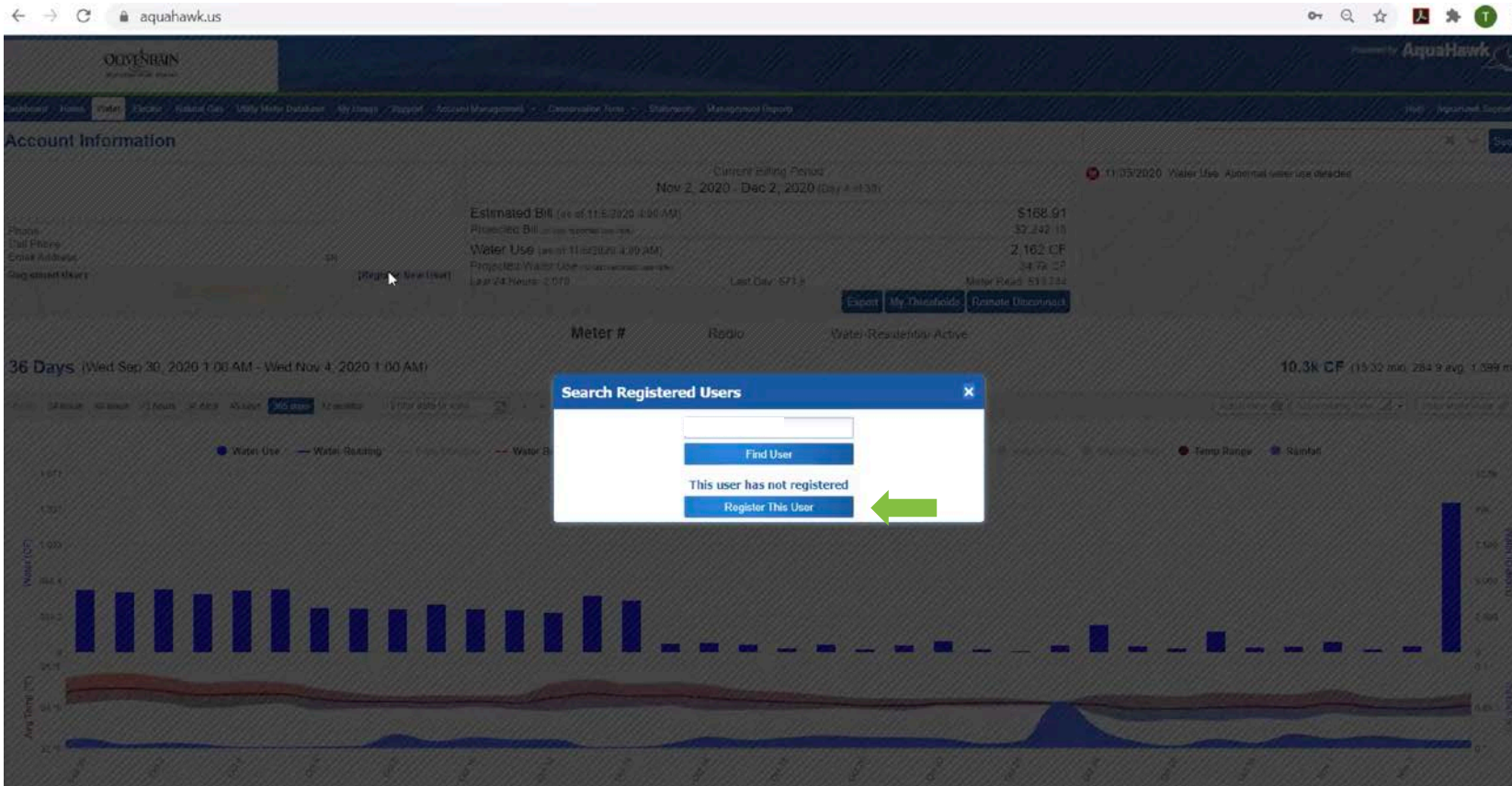


Some people choose to add additional user, such as another household member or irrigation specialist, to their account, so they can jointly view data and receive alerts.

STEP 1:
Click on "Register New User"



Register a new user



STEP 2:

Enter new email address,
“Register this User”



Register a new user

The screenshot displays the AquaHawk web application interface. A 'Register' modal form is centered on the screen, overlaying the 'Account Information' page. The form contains the following fields and options:

- *Email Address: [Text Input]
- *Confirm Email: [Text Input]
- Password: [Text Input] (Note: If you do not enter a password, a temporary one will be emailed to you.)
- Confirm Password: [Text Input]
- *First Name: [Text Input] (Value: Steph)
- *Last Name: [Text Input]
- *Phone: [Text Input] (Fields for Cell, Home, and Work numbers)
- *Mailing Address: [Text Input] (Fields for City, State, and Zip)
- Contact Preference: ☒ Email, ☐ Text Message, ☐ Cell Phone, ☐ Home Phone, ☐ Work Phone

A green arrow points to the 'Register' button at the bottom of the form. The background shows the 'Account Information' page with various charts and data, including a bar chart for '36 Days' and a line chart for 'Water Use'.

STEP 3:

Complete information.

Click register.



OLIVENHAIN
Municipal Water District

Have questions?

customerservice@olivenhain.com
760-753-6466



Municipal Water District



www.olivenhain.com