



**ADDENDUM NO. 1  
TO THE**

**GARDENDALE AND VILLAGE PARK WEST PRESSURE REDUCING STATION (PRS) REPLACEMENT PROJECT**

June 10, 2024

The following addendum shall be made part of the bidding opportunity. **The deadline for submitting pre-bid questions in writing is hereby extended to Friday, June 14, 2024 at 2:00 p.m. The deadline for submitting bid is hereby extended to 2:00 p.m. Tuesday, June 25, 2024 at 1966 Olivenhain Road, Encinitas, CA 92024.**

**ADDENDUM SECTION 1 – QUESTIONS**

1. Q: Has the District procured the EFI Pressure Reducing Stations and what is the expected delivery date?  
**A: District is currently procuring both EFI Pressure Reducing Stations. The units are expected to arrive prior to contractor mobilization. A schedule for the Owner furnished equipment will be provided at NTP.**
2. Q: What are the ramifications to the contractor if the Owner Furnished equipment does not arrive when anticipated?  
**A: The Owner will work with the contractor to mitigate any potential schedule impacts related to Owner furnished equipment.**
3. Q: What equipment components and services are included in the Owner Furnished EFI PRS vaults?  
**A: Manufacturer drawings are included in the Contract Documents. See excerpts from owner-furnished equipment proposal attached for additional details.**
4. Q: What is the minimum lead time required to request on-site startup services from EFI?  
**A: Contractor shall provide the Owner's Representative a minimum of 3 week notice for on-site startup services.**
5. Q: What is SDG&E's timeline for relocation of the existing gas line?  
**A: The existing gas line at the Gardendale site will be relocated by SDG&E and is anticipated to be completed prior to construction activities at that site.**
6. Q: What is the minimum offset the SDG&E relocation will be from existing pressure reducing station (PRS) that is called for demo on drawing C-2?  
**A: Contractor shall assume a minimum 5ft offset between the relocated gas line and existing PRS. Contractor shall field locate final alignment of the relocated gas line per C-2.**
7. Q: Is Flood coverage required? If yes, Flood for the full contract amount, or what limit is required for Flood?  
**A: Builder's Risk, which includes damage attributable directly or indirectly to flood, is required for the full contract amount per General Provisions 8-4 and Section 00810-1.13D.**

## **ADDENDUM SECTION 2 – DESIGN CLARIFICATIONS**

1. Please note the design change in the specified pipeline material. The pipeline material has been modified from Ductile Iron (DI) to Cement Mortar Lined and Coated (CML&C) pipe.
  - a. See drawing revisions included in Addendum 1.
  - b. Refer to OMWD Standard Specification 15601- Steel Transmission Pipe. All OMWD Reference Standard Specifications and Drawings are available for download from the District's website at [www.olivenhain.com](http://www.olivenhain.com).
  - c. In Specification 01010 Summary of Work and Specification 01150 Measurement and Payment, replace all references to Ductile Iron (DI) with Cement Mortar Lined and Coated (CML&C) pipe.
2. Based on recent work by the District at Wandering Rd, Contractor shall anticipate encountering groundwater immediately below grade at that site. See drawing revision included in Addendum 1.

## **ADDENDUM NO. 1 DRAWING REVISIONS**

1. Drawing G-2 General Notes; **REVISE** per attached Drawing
2. Drawing C-1 Village Park West PRS, Wandering Road 10" Waterline Improvements; **REVISE** per attached Drawing
3. Drawing C-2 Gardendale Road 14" Waterline Improvements; **REVISE** per attached Drawing
4. Drawing C-3 PRS Piping Profiles I; **REVISE** per attached Drawing
5. Drawing C-4 Curb Outlet Sections; **REVISE** per attached Drawing
6. Drawing C-5 PRS Piping Detail I; **REVISE** per attached Drawing
7. Drawing C-6 PRS Piping Detail II; **REVISE** per attached Drawing

## **ADDENDUM NO. 1 SPECIFICATION REVISIONS**

1. **DELETE** Project Specification 15601 in its entirety.  
**REPLACE** with OMWD Standard Specification 15601.
2. Specification 00810 – Special Provisions; **DELETE** Paragraph 1.34 in its entirety.

## **END OF ADDENDUM NO. 1**

### Attachments:

1. **REVISED** *Project at a Glance (provided for convenience)*
2. *Pre-bid Meeting Slides and Sign-In Sheet*
3. *Owner-Furnished Equipment Proposal (excerpt)*
4. **REVISED** Drawing G-2 General Notes
5. **REVISED** Drawing C-1 Village Park West PRS, Wandering Road 10" Waterline Improvements
6. **REVISED** Drawing C-2 Gardendale Road 14" Waterline Improvements
7. **REVISED** Drawing C-3 PRS Piping Profiles I
8. **REVISED** Drawing C-4 Curb Outlet Sections
9. **REVISED** Drawing C-5 PRS Piping Detail I
10. **REVISED** Drawing C-6 PRS Piping Detail II

APPROVED:



06/10/2024

---

Lindsey Stephenson, P.E.  
Engineering Manager, Olivenhain Municipal Water District



**PROJECT INFORMATION AT A GLANCE**  
**(REVISED VIA ADDENDUM 1)**

<b>Project Name</b>	Gardendale and Village Park West Pressure Reducing Station (PRS) Replacements Project
<b>Project Number</b>	D120104 & D120105
<b>Bid Issue Date</b>	Thursday, May 9, 2024
<b>Non-Mandatory Pre-Bid Conference Date</b>	Thursday, May 23, 2024 at 10:30 a.m.  Meet at OMWD Headquarters: 1966 Olivenhain Road, Encinitas, CA 92024
<b>Pre-Bid Questions Due</b>	In writing, no later than Friday, <b>June 14</b> , 2024 at 2:00 p.m. to <a href="mailto:prebid@olivenhain.com">prebid@olivenhain.com</a>
<b>Bid Due Date</b>	Tuesday, <b>June 25</b> , 2024 at 2:00 p.m. Bids due to OMWD Headquarters:  1966 Olivenhain Rd., Encinitas, CA 92024
<b>Project Estimate</b>	\$1.2M

Please note, this sheet is meant for informational purposes only. Please be sure to carefully read and review the contract documents prior to submitting your bid. The District reserves the rights to reject a bid if any information is found to be incomplete.

# PRE- BID MEETING

## Gardendale & Village Park West Pressure Reducing Station (PRS) Replacements Project (D120104 & D120105)

May 23, 2024



# Agenda

1

- Welcome and Introductions

2

- Site Overview

3

- Project Overview

4

- Special Provisions & Constraints

5

- Bid Checklist

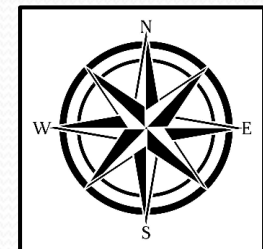
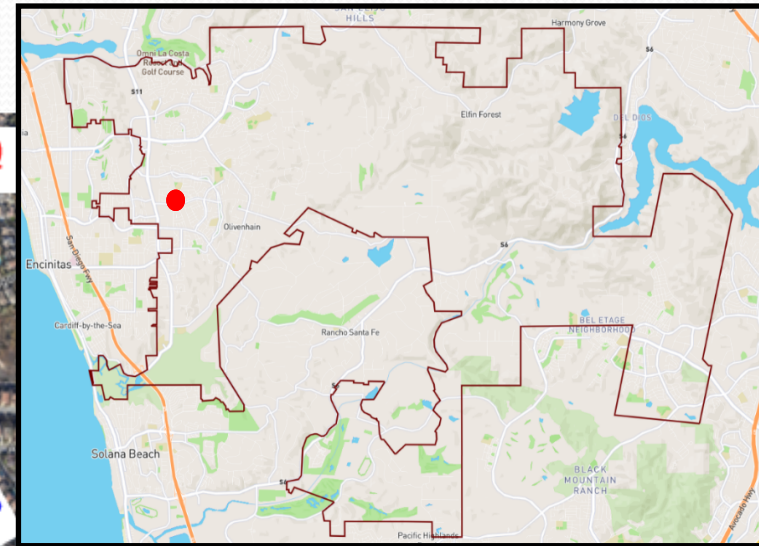
6

- Key Dates

# Welcome and Introductions

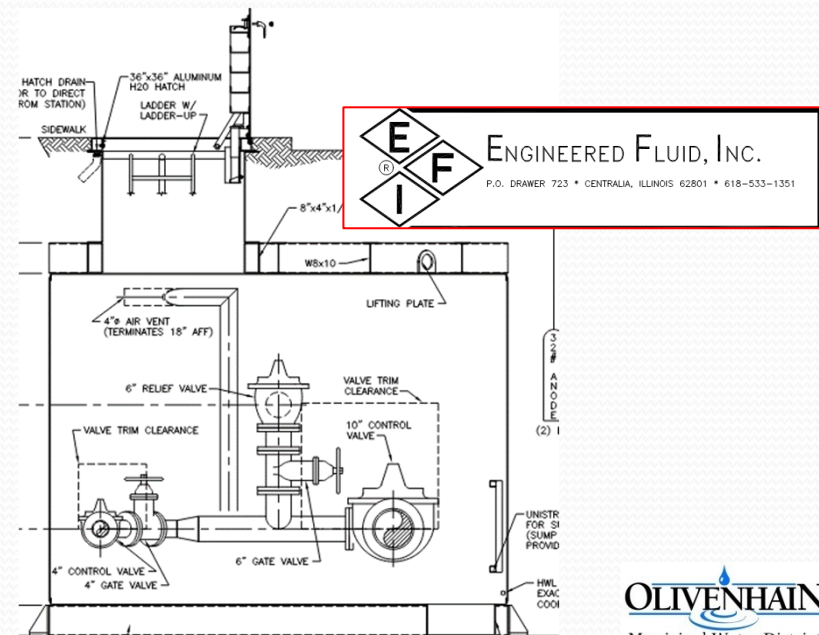
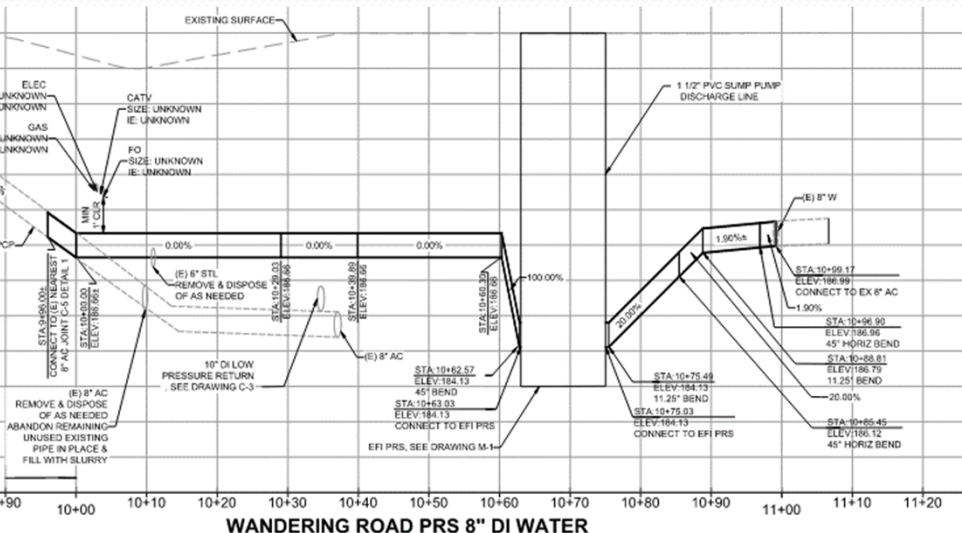
- Non-Mandatory Pre-Bid
- Sign-In Sheet
  - Attendees will be added to planholders' list
- OMWD Staff
  - Lindsey Stephenson, Engineering Manager
  - Steve Weddle, Engineering Supervisor
  - Marlo Reed, Inspector
  - Andrea Scott, Engineering Technician III
  - Diana Spencer, Engineering Department Assistant
- Design Engineer : Balboa Engineering (not in attendance)
- Construction Manager: Valley CM (not in attendance)

# Vicinity Site Map



this project will consist of the construction of: approximately 235 6-, 8-, 10- and 14-inch diameter ductile iron pipe (DI) for water service and appurtenances and connections to existing systems; cathodic protection systems; the abandonment/demolition of two old PRS stations; installation of two Owner furnished EFI PRS units, landscape; site restoration and reconstruction of existing pavements, curbs, curb, and sidewalks, striping and markings, curb ramps, and signs damaged during construction or ordered for replacement; and all work necessary for a complete and operable distribution piping system in accordance with the Contract Documents.

REFER TO DWGS AND SECTION 01010 –  
SUMMARY OF WORK FOR DETAILS



# Special Provisions & Constraints

The Contractor's license classification required for this project is a California State Contractor's License A – General Engineering.

Bidders shall have successfully completed a minimum of five (5) similar projects during the last eight (8) years performing the type and value of work required by this contract on public potable water distribution systems, of which at least two (2) must include Pressure Reducing Stations.

Hours of work shall be 7:30 A.M. to 5:00 P.M. unless otherwise specified in writing and agreed to by the District. **Absolutely no equipment shall be started or warmed up prior to 7:30 AM or after 5:00 PM.**

The work shall be completed within **THREE HUNDRED FORTY (340) CONSECUTIVE CALENDAR DAYS** from and after the date of the Notice to Proceed.

delayed beyond the time allowed shall be at the rate of \$2,000.00 per day,

**Insurance Requirements:** Employer's Liability, General Liability, Auto Liability, and Builder's Risk. **Earthquake and Tidal Wave Insurance NOT required.**

**California Prevailing Wage Rates apply**

# Special Provisions & Constraints (cont.)

## **DISTRICT FURNISHED EQUIPMENT**

The District will furnish two (2) – Pressure Reducing Stations (PRS) manufactured by Engineered Fluid Inc (EFI). The District will provide the contractor with final shop drawings.

All water services shall remain in service for the duration of construction except when performing reconnections and tie-ins. Only one PRS may be taken out of service at a time. For work in Gardendale Rd, the existing Gardendale PRS may only be out of service between October 1<sup>st</sup> through April 30<sup>th</sup>, unless otherwise approved by Owner. The maximum allowable shutdown duration for each PRS shall be 7 consecutive weeks.

The Contractor shall give the Owner a minimum of fourteen (14) calendar days' notice prior to any proposed excavation or shutdown of existing mains or services. Scheduling shall be subject to Owner approval.

# Bid Checklist

## BID FORM CHECKLIST

(To be placed in the Bidder's Contract Documents in front of the Table of Contents)

Bid Form Page	Requirement	Initial
1 of 15	<b>BID FORM</b> - Fill out the form and acknowledge <u>all</u> addenda in the spaces provided at the end of the first paragraph	
2 of 15	<b>BIDDING INSTRUCTIONS</b> - Examination of the site and review of the Contract Documents has been completed	
2 of 15	<b>BIDDING INSTRUCTIONS</b> - Bid Schedule and all Bid forms are to be submitted with this Bid Form Checklist	
4-5 of 15	<b>BID SCHEDULES</b> - Fill out all items in the Bid Schedules, including dollar amounts in words and in numbers for each item	
6 of 15	<b>DESIGNATION OF SUBCONTRACTORS</b> - Fill in all information required on the form	
7 of 15	<b>LISTING OF MANUFACTURERS</b> - Fill in all information required on the form	
8 of 15	Fill in the type of Bid Bond enclosed in the first paragraph, and list all principals of the company in the third paragraph	
9 of 15	Fill in Bidder's license classification, license number, and all other information required in the fourth paragraph, including signature and date	
10 of 15	<b>CERTIFICATE OF DRUG-FREE WORKPLACE</b> - Fill in Bidder's name at the top and Certification section at the bottom of the page, including signature and date	
11 of 15	<b>CERTIFICATE OF NONDISCRIMINATION</b> - Fill in all information required on the form, including signature and date	
12 of 15	<b>NONCOLLUSION AFFIDAVIT</b> - Fill in all information required on the form including signature and date and provide notarization	
13-14 of 15	<b>BIDDER'S EXPERIENCE</b> - Fill in all information required on the form and provide signature and date at the bottom.	
15 of 15	<b>INSURANCE ACKNOWLEDGEMENT</b> - Fill in all information required on the form and provide signature and date where indicated	
1 of 2	<b>BID BOND</b> - Fill in all required information including dollar amount	
2 of 2	<b>BID BOND</b> - Fill in all required information, provide signatures of the bidder and surety where indicated, provide notarization for principal of bidder and surety, and attach a certified Power of Attorney for surety	
Bid Notice 2 of 4	<b>MARKING AND ADDRESSING BID ENVELOPE</b> - Contract Documents are sealed in an envelope marked and addressed as required in this section	

# Project at a Glance - Key Deadlines

<b>Project Name</b>	Gardendale and Village Park West Pressure Reducing Station (PRS) Replacements Project
<b>Project Number</b>	D120104 & D120105
<b>Bid Issue Date</b>	Thursday, May 9, 2024
<b>Non-Mandatory Pre-Bid Conference Date</b>	Thursday, May 23, 2024 at 10:30 a.m.  Meet at OMWD Headquarters: 1966 Olivenhain Road, Encinitas, CA 92024
<b>Pre-Bid Questions Due</b>	In writing, no later than Friday, May 31, 2024 at 2:00 p.m. to <a href="mailto:prebid@olivenhain.com">prebid@olivenhain.com</a>
<b>Bid Due Date</b>	Tuesday, June 11, 2024 at 2:00 p.m. Bids due to OMWD Headquarters:  1966 Olivenhain Rd., Encinitas, CA 92024
<b>Project Estimate</b>	\$1.2M

Pre-bid slides and sign-in sheet will be posted to OMWD website

Addenda will be disseminated to plan holders list and posted to OMWD website. Email [prebid@olivenhain.com](mailto:prebid@olivenhain.com) to be added to plan holders list.

**Gardendale and Village Park PRS Station Replacment Project (D120104 D120105)**  
**Plan Holders List**

[illegible]



P.O. Box 723 ♦ 1221 N. Elm St., Centralia, IL 62801 ♦ (618) 533-1351 ♦ FAX (618) 533-1459

**DATE ISSUED:** May 1, 2024

**PROJECT LOC.:** Encinitas, CA

**PROJECT TITLE:** Gardendale Road & Village Park West Pressure Reducing Stations

**TO:** Olivenhain Municipal Water District  
Encinitas, CA

**ENGINEER:** Balboa Engineering, Inc.  
Matt Dorman, P.E.

---

## EQUIPMENT PROPOSAL

EFI-Solutions proposes to manufacture, factory test, deliver, and commission two (2) Factory-Built, Below Ground, Pressure Reducing Stations complete. The stations will include the following major equipment components and services as described:

### Gardendale Road PRS - EFI #95198-01

- Size 10'-0" diameter by 7'-3" inside height steel capsule, designed for H-20 loading and mounted on a steel skid;
- One (1) Bilco MJ4AL-H20 (36"x36") single-leaf access hatch with concealed lockable hasp, 1-1/2" drain coupling, aluminum ladder and LU-1 ladder-up safety post;
- Size 10" diameter, Class 150 flanged main inlet and outlet pipe connections;
- Size 6" diameter, Class 150 flanged relief outlet pipe connection;
- All schedule 40 steel piping will be interior coated with fusion-bonded epoxy and exterior coated with Sherwin Williams Macropoxy 646 two (2) part epoxy paint;
- Two (2) size 10" American Flow Control AFC series 2500 gate valves with handwheel operators;
- One (1) size 6" American Flow Control AFC series 2500 gate valves with handwheel operators;
- Two (2) size 4" American Flow Control AFC series 2500 gate valves with handwheel operators;
- One (1) size 10" Cla-Val 90G-01BCSVYKCKX-SST&F pressure reducing valve;
- One (1) size 4" Cla-Val 90G-01BCSVYKCKX-SST&F pressure reducing valve;
  - Both valves equipped with the following:
    - Class 150# flanged ends, ductile iron body, globe pattern
    - KC = Epoxy coated interior & exterior
    - Stainless Steel internal trim, Bronze Pilot, Stainless Steel Trim Tubing and Fittings
    - Isolation Valves, Open/Close CV Flow Control, Y-Strainer
    - 30-300 PSI Spring Ranged CRD Pilot
    - X101 Position Indicator
    - KX = 12 Mil Epoxy Coated & Holiday-Free Tested
- One (1) size 6" Cla-Val 50A-01BKCKDKX-SST&F-X105 LCW pressure relief valve;
  - Class 150# flanged ends, ductile iron body, angle pattern
  - KC = Epoxy coated interior & exterior
  - Stainless Steel internal trim, KD=Dura-Kleen Stem, Bronze Pilot, Stainless Steel Trim Tubing and Fittings
  - Isolation Valves
  - 20-200 PSI Spring Ranged CRL Pilot
  - X105 LCW Limit Switch Assembly
  - KX = 12 Mil Epoxy Coated & Holiday-Free Tested

# EXCERPTS FROM OMWD/EFI PROPOSAL (PROVIDED VIA ADDENDUM 1)

Issued: May 1, 2024

- 18" diameter x 8" deep sump hole, two (2) 1" diameter ball valves for sump supply/return and uni-strut hardware installed by EFI-Solutions (OMWD to install district's sump pump materials in-the-field)
- One (1) ¾" Hose Bib Assembly, includes ball valve, PRV and hose thread connection adapter;
- One (1) WIKA 232.34, 4.5" pressure gauge, wall mounted(Outlet Side Only);
- Two (2) ½" gauge/transmitter taps with ½" ball valve;
- One (1) E/H Outlet Pressure transmitter(Outlet Side Only);
- One (1) Piece of NEMA 4X Wireway 8" x 8" x 36" for Two 1 ½" Conduit tank entrances;
- One (1) NEMA 4X Interface/Junction Panel;
- One (1) High Water Level Alarm flood switch;
- One (1) Intrusion Alarm mounted in hatch;
- Interior conduit to be schedule 40 PVC. NEMA 1 wireway as needed;
- Station wire to be copper THHN/THWN-2
- Unistrut to be Fiberglass
- Pipe flange fittings supplied with fluoropolymer coated stud bolts, nuts & washers;
- All assembled and tested in a steel skid-mounted capsule with high-performance polyurea spray elastomer coating on 100% interior floor, sump hole, ceiling, walls, and 100% exterior vault structural surfaces;
- Four (4) 32-lb. magnesium anode packs, lead lines, two (2) concrete test station, shunts, wire & hardware shipped loose for contractor installation;
- One complete Engineering Submittal;
- One (1) lot Operation & Maintenance Manuals with Parts List;

Size: 10'-0" diameter x 7'-3" inside height

Estimated Weight: 9,500 #

## **Village Park West PRS -EFI #95198-02**

- Size 10'-0" diameter by 7'-3" inside height steel capsule, designed for H-20 loading and mounted on a steel skid;
- One (1) Bilco MJ4AL-H20 (36"x36") single-leaf access hatch with concealed lockable hasp, 1-1/2" drain coupling, aluminum ladder and LU-1 ladder-up safety post;
- Size 8" diameter, Class 150 flanged main inlet and outlet pipe connections;
- Size 6" diameter, Class 150 flanged relief outlet pipe connection;
- All schedule 40 steel piping will be interior coated with fusion-bonded epoxy and exterior coated with Sherwin Williams Macropoxy 646 two (2) part epoxy paint;
- Two (2) size 8" American Flow Control AFC series 2500 gate valves with handwheel operators;
- One (1) size 6" American Flow Control AFC series 2500 gate valves with handwheel operators;
- Two (2) size 4" American Flow Control AFC series 2500 gate valves with handwheel operators;
- One (1) size 8" Cla-Val 90G-01BCSVYKCKX-SST&F pressure reducing valve;
- One (1) size 4" Cla-Val 90G-01BCSVYKCKX-SST&F pressure reducing valve;
  - **Both valves equipped with the following:**
    - Class 150# flanged ends, ductile iron body, globe pattern
    - KC = Epoxy coated interior & exterior
    - Stainless Steel internal trim, Bronze Pilot, Stainless Steel Trim Tubing and Fittings
    - Isolation Valves, Open/Close CV Flow Control, Y-Strainer

**EXCERPTS FROM OMWD/EFI PROPOSAL  
(PROVIDED VIA ADDENDUM 1)**

Issued: May 1, 2024

- 30-300 PSI Spring Ranged CRD Pilot
  - V = X101 Position Indicator
  - KX = 12 Mil Epoxy Coated & Holiday-Free Tested
- One (1) size 6" Cla-Val 50A-01BVKCKDKX-SST&F-X101 pressure relief valve;
  - Class 150# flanged ends, ductile iron body, angle pattern
  - KC = Epoxy coated interior & exterior
  - Stainless Steel internal trim, KD=Dura-Kleen Stem, Bronze Pilot, Stainless Steel Trim Tubing and Fittings
  - Isolation Valves
  - 20-200 PSI Spring Ranged CRL Pilot
  - V = X101 Position Indicator
  - KX = 12 Mil Epoxy Coated & Holiday-Free Tested
- 18" diameter x 8" deep sump hole, two (2) 1" diameter ball valves for sump supply/return and uni-strut hardware installed by EFI-Solutions (OMWD to install district's sump pump materials in-the-field)
- One (1) ¾" Hose Bib Assembly, includes ball valve, PRV and hose thread connection adapter;
- Two (2) ½" gauge taps with ½" ball valve;
- Unistrut to be Fiberglass
- Pipe flange fittings supplied with fluoropolymer coated stud bolts, nuts & washers;
- All assembled and tested in a steel skid-mounted capsule with high-performance polyurea spray elastomer coating on 100% interior floor, sump hole, ceiling, walls, and 100% exterior vault structural surfaces;
- Four (4) 32-lb. magnesium anode packs, lead lines, two (2) concrete test station, shunts, wire & hardware shipped loose for contractor installation;
- One complete Engineering Submittals;
- One (1) lot Operation & Maintenance Manuals with Parts List;

Size: 10'-0" diameter x 7'-3" inside height

Estimated Weight: 9,500 #

GENERAL NOTES

1. APPLICABLE LAWS:

CONTRACTOR SHALL COMPLY WITH ALL APPLICABLE GOVERNMENTAL AND LOCAL LAWS, REGULATIONS, AND ORDINANCES WITH REGARD TO TRAFFIC SAFETY, WORK HOURS, OPERATING HOURS, NOISE AND AIR POLLUTION, AND SANITARY CONDITIONS.

2. DIMENSIONS AND ELEVATIONS:

LOCATION, DIMENSION, AND ELEVATION OF IMPROVEMENTS TO BE MET BY WORK OF THIS CONTRACT SHALL BE CONFIRMED BY FIELD MEASUREMENTS PRIOR TO CONSTRUCTION OF NEW WORK OR PROCUREMENT. ALL DISCREPANCIES SHALL BE REPORTED TO THE DISTRICT'S REPRESENTATIVE WITHIN 48 HOURS.

3. SAFETY:

A. CONTRACTOR SHALL ASSUME SOLE AND COMPLETE RESPONSIBILITY FOR JOB SITE CONDITIONS DURING THE COURSE OF CONSTRUCTION INCLUDING SAFETY OF ALL PERSONS AND PROPERTY. THIS REQUIREMENT IS NOT LIMITED TO NORMAL WORKING HOURS. THE CONTRACTOR SHALL DEFEND, INDEMNIFY, AND HOLD THE DISTRICT AND THE ENGINEER HARMLESS FROM ANY AND ALL LIABILITY, REAL OR ALLEGED IN CONNECTION WITH THE PERFORMANCE OF THIS WORK, EXCEPTING LIABILITY ARISING FROM THE SOLE NEGLIGENCE OF THE DISTRICT OR THE ENGINEER.

B. CONTRACTOR SHALL COMPLY WITH ALL REQUIREMENTS OF LOCAL, CITY, STATE, AND FEDERAL REGULATIONS CONCERNING CONFINED SPACE ENTRY.

4. JOB-SITE CONDITIONS:

A. UPON COMPLETION OF EACH DAY'S WORK, THE CONTRACTOR SHALL BE RESPONSIBLE FOR LEAVING THE WORK AREA SECURE AND FREE OF HAZARDS. THE CONTRACTOR SHALL PROVIDE NECESSARY TEMPORARY SIGNS, WARNING DEVICES, AND BARRICADES. TEMPORARY ACCESS SHALL BE PROVIDED TO ALL ADJACENT ACTIVITIES DURING NON-CONSTRUCTION HOURS.

B. THE EXISTING FACILITIES MUST REMAIN IN OPERATION FOR THE DURATION OF THE WORK. THE CONTRACTOR SHALL COORDINATE ALL ON-SITE ACTIVITIES WITH THE DISTRICT'S OPERATIONS STAFF. ACCESS SHALL BE PROVIDED FOR OPERATIONS AND MAINTENANCE PURPOSES. CONTRACTOR SHALL REFER TO SPECIFICATION SECTION 01043 FOR CONSTRUCTION SEQUENCING AND MAINTENANCE OF OPERATION.

C. THE CONTRACTOR SHALL PROTECT ALL EXPOSED AREAS OF THE SITE DURING THE CONSTRUCTION PERIOD AGAINST DAMAGE. ANY AND ALL SITE DAMAGE FROM THE CONTRACTOR'S ACTIVITIES SHALL BE REPAIRED BY THE CONTRACTOR AS DIRECTED BY THE DISTRICT.

D. CONTRACTOR SHALL PROVIDE MINIMUM 14-DAYS NOTICE TO THE OWNERS PROJECT MANAGER FOR ANY TIE-INS OR SHUT-DOWNS REQUIRED FOR EXECUTION OF WORK.

E. CONTRACTOR SHALL NOT BLOCK OR IMPEDE ACCESS TO OTHERS ALONG ACCESS PATH WITHOUT DISTRICT APPROVAL.

F. ELEVATIONS SHOWN THROUGHOUT DRAWINGS MATCH RECORD DRAWING INFORMATION. ACTUAL ELEVATIONS AND DIMENSIONS SHALL BE CONFIRMED AS NECESSARY BY THE CONTRACTOR.

5. AS-BUILT DRAWINGS:

A. THE CONTRACTOR SHALL MAINTAIN CURRENT BLACKLINE DRAWINGS DURING CONSTRUCTION NEATLY MARKED IN RED INK TO REFLECT THE AS-BUILT CONDITIONS. CONTRACTOR SHALL MAKE UPDATES TO THE AS-BUILT DRAWINGS ON A DAILY BASIS. AS-BUILT DOCUMENTS SHALL BE MAINTAINED ON SITE AT ALL TIMES.

B. AS-BUILT DRAWINGS SHALL INCLUDE ANY DEVIATION FROM PLANS INCLUDING PIPELINE LINE AND GRADE AND SUB-GRADE UTILITY LOCATIONS AND SIZE.

C. CURRENT AS-BUILT DRAWINGS SHALL BE A CONDITION OF MONTHLY PROGRESS PAYMENT. CONTRACTOR SHALL REVIEW AS-BUILT DRAWINGS WITH THE DISTRICT PRIOR TO SUBMITTING PROGRESS PAYMENT REQUEST.

D. AS-BUILT DRAWINGS SHALL BE SUBMITTED TO THE DISTRICT FOR APPROVAL PRIOR TO RELEASE OF RETENTION.

ABBREVIATIONS

ABAND	ABANDONED	OMWD	OLIVENHAIN MUNICIPAL WATER DISTRICT
ACP	ASBESTOS CONCRETE PIPE	PE	PLAIN END
AML	APPROVED MATERIALS LIST	POC	POINT OF CONNECTION
AVAR	COMBINATION AIR VALVE AND AIR RELEASE	PPM	PARTS PER MILLION
		PROP	PROPOSED
BC	BEGIN CURVE	PS	PUMP STATION
BLVD	BOULEVARD	PVC	POLYVINYL CHLORIDE
BO	BLOWOFF	RCP	REINFORCED CONCRETE PIPE
BOT	BOTTOM	RD	ROAD
CATV	CABLE TV	ROW, R/W	RIGHT OF WAY
CAV	COMBINATION AIR VALVE	RW	RECYCLED WATER
CL	CENTERLINE	S	SLOPE
CONC	CONCRETE	SCH	SCHEDULE
DIA	DIAMETER	SD	STORM DRAIN
DI	DUCTILE IRON	STA	STATION
DIP	DUCTILE IRON PIPE	STD	STANDARD
DLB	DOUBLE	STL	STEEL
DR	DIMENSION RATIO	TEMP	TEMPORARY
DTL	DETAIL	TELE	TELEPHONE LINE
DWG	DRAWING	TOP	TOP OF PIPE
EC	END OF CURVE	TS	TRAFFIC SIGNAL
ELEC	ELECTRICAL	TYP	TYPICAL
ELEV, EL	ELEVATION	UNK	UNKNOWN
EX	EXISTING	UT	UTILITY
(E)	EXISTING	VERT	VERTICAL
FH	FIRE HYDRANT	VCP	VITRIFIED CLAY PIPE
FO	FIBER OPTIC	W	WEST
FS	FINISHED SURFACE	WM	WATER METER
GV	GATE VALVE		
GR	GRADE		
HGL	HYDRAULIC GRADE LINE		
HORIZ	HORIZONTAL		
IE	INVERT ELEVATION		
MIN	MINIMUM		
MH	MANHOLE		
MFR	MANUFACTURER		
N	NORTH		
NO	NUMBER		

CML&C  
CTF

CEMENT MORTAR LINED AND COATED STEEL PIPE  
CUT TO FIT

OWMD GENERAL POTABLE WATER SYSTEM NOTES

- POTABLE WATER WORKS SHALL BE CONSTRUCTED IN ACCORDANCE WITH THE DETAILS AND MATERIALS AS SPECIFIED IN THE MOST RECENT EDITION OF THE OLIVENHAIN MUNICIPAL WATER DISTRICT (DISTRICT) STANDARD SPECIFICATIONS AND DRAWINGS FOR THE CONSTRUCTION OF WATER MAINS AND FACILITIES, INCLUDING ALL AMENDMENTS ADOPTED PRIOR TO THE DISTRICT APPROVAL DATE ON THESE PLANS. CONTRACTOR SHALL HAVE A COPY OF THE STANDARD SPECIFICATIONS ON THE JOB SITE AT ALL TIMES.
- THE SUBMISSION AND REVIEW OF ALL SUBMITTALS (SHOP DRAWINGS, SIX SETS) AS REQUIRED BY THE STANDARD SPECIFICATIONS ARE TO BE ACCOMPLISHED PRIOR TO THE PRE-CONSTRUCTION MEETING WITH THE DISTRICT'S INSPECTOR.
- UNLESS OTHERWISE NOTED, CONNECTIONS TO EXISTING MAINS SHALL BE MADE DRY. THE TIME AND DURATION OF ANY SHUTDOWNS OF EXISTING MAINS SHALL BE SUBJECT TO APPROVAL BY THE DISTRICT. DISTRICT SHALL BE NOTIFIED TWO WEEKS MINIMUM IN ADVANCE OF ANY SHUTDOWN.
- CONTRACTOR SHALL COORDINATE WITH DISTRICT ALL ARRANGEMENTS FOR HIGH-LINING TEMPORARY SERVICES PRIOR TO SHUTDOWNS. NO SHUTDOWNS WILL BE SCHEDULED ON A MONDAY OR FRIDAY.
- CONTRACTOR SHALL REVIEW ALL PROPOSED TRENCH WORK WITH CAL/OSHA. A COPY OF EXEMPTION LETTER OR TRENCHING PERMIT, IF REQUIRED, SHALL BE SUBMITTED TO THE DISTRICT PRIOR TO CONSTRUCTION.
- NO WORK MAY BEGIN OR PROCEED WITHOUT DIRECTION OF DISTRICT'S INSPECTOR. CONTRACTOR SHALL NOTIFY THE DISTRICT INSPECTIONS DEPARTMENT 48 HOURS PRIOR TO THE BEGINNING OF WORK TO ARRANGE FOR INSPECTION OF THE PROJECT.
- THE CONTRACTOR MUST CALL "DIG ALERT OF SOUTHERN CALIFORNIA" TO HAVE UNDERGROUND SERVICE UTILITIES LOCATED PRIOR TO CONSTRUCTION. THIS CALL WILL BE MADE AT LEAST 48 HOURS IN ADVANCE PRIOR TO ANY WORK BEING PERFORMED IN PUBLIC RIGHT-OF-WAY. (DIG ALERT PHONE: 800-227-2600)
- ALL EXISTING FACILITIES WHICH MAY AFFECT PROJECT CONSTRUCTION, I.E., LINE CROSSINGS, LINE PARALLELING, OR PROPOSED CONNECTIONS SHALL BE FIELD VERIFIED BEFORE ANY CONSTRUCTION BEGINS.
- THE CONTRACTOR SHALL FURNISH AND INSTALL PER THE STANDARD SPECIFICATIONS THE APPROPRIATE BURIED UTILITY WARNING AND IDENTIFICATION TAPE ABOVE ALL PUBLIC WATER LINES INCLUDING WATER LATERALS LOCATED IN PUBLIC RIGHT-OF-WAY.
- WHERE ELEVATIONS AND GRADES ARE NOT SHOWN ON THE WATER MAIN PROFILE, TOP OF PIPE PROFILE IS 48-INCHES BELOW CENTERLINE OF FINISH GRADE OF STREET.
- ALL DEFLECTIONS (HORIZONTAL AND VERTICAL) SHALL BE MADE BY USE OF JOINT COUPLINGS WITH 4" MAXIMUM DEFLECTION PER COUPLING (2" PER JOINT). NO BENDING (CURVING) OF PIPE SHALL BE PERMITTED.
- INSTALL A MINIMUM 1-INCH WATER SERVICE TO EACH LOT. METER TO BE LOCATED 5-FEET FROM A SIDE LOT LINE. A 3/4-INCH HIGH LETTER "W" SHALL BE CHISELED IN TOP OF EXISTING CURB OR IMPRINTED IN NEW CURB AT ALL WATER SERVICE CROSSINGS.
- METER BOXES SHALL NOT BE PLACED WITHIN DRIVEWAYS OR SIDEWALKS WITHOUT THE DISTRICT'S PRIOR WRITTEN CONSENT.
- ALL WATER SERVICES FOR IRRIGATION, MULTIPLE RESIDENTIAL COMPLEXES, COMMERCIAL OR INDUSTRIAL DEVELOPMENT SHALL HAVE APPROVED BACKFLOW PREVENTION DEVICE ON CUSTOMER'S SIDE OF WATER METER.
- CONTRACTOR SHALL TIE OFF ALL VALVE LOCATIONS AND PROVIDE WRITTEN DIMENSIONS TO INSPECTOR IMMEDIATELY UPON INSTALLATION OF VALVES.
- LINE VALVES, WHERE REQUIRED AT STREET INTERSECTIONS SHALL BE LOCATED AT THE TEE WHENEVER POSSIBLE.
- FIRE HYDRANTS, AS APPROVED BY THE APPROPRIATE FIRE DISTRICT AND MEETING THE DISTRICT'S STANDARD SPECIFICATIONS, ARE TO BE INSTALLED AT LOCATIONS SPECIFIED BY THE FIRE DISTRICT.
- ALL DESIGN CHANGES TO THE WATER SYSTEM SHALL BE APPROVED BY THE DISTRICT REPRESENTATIVE IN WRITING PRIOR TO CONSTRUCTION AND ACCEPTANCE OF THE CHANGE.
- THE WATER SYSTEM SHALL BE PRESSURE TESTED IN ACCORDANCE WITH THE PROCEDURES IN THE OMWD STANDARD SPECIFICATIONS. THE CLASS OF PIPE SHALL BE USED AS THE DESIGNATED WORKING PRESSURE FOR TESTING ALL PIPE, VALVES (CLOSED) AND APPURTENANCES.
- PIPELINES AND APPURTENANCES SHALL BE DISINFECTED IN ACCORDANCE WITH SECTION 15141 OF THE OMWD STANDARD SPECIFICATIONS PRIOR TO TIE-IN OR CONNECTION TO EXISTING SYSTEM FACILITIES. BACTERIOLOGIC QUALITY TEST RESULTS SHALL CONFORM TO THE CRITERIA SPECIFIED IN THAT SPECIFICATION.
- CONTRACT RECORD DRAWINGS MUST BE SUBMITTED PRIOR TO FINAL ACCEPTANCE OF WORK. THE PLANS MUST PROVIDE POST CONSTRUCTION VERIFICATION OF THE LOCATION AND ELEVATION OF PIPES AND APPURTENANCES.
- CONTRACTOR SHALL GUARANTEE ALL WORK FOR A PERIOD OF TWO (2) YEARS AFTER THE DATE OF ACCEPTANCE FOR THE PROJECT. CONTRACTOR SHALL REPAIR OR REPLACE ANY OR ALL SUCH WORK, TOGETHER WITH ANY OTHER WORK WHICH MAY BE DISPLACED IN SO DOING THAT MAY PROVE DEFECTIVE IN WORKMANSHIP AND/OR MATERIALS WITHIN THE TWO-YEAR PERIOD FROM THE DATE OF ACCEPTANCE WITHOUT EXPENSE WHATSOEVER TO THE DISTRICT, ORDINARY WEAR AND TEAR, UNUSUAL ABUSE OR NEGLIGENCE EXCEPTED.
- ALL IRRIGATION METERS SHALL BE SERVED WITH RECYCLED WATER UNLESS PREVIOUSLY APPROVED IN WRITING BY THE DISTRICT.
- ALL BURIED FITTINGS AND VALVES SHALL BE WAX TAPE WRAPPED IN ACCORDANCE WITH OMWD STANDARD SPECIFICATIONS. SECTIONS 09952 AND 15310 AND STANDARD DETAIL G-6.
- NO CONCRETE THRUST BLOCKS ARE ALLOWED ON VERTICAL BENDS. VERTICAL BENDS REQUIRE DR14 PIPE AND RESTRAINED JOINTS.

SHEET INDEX

SHEET	DWG	TITLE
1	G-1	TITLE SHEET
2	G-2	GENERAL NOTES, SHEET INDEX, AND ABBREVIATIONS
3	G-3	GENERAL NOTES
4	C-1	VILLAGE PARK WEST PRS, WANDERING ROAD 10" WATERLINE IMPROVEMENTS
5	C-2	GARDENDALE ROAD 14" WATERLINE IMPROVEMENTS
6	C-3	PRS PIPING PROFILES I
7	C-4	CURB OUTLET SECTIONS
8	C-5	PRS PIPING DETAILS I
9	C-6	PRS PIPING DETAILS II
10	S-1	GENERAL STRUCTURAL NOTES
11	S-2	PRS FOUNDATION PLAN & SECTION
12	E-1	GARDENDALE ROAD ELECTRICAL LEGEND AND SYMBOL
13	E-2	GARDENDALE ROAD ELECTRICAL SITE PLAN
14	E-3	GARDENDALE ROAD ELECTRICAL DETAILS
15	I-1	GARDENDALE ROAD INSTRUMENTATION LEGEND AND SYMBOL
16	I-2	GARDENDALE ROAD INSTRUMENTATION P&ID
17	M-1	VILLAGE PARK WEST PRS ON WANDERING ROAD, PRS EXTERIOR & EXTERIOR PLAN (EFI)
18	M-2	WANDERING RD, VILLAGE PARK WEST PRS, PRS SKID & FOUNDATION PLAN (EFI)
19	M-3	GARDENDALE ROAD PRS EXTERIOR & EXTERIOR PLAN (EFI)
20	M-4	GARDENDALE ROAD PRS SKID & FOUNDATION PLAN (EFI)
21	CP-1	WANDERING ROAD, VILLAGE PARK WEST PRS ANODE PROTECTION DETAIL
22	CP-2	GARDENDALE ROAD PRS ANODE PROTECTION DETAIL

CONTRACTOR TO SEE REDLINE CHANGES  
THROUGHOUT.

\*OF SPECIAL NOTE, ALL DUCTILE IRON PIPING HAS  
BEEN CHANGE TO CML&C; SHOP DRAWINGS  
REQUIRED FOR SUBMITTAL PER OMWD STANDARD  
SPEC 15061.

LEGEND

	PROPOSED PIPE		SEWER MANHOLE
	BLOWOFF VALVE		STORM DRAIN MANHOLE
	AIR VALVE AND AIR RELEASE (AVAR)		STREET LIGHT
	FIRE HYDRANT		GEOTECHNICAL BORING
	REDUCER		SURVEY MONUMENT
	GATE VALVE		
	CITY OF ENCINITAS TREES		
	EXISTING WATER VALVE		
	EXISTING FIRE HYDRANT		
	EXISTING STORM DRAIN		
	EXISTING WATER		
	EXISTING GAS DISTRIBUTION MAIN		
	EXISTING BURIED ELECTRIC		
	EXISTING ELECTRIC		
	EXISTING OVERHEAD ELECTRIC		
	EXISTING FIBER OPTIC		
	EXISTING TELECOMMUNICATIONS LINE		
	EXISTING CATV		
	EXISTING PIPE LARGER THAN 14"		
	EXISTING PRS RELIEF PIPELINE		
	EXISTING SEWER		



DESIGN

DRAWN

CHECK

DATE

BY

8/7/24

MJD

ADDITION 1

REVISIONS

BALBOA

ENGINEERING, INC.

OLIVENHAIN

Municipal Water District  
1966 Olivenhain Road  
Encinitas, CA 92024 (760)753-6466

GARDENDALE AND VILLAGE PARK WEST  
PRS REPLACEMENTS

GENERAL NOTES, SHEET  
INDEX, AND ABBREVIATIONS

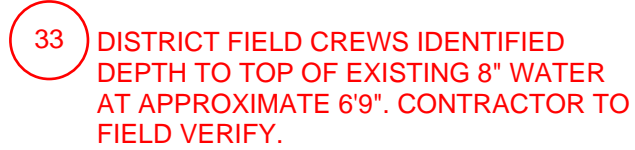
SHEET

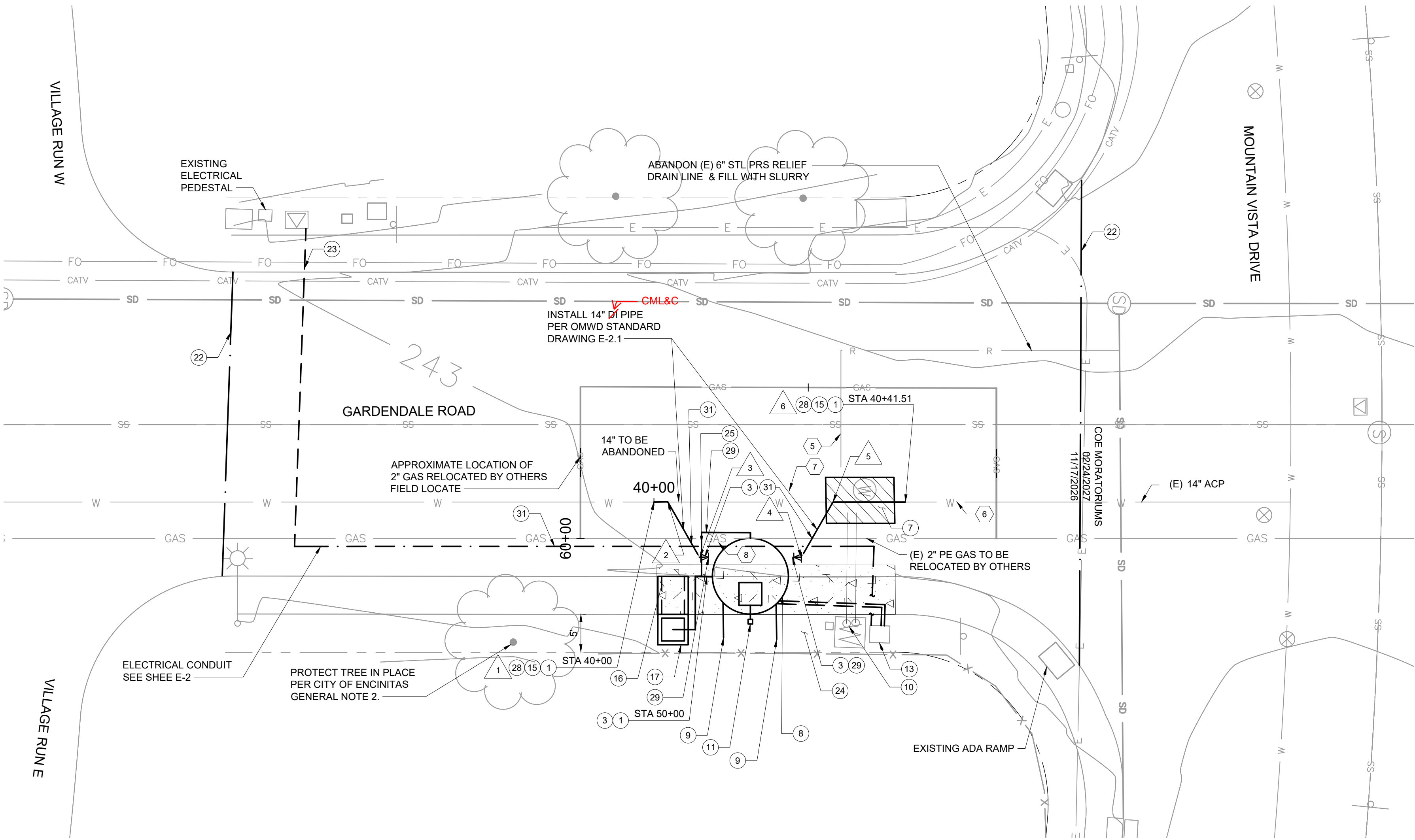
DRAWING

2 OF 22

G-2

ORIGINAL SCALE IN INCHES 1/8"=1'-0"





#### CONSTRUCTION NOTES

- 1 FLEXIBLE TRANSITION COUPLING PER OMWD APPROVED MATERIALS LIST. CONNECTION SHALL BE AT NEAREST AC PIPE JOINT. FIELD VERIFY ALL CONNECTION POINT DEPTHS, SLOPES, JOINTS AND O.D. PRIOR TO ORDERING MATERIALS.
- 3 CONNECT TO PRS OUTLET WITH 1/2" X 1/2" FLG DI RESTRAINED BEND, PER OMWD AML. SEE DRAWINGS M-1 OR M-3 AS APPROPRIATE.
- 7 DEMOLISH EXISTING PRS BY REMOVING AND DISPOSING OF EXISTING UPPER THREE FEET OF PRECAST WATERPROOFED VAULT A MINIMUM OF ONE FOOT BELOW THE BOTTOM OF THE PROPOSED 14" DI PIPING. BREAK OR DRILL VAULT BOTTOM FOR DRAINAGE. BREAKOUT WALLS AS NEEDED TO INSTALL (N) 14" DI WATER. FILL VAULT WITH SAND OR 1-SACK SAND/CEMENT SLURRY AND COMPACT PER SPECIFICATIONS.
- 8 OBTAIN AND INSTALL OWNER FURNISHED PRS FROM DISTRICT HEADQUARTERS, SEE DRAWINGS M-1 THROUGH M-4 AS APPROPRIATE.
- 9 4" STEEL VENT PIPE, SEE SHEET C-6, DETAIL 2
- 10 DEMOLISH EXISTING VENT PIPING. REPLACE SECTION OF CURB AND GUTTER REMOVED DURING DEMOLITION TO MATCH EXISTING
- 11 1 1/2" PVC DRAIN LINE FROM HATCH TO 12" X 12" FILTER FABRIC WRAPPED GRAVEL PACK, OR SIMILAR
- 13 PROTECT IN PLACE AND REUSE EXISTING SCADA PANEL. PROTECT EXISTING ANTENNA POLE IN PLACE.
- 15 CONNECT TO EXISTING 14" ACP, SEE SHEET C-6, DETAIL 1.
- 16 REMOVE AND REPLACE EXISTING CURB, GUTTER, AND SIDEWALK, AS-NEEDED, MATCHING EXISTING GRADES, AND TO THE NEAREST JOINT, TO CONSTRUCT THE EFI FOUNDATION AND INSTALL THE EFI PRS AND PIPE CONNECTIONS. REPLACE CURB, GUTTER, SIDEWALK, CROSS CUTTERS, AND MISC PCC PER CITY OF ENCINITAS NOTE 4.
- 17 NEW 6" DI RELIEF DRAIN PIPE AND CANDY CANE WITH DUCK BILL OUTLET, CATCH BASING TYPE I, AND CURB OUTLET PER SDRSD D-25A AND D29, SEE C-4
- 21 SEE GENERAL CONSTRUCTION NOTE 1 ON DRAWING G-3
- 22 LIMITS OF PROJECT 2" FULL ROAD WIDTH GRIND AND OVERLAY EXTENDS FROM THE MORATORIUM LINE ON THE NORTH TO THE CURB RETURN AT THE SOUTH. RESTRIPE INCLUDING CROSSWALK PER CITY OF ENCINITAS NOTE 5. CONTRACTOR TO OBTAIN MORATORIUM WAIVER PER SPECIFICATION SPECIAL PROVISIONS
- 23 1.5" POWER AND COMMUNICATION CONDUITS PER SDRSD G-33. SEE DRAWING E-2.
- 24 REPLACE VEGETATION, GROUND COVER, HARDSCAPE, AND IRRIGATION, DISTURBED BY CONSTRUCTION, IN KIND AND SIMILAR SIZE. TEST IRRIGATION TO CONFIRM IT FUNCTIONS PROPERLY.
- 25 CONNECT 1 1/2" PVC SCH 80 SUMP PUMP DISCHARGE LINE TO 6" RELIEF PIPELINE PER OMWD STD DTL D-1.1
- 28 INSTALL 2-WIRE CTS WITH ANODES IN ACCORDANCE WITH STD DETAIL G-10. INSTALL TWO 32-LB STANDARD POTENTIAL MAGNESIUM ANODES WITH #12 THHN WIRE LEAD. ANODES TO BE PROVIDED BY THE MANUFACTURER.
- 29 INSTALL FLANGE ISOLATION KIT AND TEST STATION IN ACCORDANCE WITH STD DETAIL G-8. SEE TEST STATION WIRING DIAGRAM ON CP-2.
- 31 UTILITY TRENCH AND RESURFACING PER CITY OF ENCINITAS STANDARD DRAWING S-01A

#### GENERAL NOTES

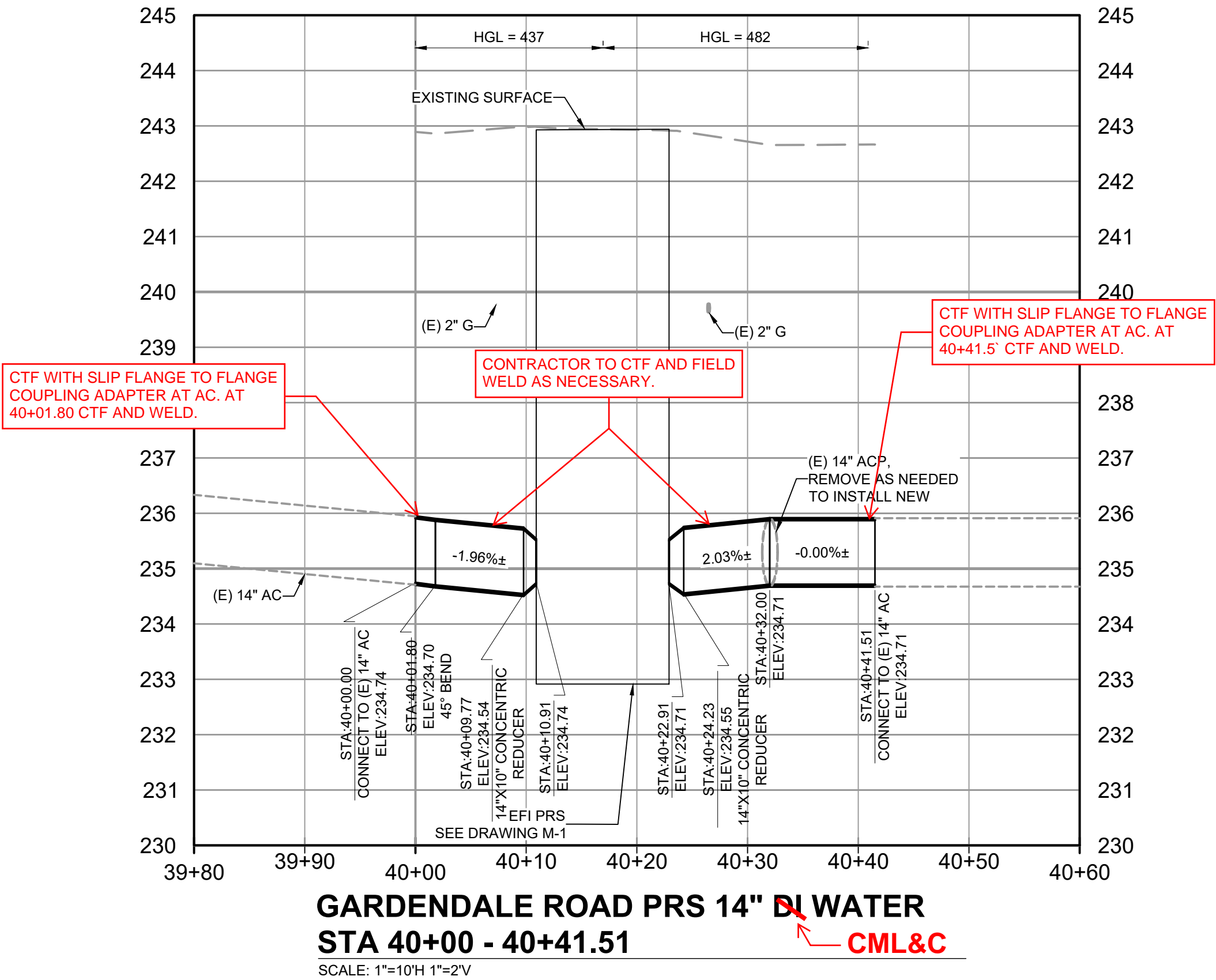
1. ALL DI PIPING TO BE FULLY RESTRAINED WITH FLG X FLG CONNECTIONS. DISMANTLING JOINTS, PER AML, CAN BE USED FOR CLOSURES AS APPROVED BY THE DISTRICT. EXCEPT WHERE INSULATING FLANGES ARE DESIGNATED, BOND ALL METALLIC PIPE JOINTS AND IN-LINE MECHANICAL JOINTS. IN ACCORDANCE WITH OMWD STANDARD DETAILS G-6 AND G-8. ALL BURIED DI PIPE TO BE POLYETHYLENE ENCASED (PER STD DETAIL G-5). ALL BURIED PIPE FITTINGS TO BE WAX TAPED (PER STD DETAIL G-6). INSTALL FLANGE ISOLATION KITS PER OMWD STANDARD SPEC 15310 AND STANDARD DETAIL G-8.
2. CONTRACTOR TO EXPECT GROUND WATER. SEE GEOTECHNICAL REPORT, DATED SEPTEMBER, 2023, IN APPENDIX A OF THE SPECIFICATIONS.
3. PROTECT ALL PCC IMPROVEMENTS IN PLACE, UNLESS INDICATED OTHERWISE.
4. FIELD VERIFY SLOPES OF ALL CONNECTING PIPES TO CONFIRM BENDS PRIOR TO ORDERING MATERIALS.

#### POTHOLE INVESTIGATION

#	UTILITY	SIZE	MATERIAL	DEPTH TO TOP
5	DRAIN	6"	STL	5.12'
6	WATER	14"	ACP	7.60'
7	WATER	14"	ACP	8.90'
8	GAS	2"	PE	3.04'

#### COORDINATE TABLE

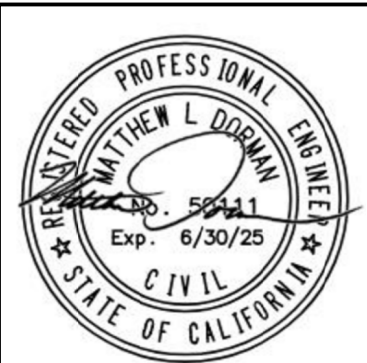
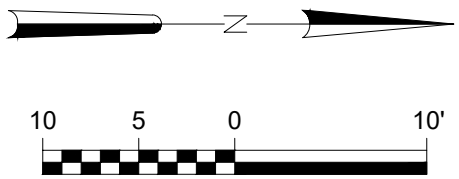
NO	STATION	NORTHING	EASTING	DESCRIPTION	SIZE
1	40+00.00	1964328.98	6255852.77	POC (21)	14"
2	40+01.80	1964330.78	6255852.70	45° BEND	14"
3	40+10.91	1964335.23	6255859.82	45° BEND POC	14"
4	40+22.91	1964348.65	6255859.34	45° BEND POC	14"
5	40+32.00	1964352.58	6255851.92	45° BEND	14"
6	40+41.51	1964362.07	6255851.58	POC (21)	14"



#### GARDENDALE ROAD PRS 14" DI WATER STA 40+00 - 40+41.51

SCALE: 1"=10'H 1"=2'V

1" = 10'



**BALBOA**  
ENGINEERING, INC.

**OLIVERHAIN**  
Municipal Water District  
1966 Oliverhain Road  
Encinitas, CA 92024 (760)753-6466

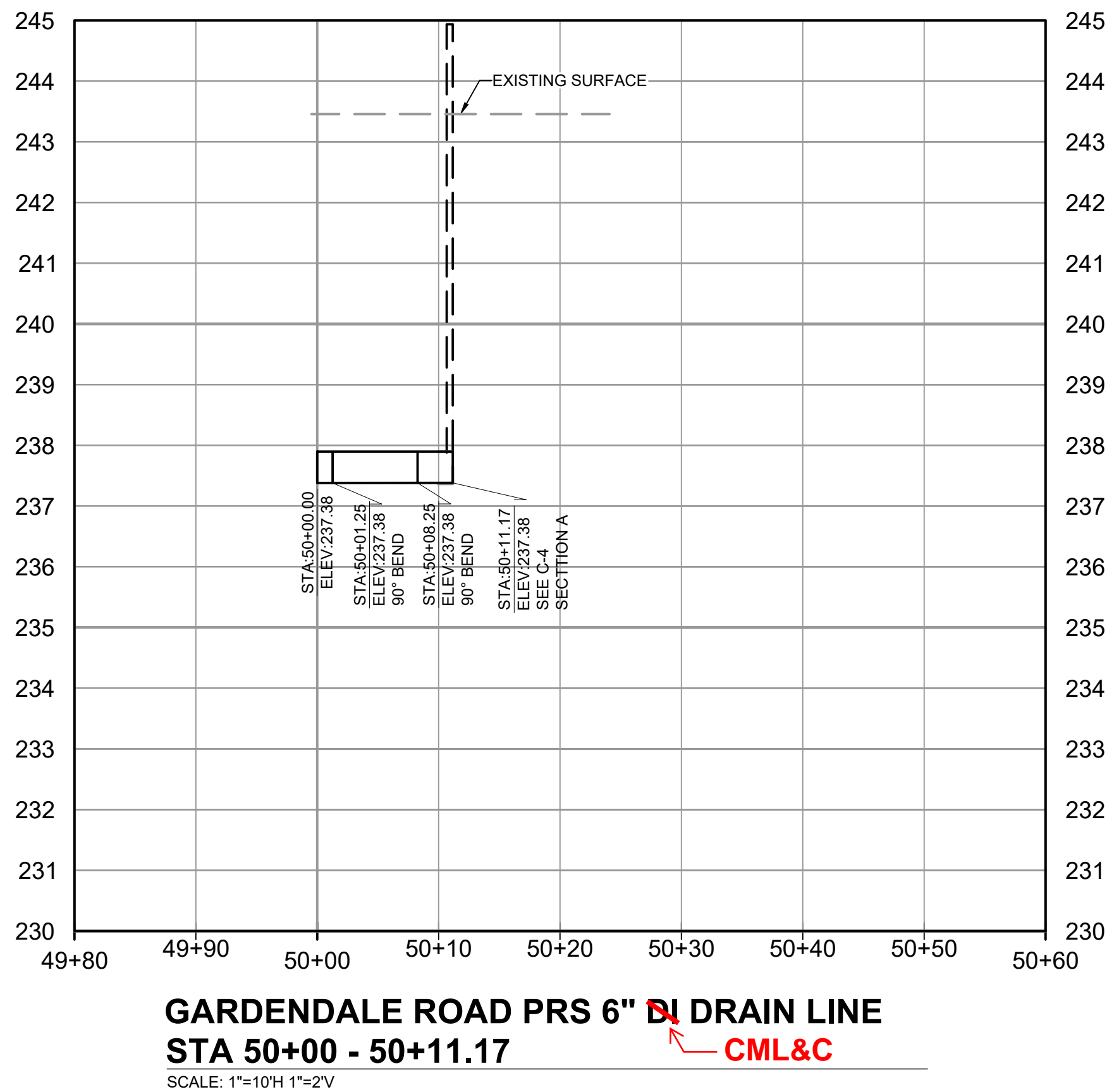
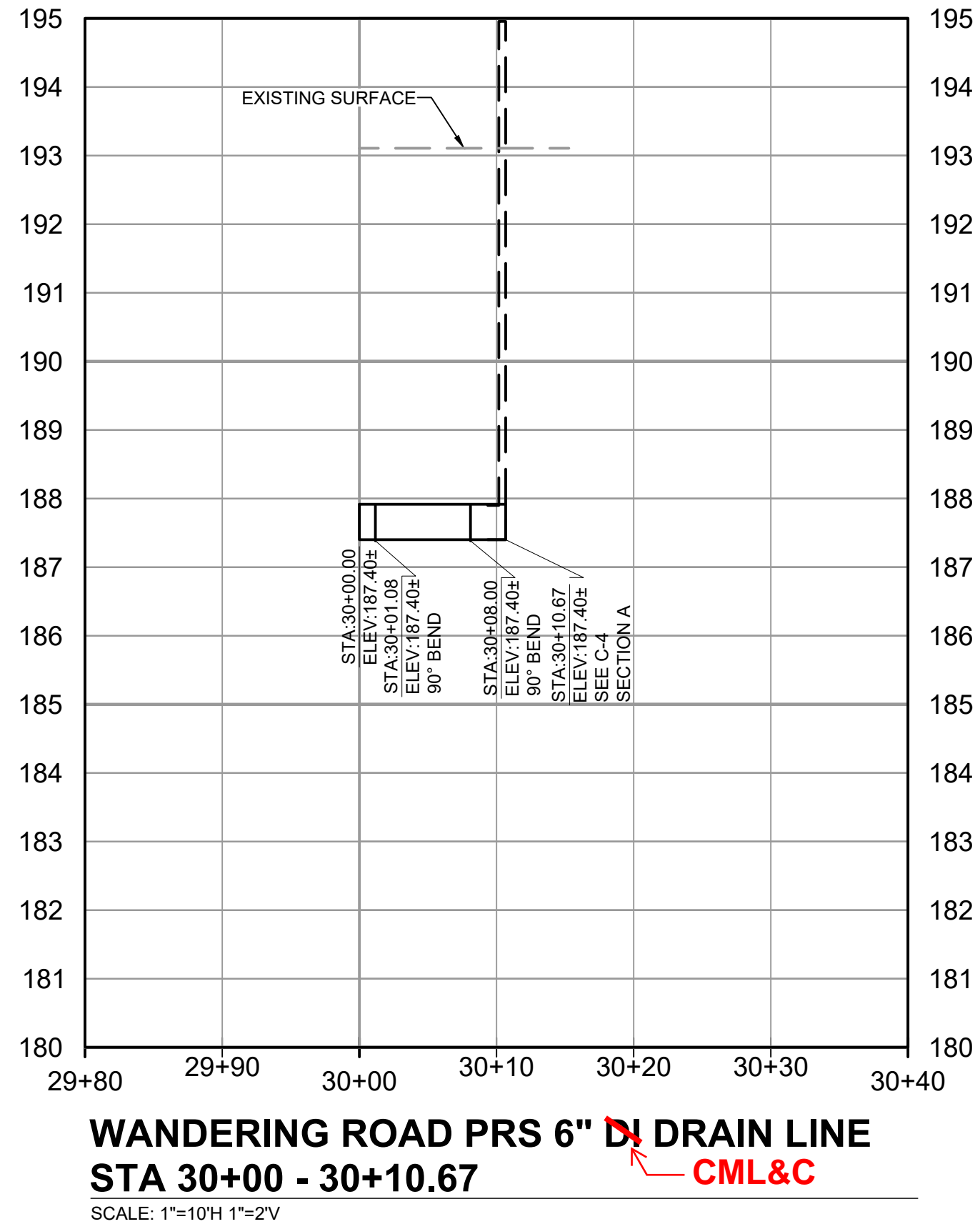
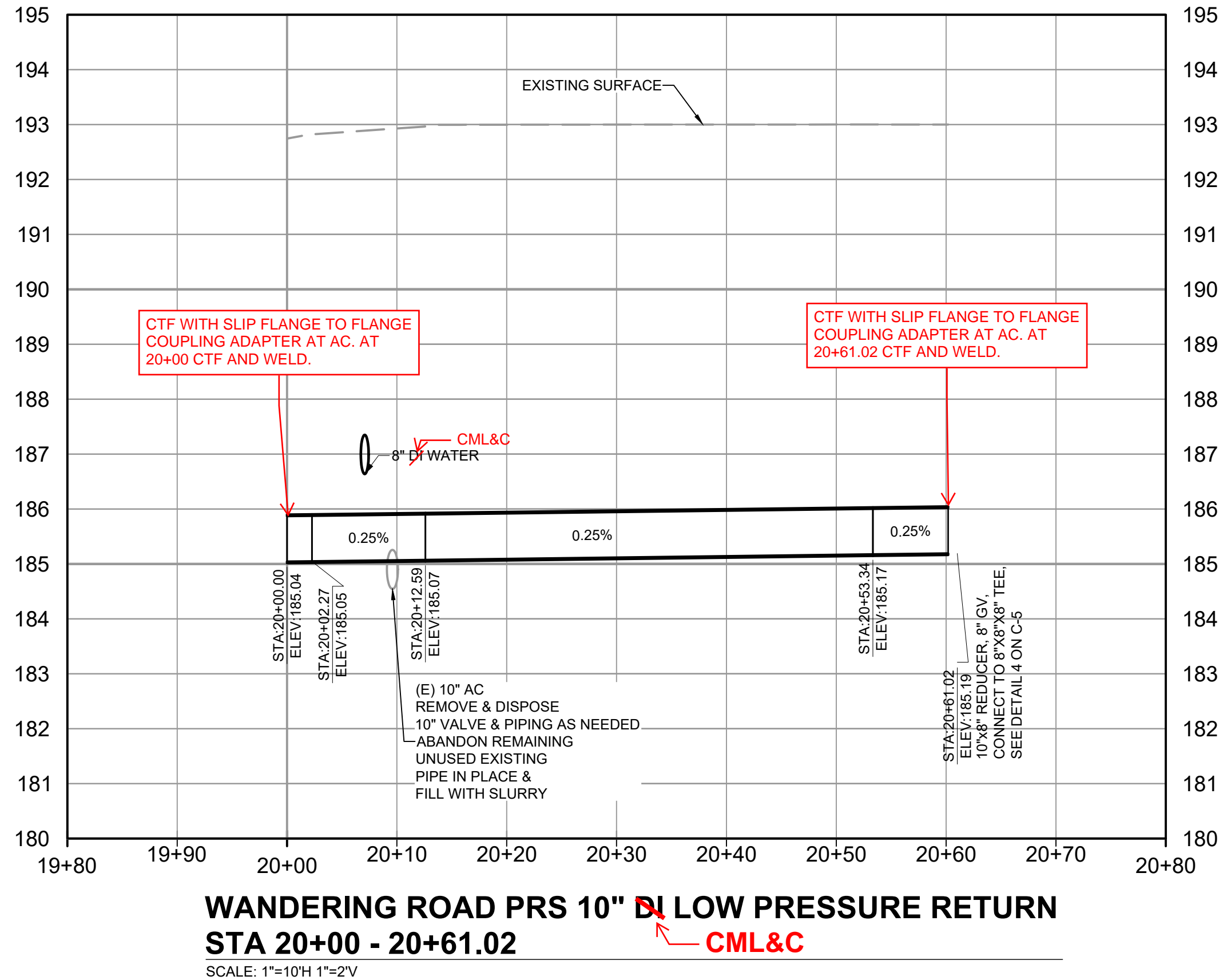
GARDENDALE AND VILLAGE PARK WEST  
PRS REPLACEMENTS

GARDENDALE ROAD  
14" WATER LINE IMPROVEMENTS

SHEET  
5 OF 22

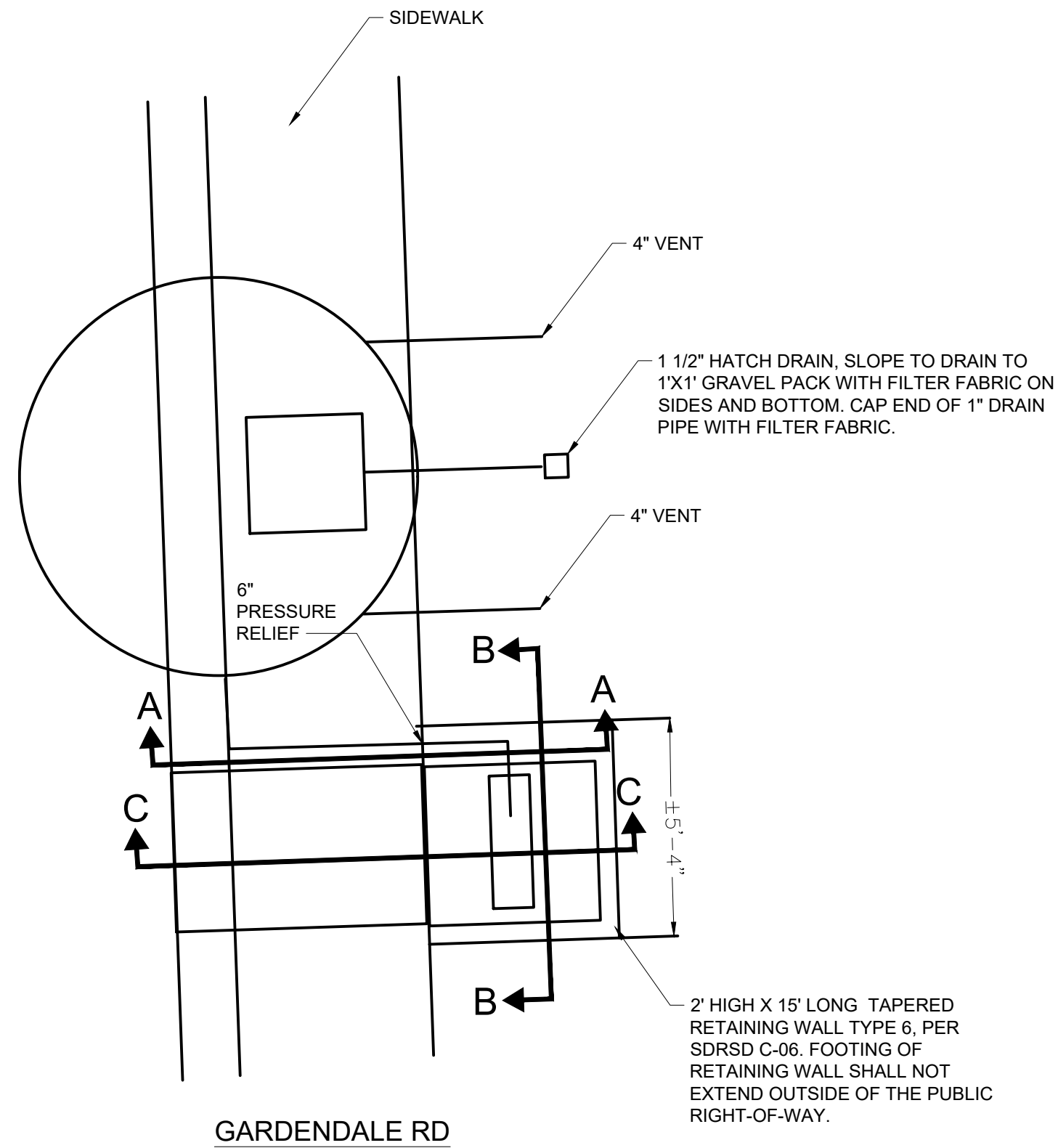
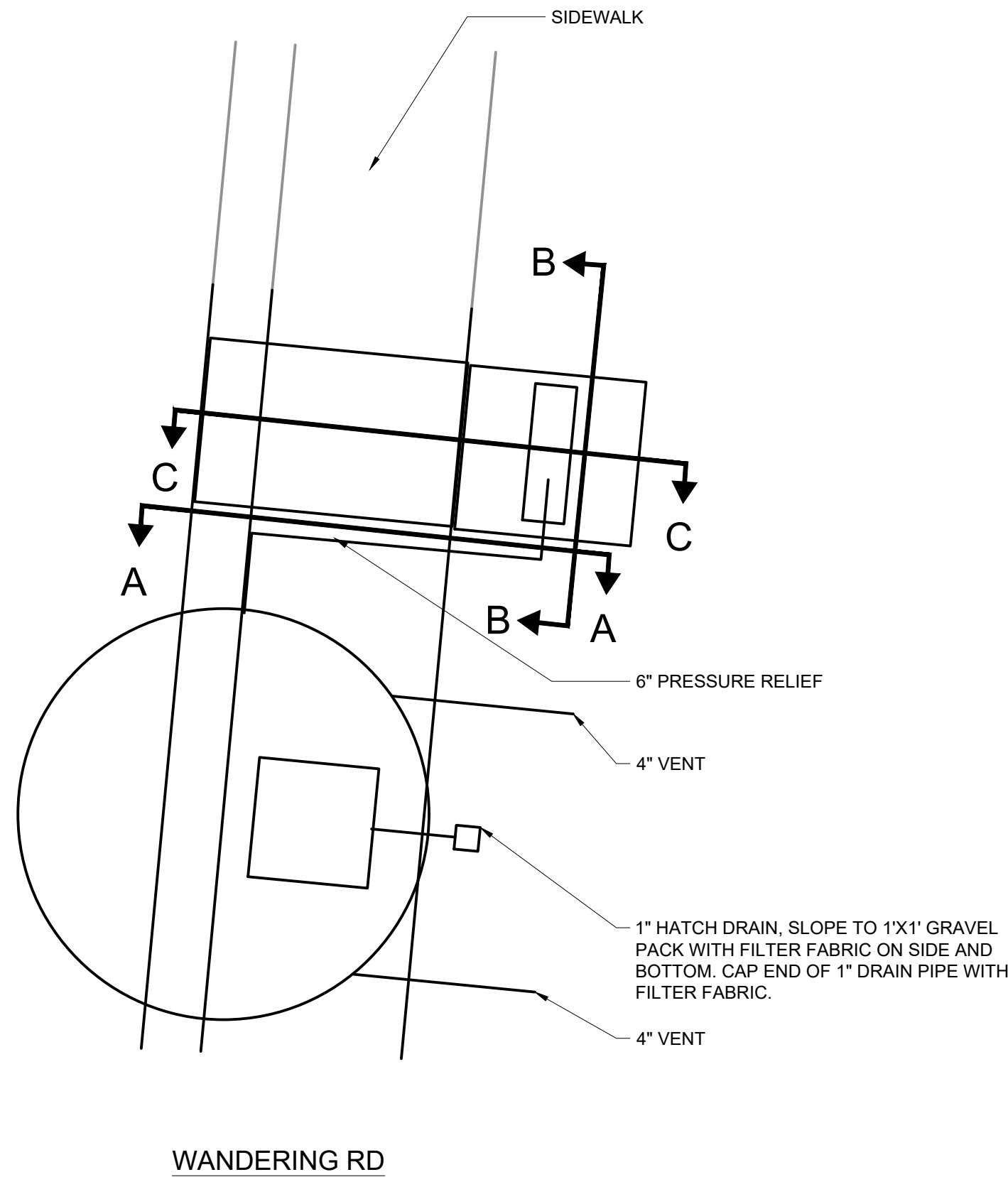
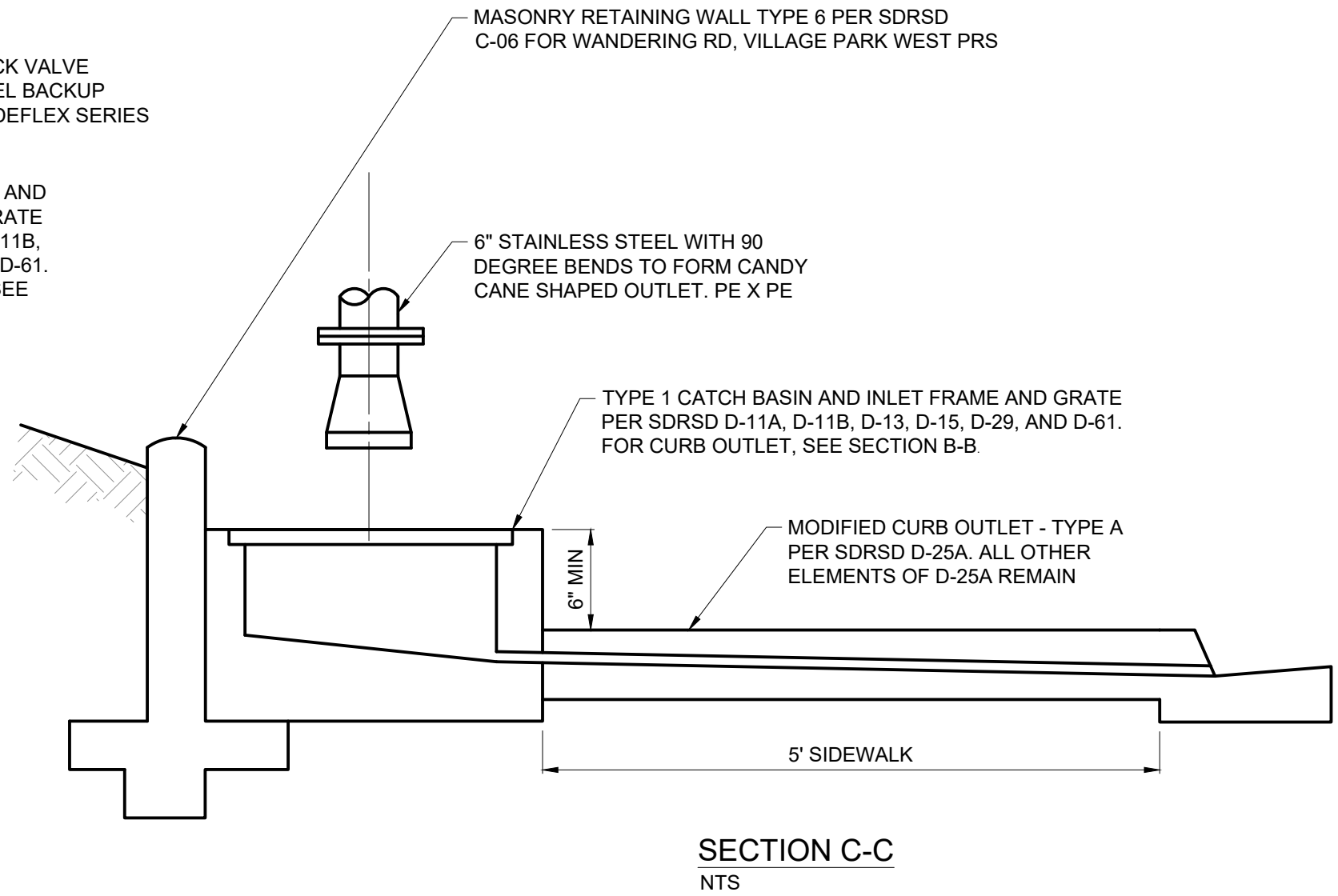
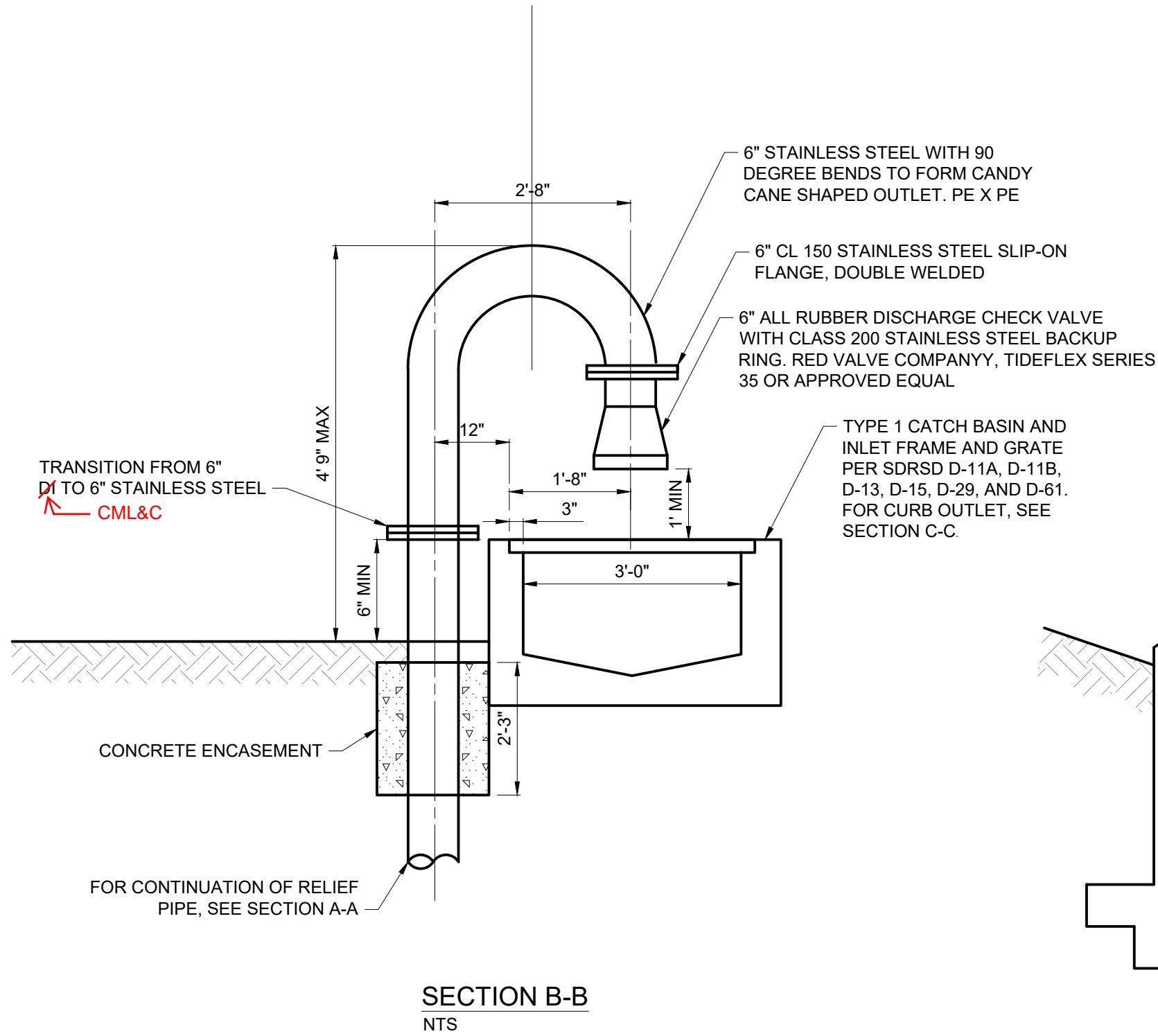
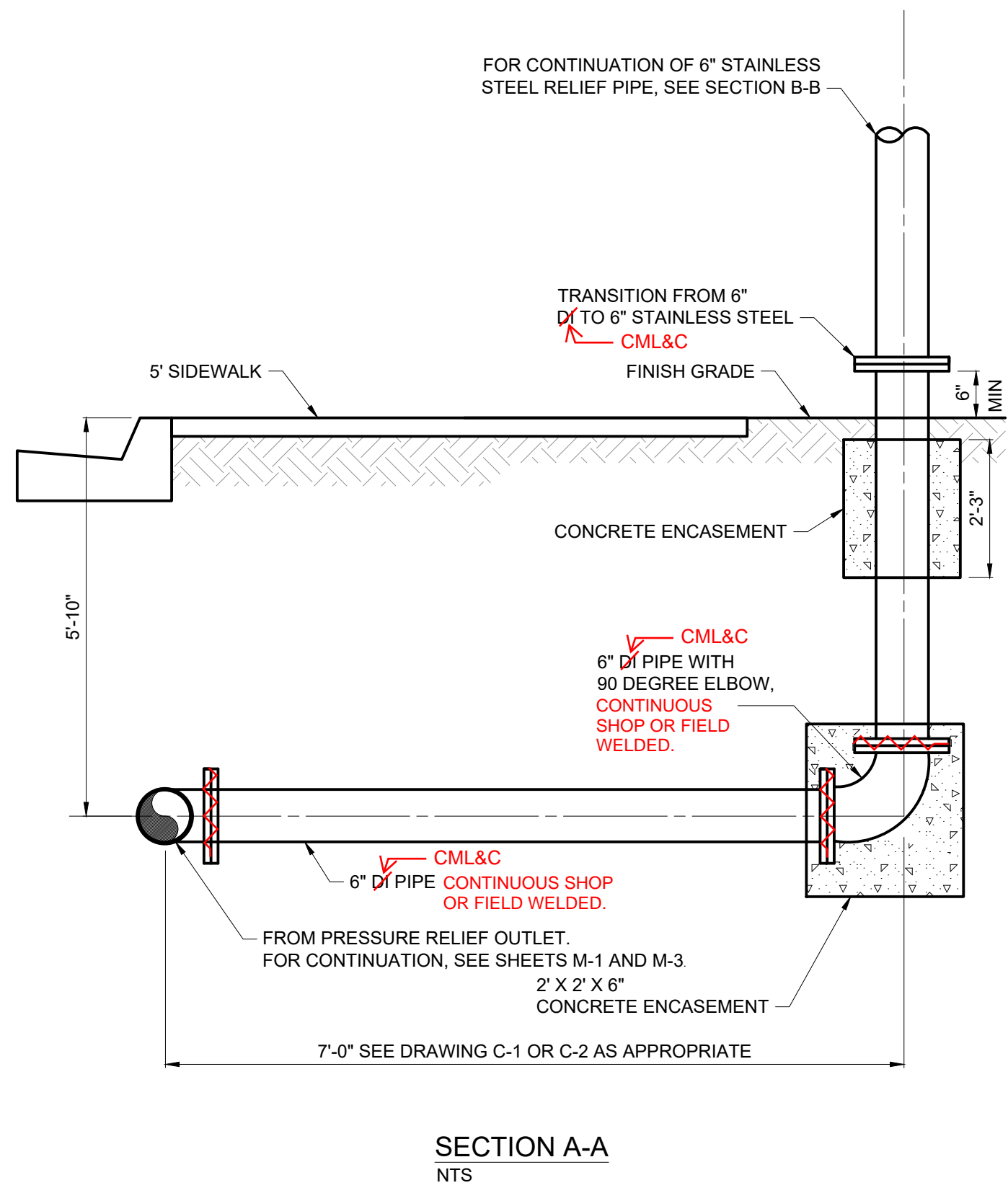
DRAWING  
C-2

ORIGINAL SCALE IN INCHES



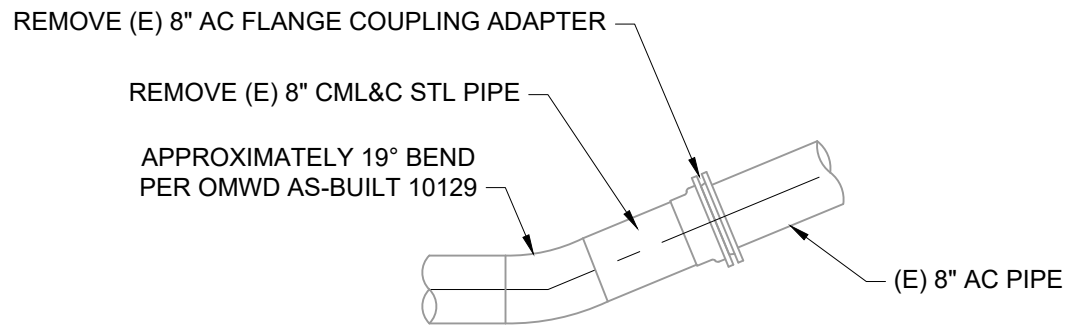
GARDENDALE AND VILLAGE PARK WEST PRS REPLACEMENTS		PRIS PIPING PROFILES	
SHEET 6 OF 22		DRAWING C-3	
BALBOA ENGINEERING, INC.		OLIVENHAIN Municipal Water District 1966 Olivenhain Road Encinitas, CA 92024 (760)753-6466	
DESIGN	DRAWN	CHECK	MARK
			DATE
			BY
			REVISIONS
			8/7/24 MID ADDENDUM 1

ORIGINAL SCALE IN INCHES 0 1 2 3 4

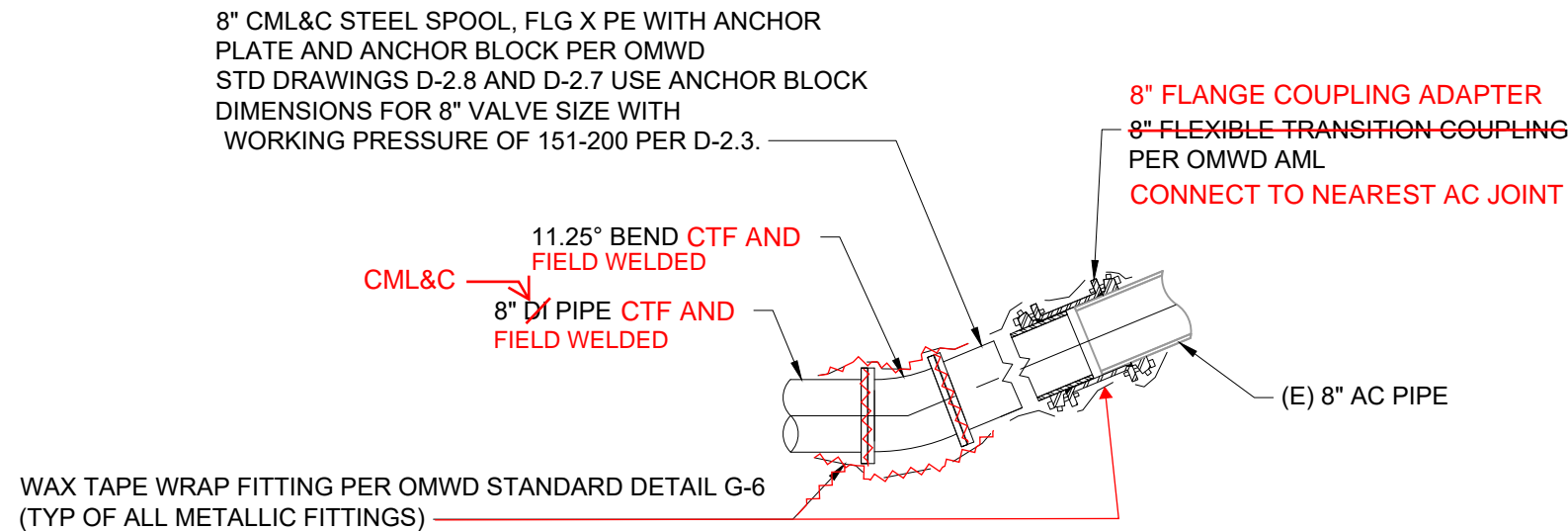


GARDENDALE AND VILLAGE PARK WEST PRS REPLACEMENTS		CURB OUTLET SECTIONS	
SHEET 7 OF 22	DRAWING C-4	BALBOA ENGINEERING, INC.	
OLIVENHAIN Municipal Water District 1966 Olivenhain Road Encinitas, CA 92024 (760)753-6466		DESIGN DRAWN CHECK MARK DATE BY REVISIONS	
		ADDENDUM 1 8/7/24 MLD	

C:\Users\jwilliams\DC\ACCDocs\Hazen and Sawyer\20078-007-Gardendale and Village Park\Project Files\ProjectWise\Civil\C-5 5/1/2024 5:36 PM



EXISTING CONDITIONS

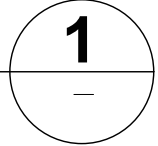


NOTE:  
CML&C STEEL SPOOL JOINTS SHALL BE BONDED PER OMWD STD DWG G-5.

NEW WORK

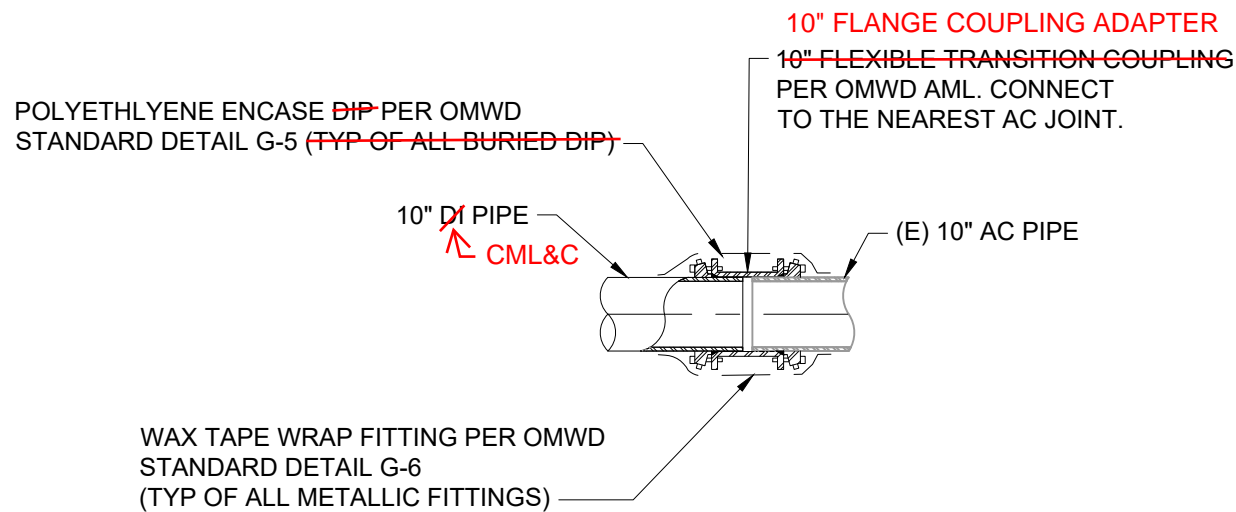
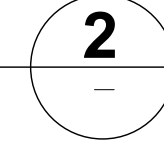
### WANDERING ROAD - VILLAGE PARK WEST PRS STA 9+96± 8" CONNECTION

NOT TO SCALE



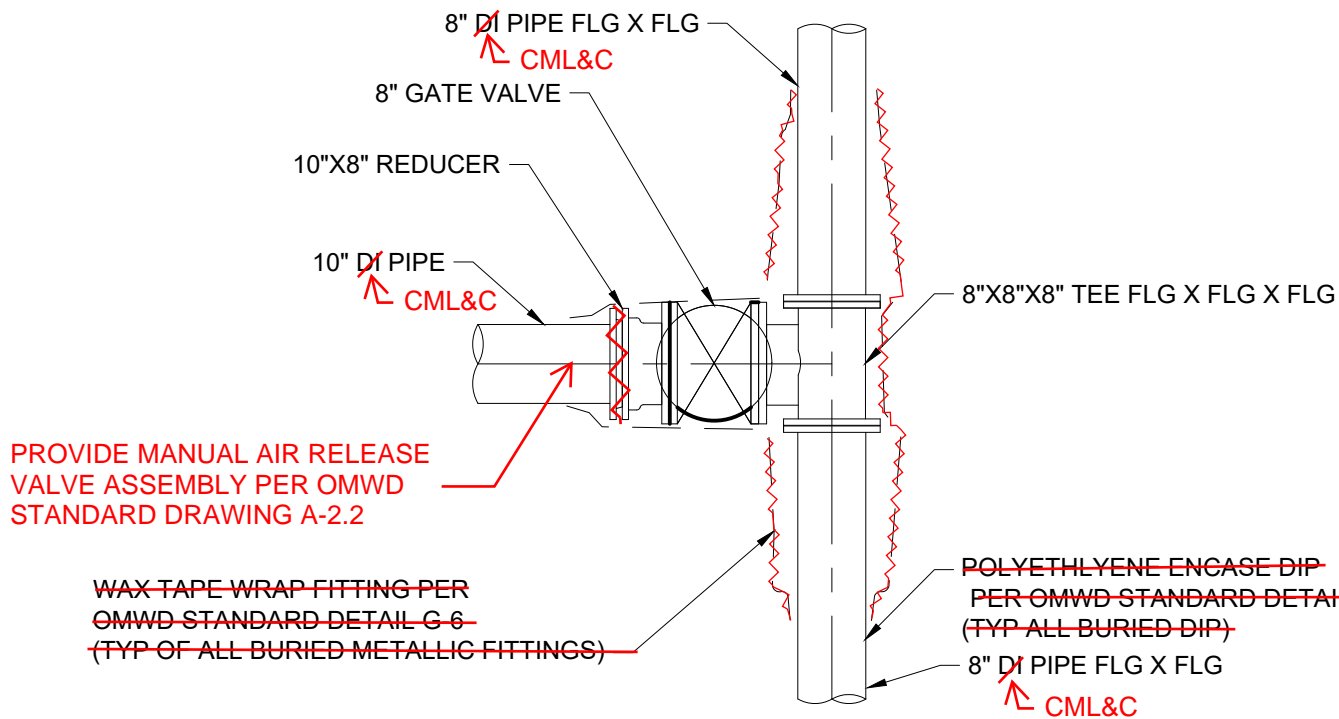
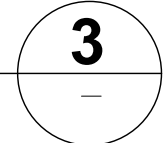
### WANDERING ROAD - VILLAGE PARK WEST PRS STA 10+99.17 8" CONNECTION

NOT TO SCALE



### WANDERING ROAD - VILLAGE PARK WEST PRS STA 20+00 10"CONNECTION

NOT TO SCALE



### WANDERING ROAD - VILLAGE PARK WEST PRS STA 20+60.75 10" CONNECTION

NOT TO SCALE



#### CONSTRUCTION NOTES

- FIELD VERIFY ALL CONNECTION POINT EXISTING MATERIAL DEPTHS, SLOPES, JOINTS, AND O.D. PRIOR TO ORDER MATERIALS (TYP).



GARDENDALE AND VILLAGE PARK WEST  
PRS REPLACEMENTS

SHEET  
8 OF 22

PRS PIPING DETAILS I

DRAWING  
C-5



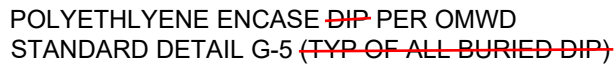
Municipal Water District  
1966 Olivenhain Road  
Encinitas, CA 92024 (760)753-6466

**BALBOA**  
ENGINEERING, INC.

DESIGN  
DRAWN  
CHECK

MARK DATE BY REVISIONS  
8/7/24 MLD APPENDUM 1

ORIGINAL SCALE IN INCHES 1/8"=1'-0"



NOT TO SCALE

1



NOT TO SCALE

2



## PRS REPLACEMENTS

Municipal Water District  
1966 Olivenhain Road

1966 Olivenham Road  
Encinitas, CA 92024 (760)753-6466

ENGINEERING, INC.

DESIGN	DRAWN	CHECK
--------	-------	-------