

NOTES:

1. FOR SEWER MAINS 15" & SMALLER, USE 4'-0" DIA MANHOLES WITH 24" MANHOLE FRAME & COVER.
2. FOR SEWER MAINS 18" & LARGER, USE 5'-0" DIA MANHOLES WITH 36" MANHOLE FRAME & COVERS.
3. VERTICAL WALL OF CONE TO BE ON THE UPSTREAM SIDE OF MANHOLE. SEE STD DWG NO. F-5 FOR ACCESS LOCATIONS.
4. MANHOLES FOR SEWER MAINS 18" AND LARGER SHALL BE COATED AND LINED PER STD DWG NO. F-8.

—○—  
LEGEND ON PLANS

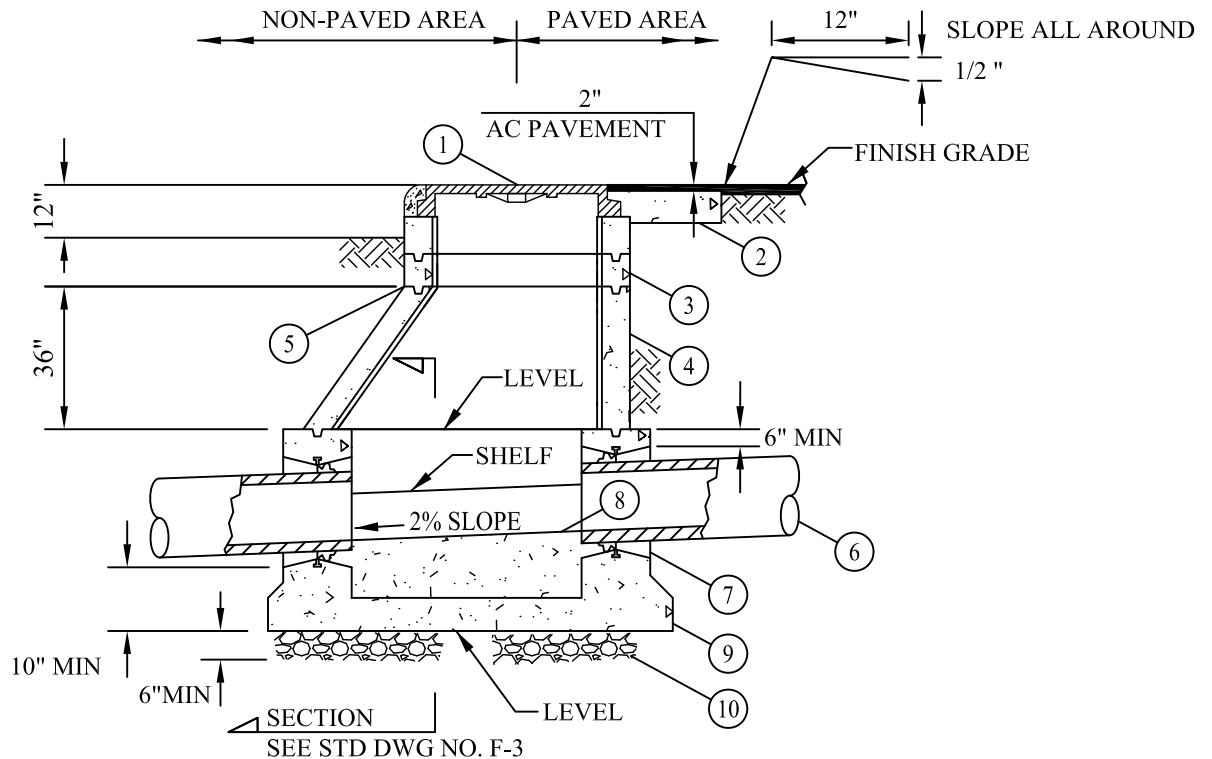
ITEM	DESCRIPTION	SPEC/DWG
1	24" OR 36" MANHOLE FRAME AND COVER(S)	03461/F-6/F-7
2	12" WIDE x 6" THICK CONCRETE RING	03000
3	24" OR 36" DIA PRECAST CONC GRADE RINGS, 6" TO 18" HIGH	03461
4	PRECAST CONCRETE ECCENTRIC CONE, 2'x4' OR 3'x5'	03461
5	4'-0" OR 5'-0" DIA PRECAST CONC SHAFT SECTIONS	03461
6	WATERTIGHT JOINTS	03461/F-5
7	SEWER MAIN	15065
8	MANHOLE PIPE CONNECTORS	03461/F-4
9	FIELD INSTALLED INVERT	03461/F-4
10	PRECAST OR CAST IN PLACE CONCRETE BASE	03461/03000/F-3
11	3/4" CRUSHED ROCK, 6" THICK	02223

## OLIVENHAIN MUNICIPAL WATER DISTRICT

**BOYLE**  
ENGINEERING  
CORPORATION

4'-0" AND 5'-0" DIAMETER  
PRECAST MANHOLE INSTALLATION

STD DWG NO.  
F-1  
JUNE 2008



NOTES:

- FOR SEWER MAINS 15" & SMALLER, USE 4'-0" DIA MANHOLES WITH 24" MANHOLE FRAME & COVER.
- FOR SEWER MAINS 18" & LARGER, USE 5'-0" DIA MANHOLES WITH 36" MANHOLE FRAME & COVERS.
- VERTICAL WALL OF CONE TO BE ON THE UPSTREAM SIDE OF MANHOLE. SEE STD DWG NO. F-5 FOR ACCESS LOCATIONS.
- MANHOLES FOR SEWER MAINS 18" AND LARGER SHALL BE COATED AND LINED PER STD DWG NO. F-8.

—○—  
LEGEND ON PLANS

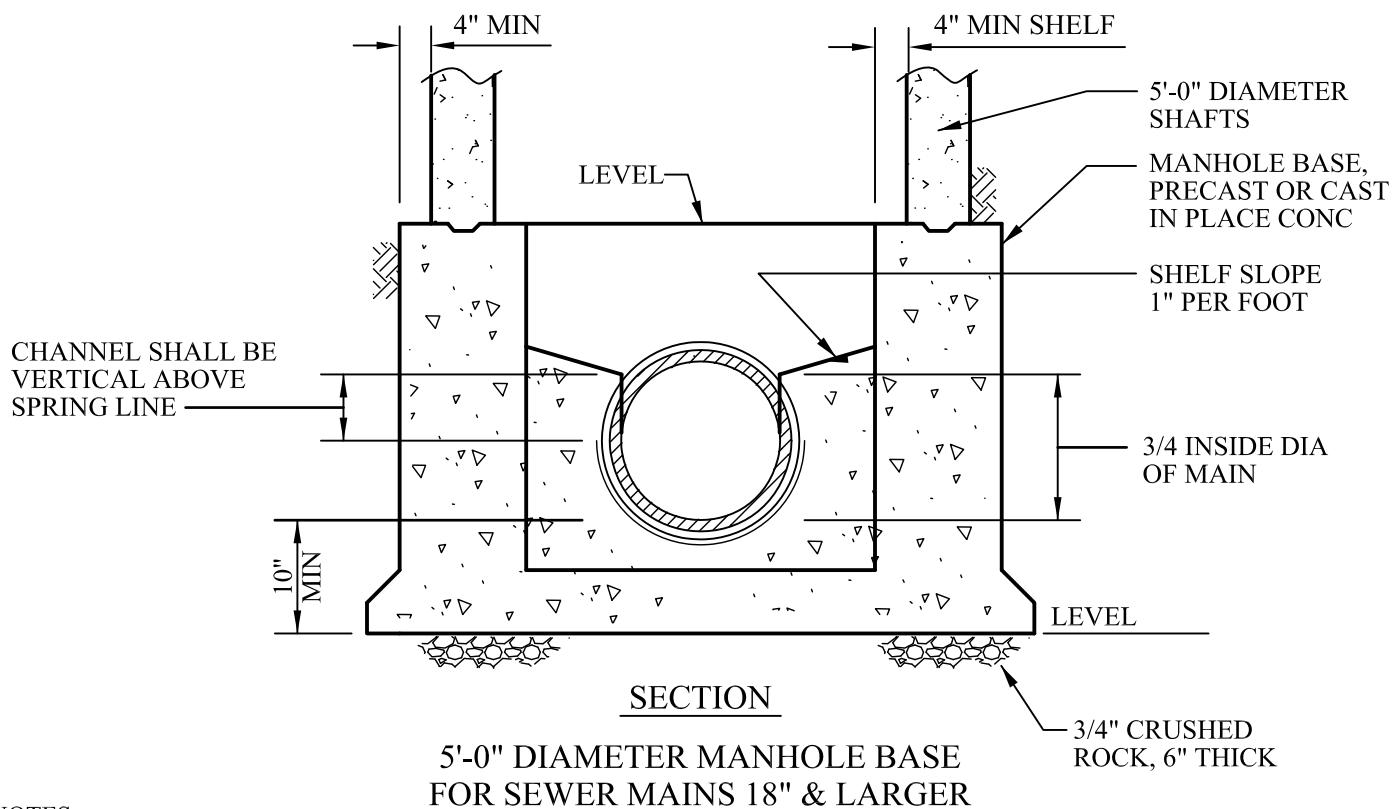
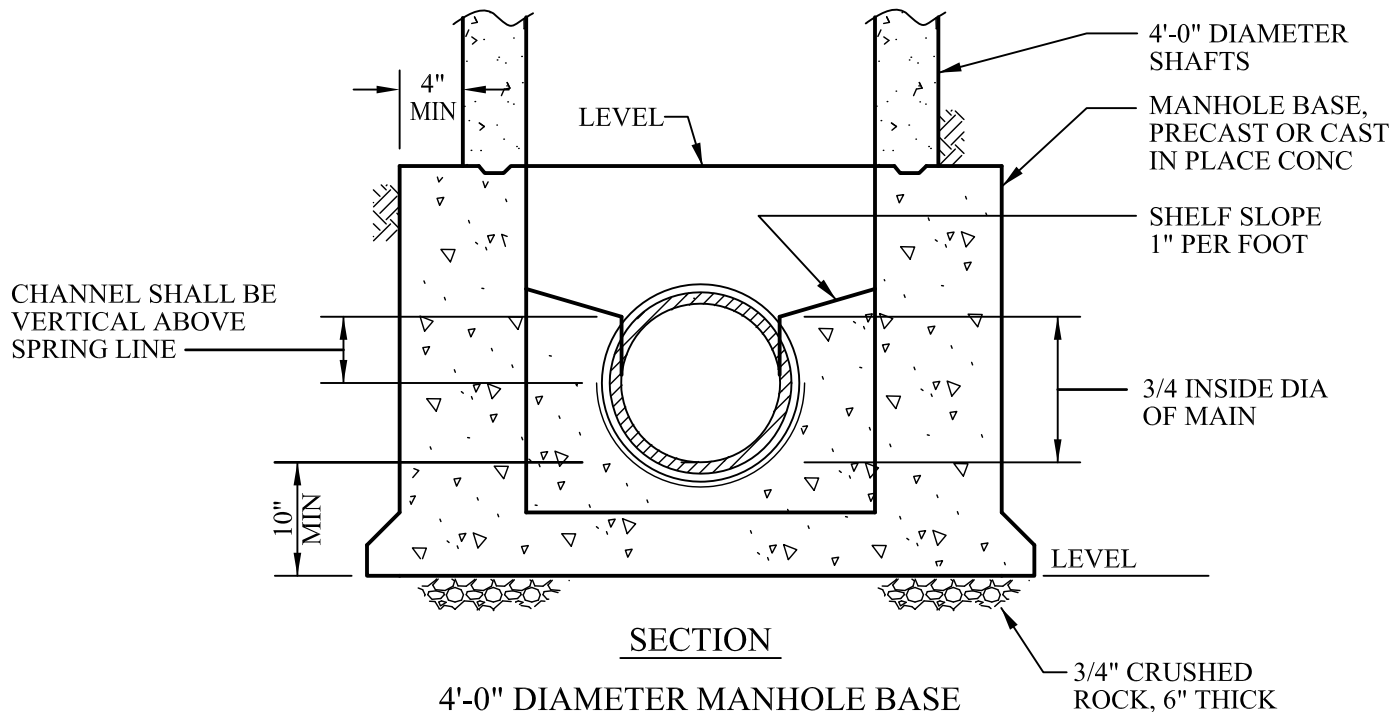
ITEM	DESCRIPTION	SPEC/DWG
1	24" OR 36" MANHOLE FRAME AND COVER(S)	03461/F-6/F-7
2	12" WIDE x 6" THICK CONCRETE RING	03000
3	24" OR 36" DIA PRECAST CONC GRADE RINGS, 6" TO 18" HIGH	03461
4	PRECAST CONCRETE ECCENTRIC CONE, 2'x4' OR 3'x5'	03461
5	WATERTIGHT JOINTS	03461/F-5
6	SEWER MAIN	15065
7	MANHOLE PIPE CONNECTORS	03461/F-4
8	FIELD INSTALLED INVERT	03461/F-4
9	PRECAST OR CAST IN PLACE CONCRETE BASE	03461/03000/F-3
10	3/4" CRUSHED ROCK, 6" THICK	02223

## OLIVENHAIN MUNICIPAL WATER DISTRICT

**BOYLE**  
ENGINEERING  
CORPORATION

4'-0" AND 5'-0" DIAMETER SHALLOW  
PRECAST MANHOLE INSTALLATION

STD DWG NO.  
**F-2**  
JUNE 2008



NOTES:

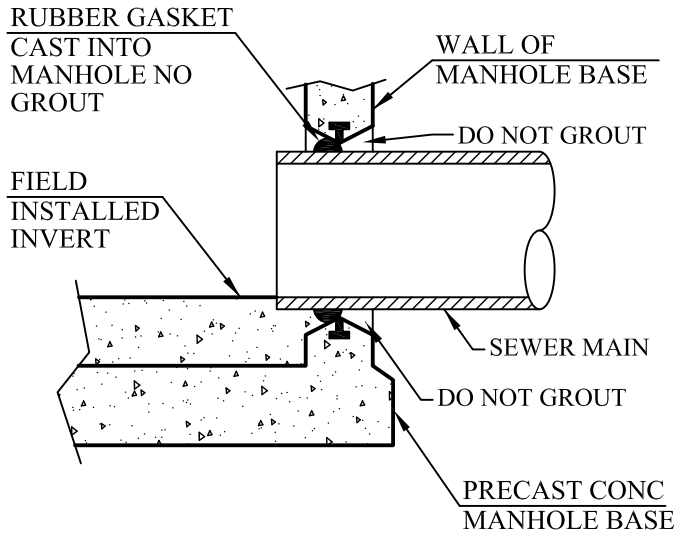
1. SEE STANDARD SPECIFICATION SECTION 03461.
2. FOR MANHOLE INSTALLATIONS, SEE STD DWG NO. F-1 AND F-2.
3. MANHOLES FOR SEWER MAINS 18" AND LARGER SHALL BE COATED AND LINED PER STD DWG NO. F-8

# OLIVENHAIN MUNICIPAL WATER DISTRICT

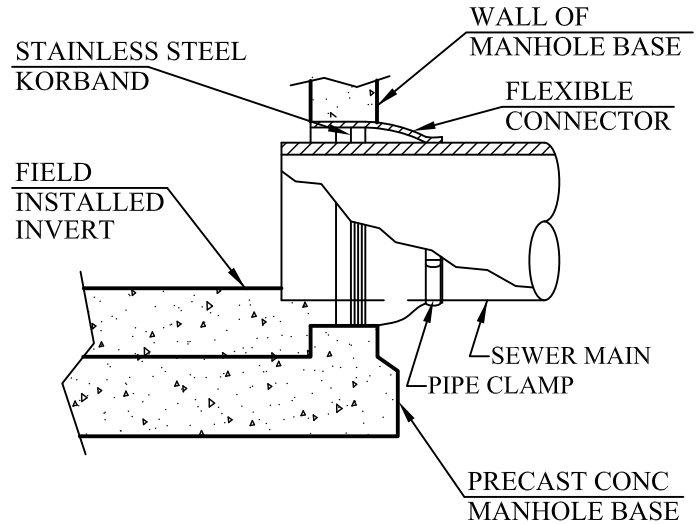
**BOYLE**  
ENGINEERING  
CORPORATION

4'-0" AND 5'-0" DIAMETER  
MANHOLE BASES

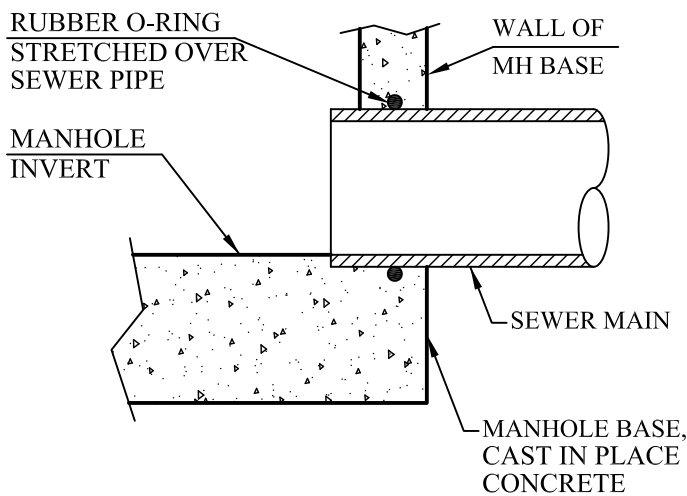
STD DWG NO.  
F-3  
JUNE 2008



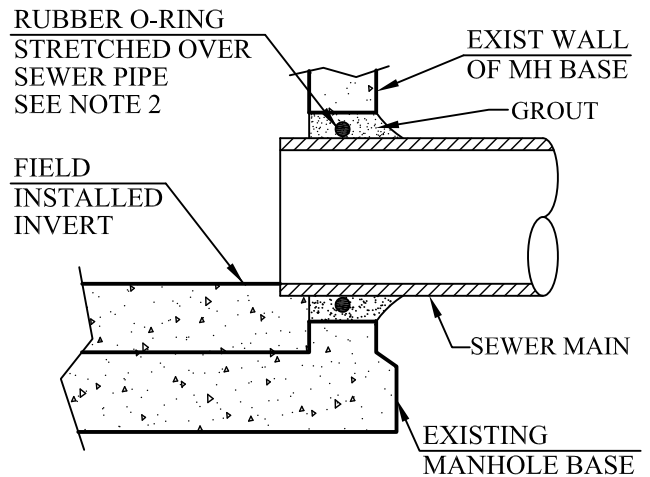
PRECAST MANHOLE BASE TYPE "A"



PRECAST MANHOLE BASE TYPE "B"



CAST IN PLACE MANHOLE BASE



BREAKING INTO EXISTING MANHOLE BASE

NOTES:

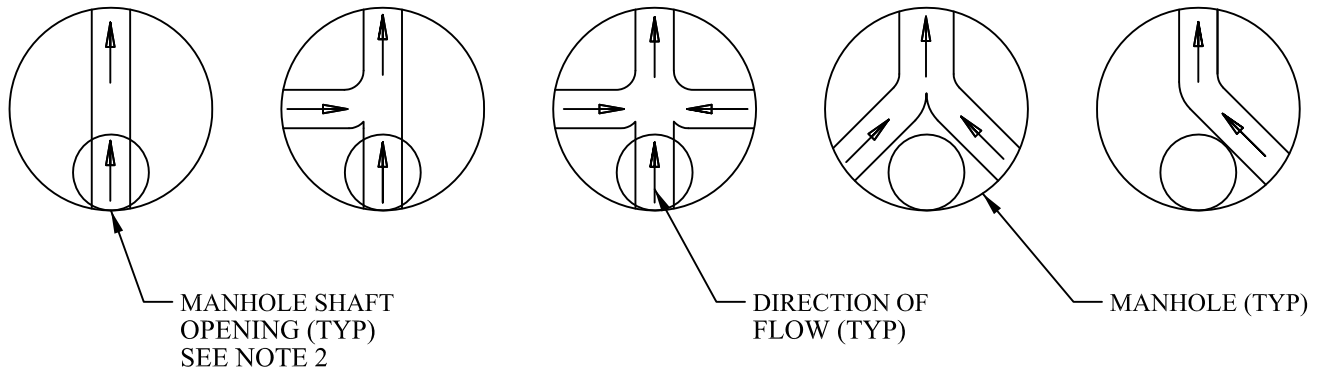
1. SEE STANDARD SPECIFICATION SECTION 03461.
2. A RUBBER O-RING OR A FLEXIBLE CONNECTOR (AS SHOWN IN PRECAST MANHOLE BASE TYPE "B") CAN BE USED WHEN BREAKING INTO EXISTING MANHOLES.
3. MANHOLES FOR SEWER MAINS 18" AND LARGER SHALL BE COATED AND LINED PER STD DWG NO. F-8

**OLIVENHAIN MUNICIPAL WATER DISTRICT**

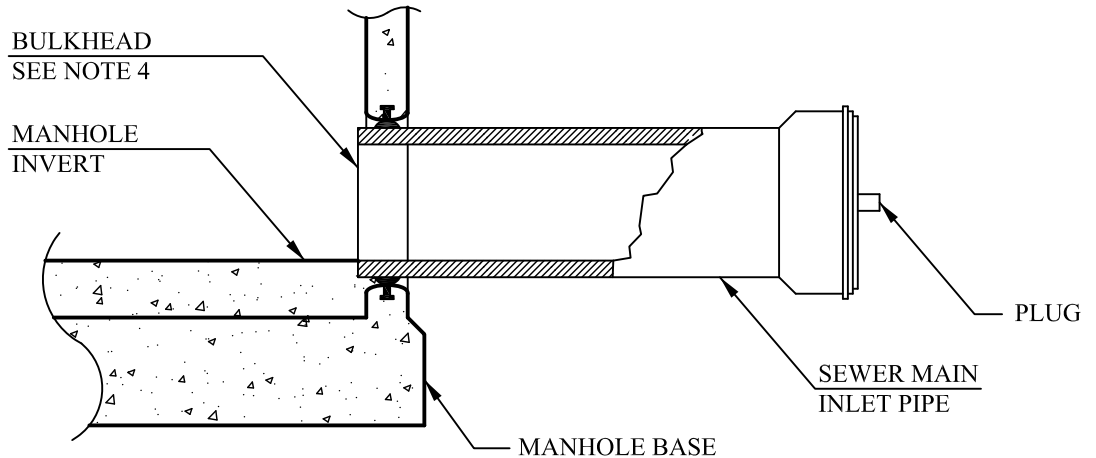
**BOYLE**  
ENGINEERING  
CORPORATION

**MANHOLE PIPE  
CONNECTORS**

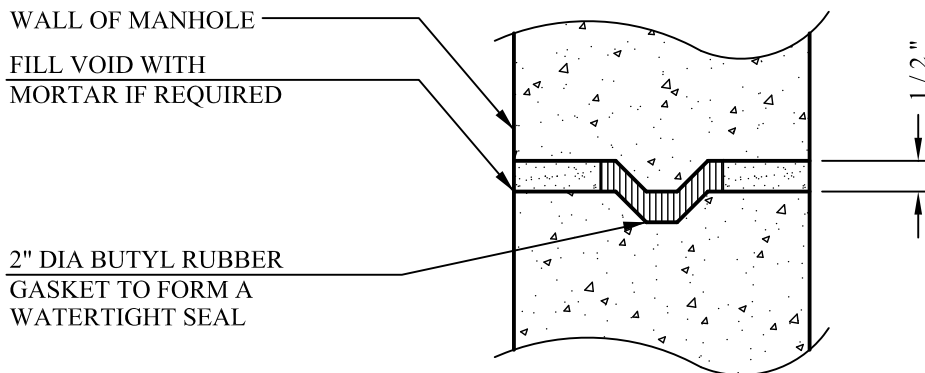
**STD DWG NO.**  
**F-4**  
JUNE 2008



MANHOLE ACCESS LOCATION PLAN VIEW



MANHOLE STUB OUT FOR FUTURE CONNECTION



WATERTIGHT MANHOLE JOINT

NOTES:

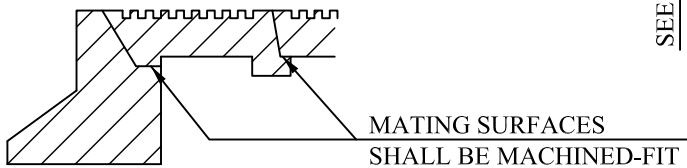
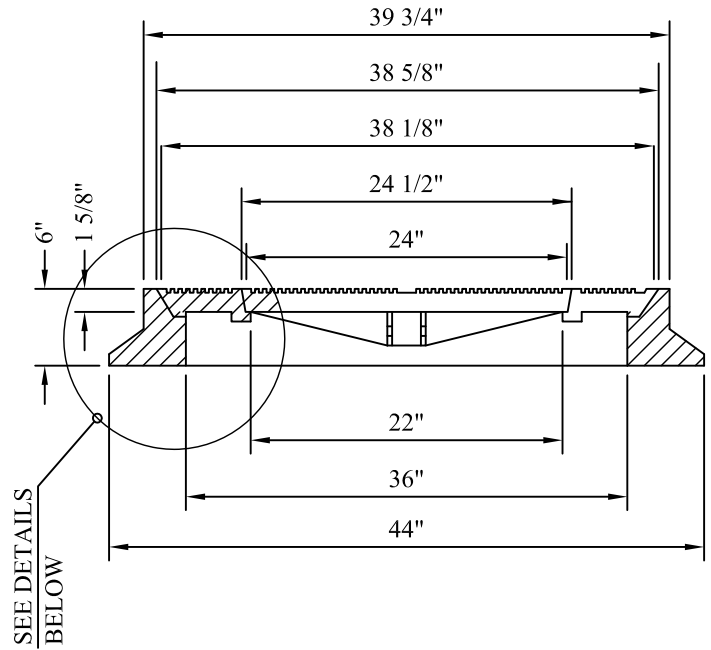
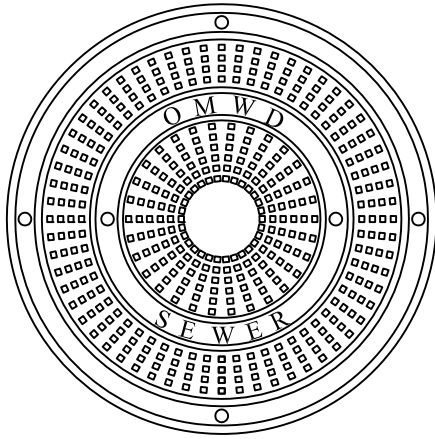
1. SEE STANDARD SPECIFICATION SECTION 03461.
2. VERTICAL WALL OF CONE TO BE ON THE UPSTREAM SIDE OF MANHOLE.
3. MANHOLES FOR SEWER MAINS 18" AND LARGER SHALL BE COATED AND LINED PER STD DWG NO. F-8.
4. BULKHEADS SHALL BE INSTALLED AT THE MANHOLE END OF STUBS.
5. SEWER MAINS TO BE LAID WITH BELLS UP-GRADE.

**OLIVENHAIN MUNICIPAL WATER DISTRICT**

**BOYLE**  
ENGINEERING  
CORPORATION

**MANHOLE ACCESS LOCATIONS AND  
STUB OUT AND JOINT DETAILS**

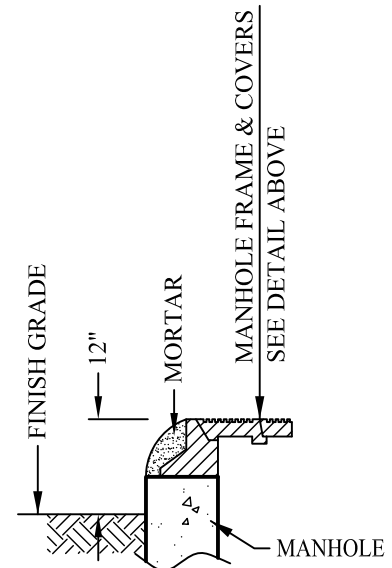
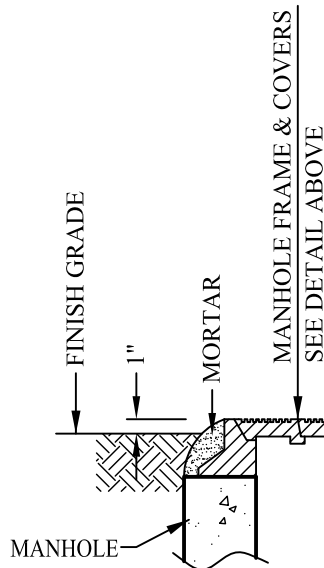
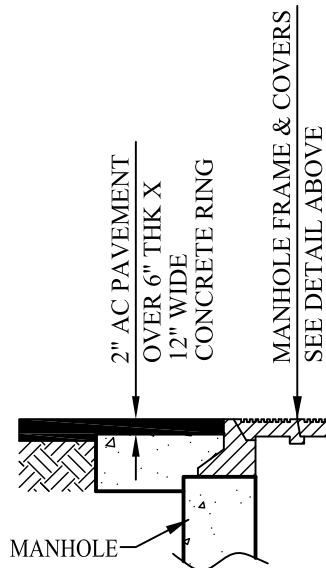
STD DWG NO.  
**F-5**  
JUNE 2008



### MACHINED DETAIL

### MANHOLE FRAME AND COVERS

USE ALHAMBRA A-1325 OR  
DISTRICT APPROVED EQUAL.



NOTE:

1. SEE STANDARD SPECIFICATION SECTION 03461.

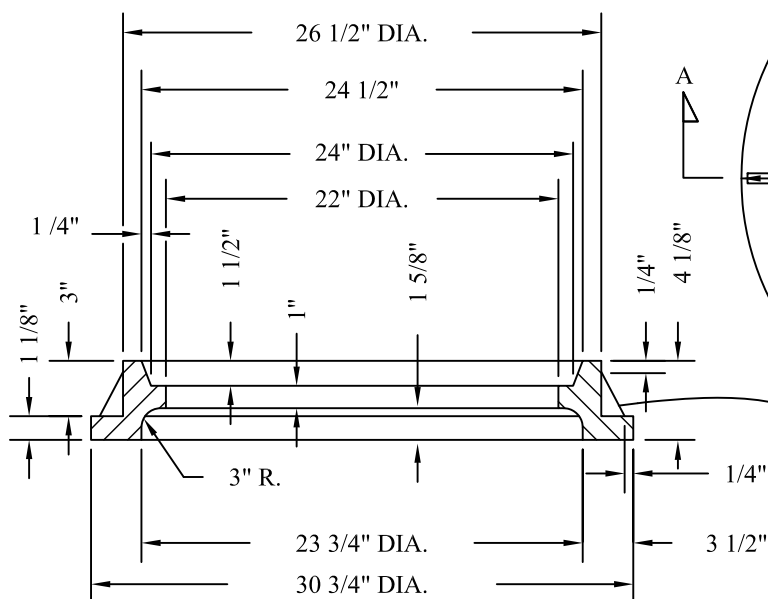
## OLIVENHAIN MUNICIPAL WATER DISTRICT

**BOYLE**  
ENGINEERING  
CORPORATION

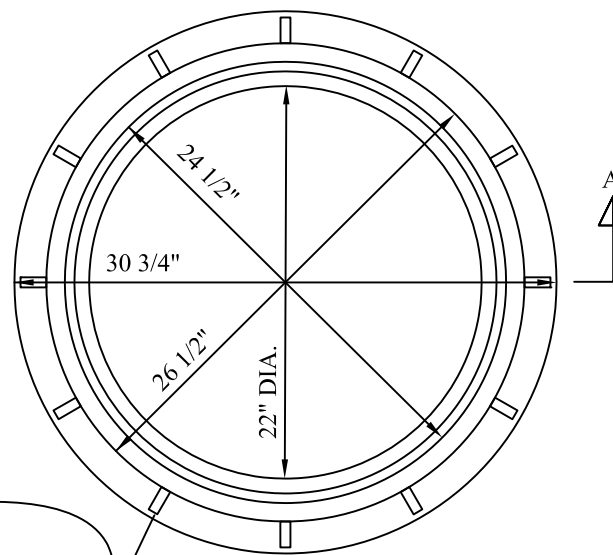
36" MANHOLE FRAME AND COVERS

STD DWG NO.  
F-6  
JUNE 2008

USE ALHAMBRA A-1310 OR DISTRICT APPROVED EQUAL.

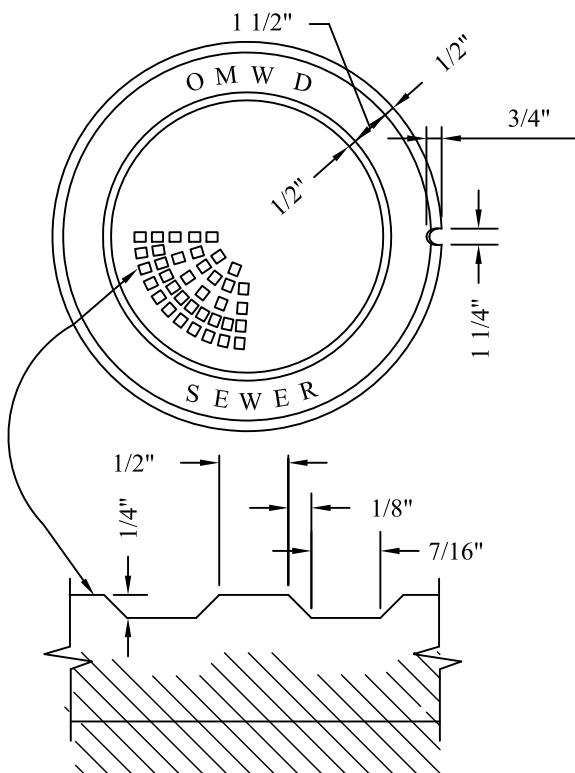


SECTION A-A

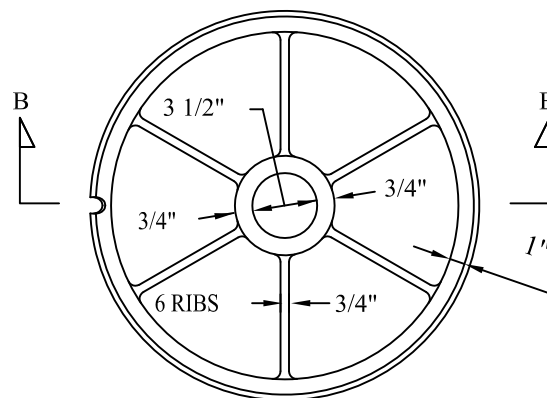


FRAME

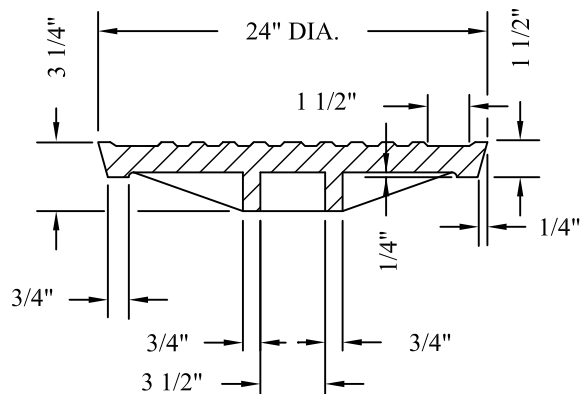
12 RIBS, EQUALLY SPACED



COVER



COVER BOTTOM



SECTION B-B

NOTES:

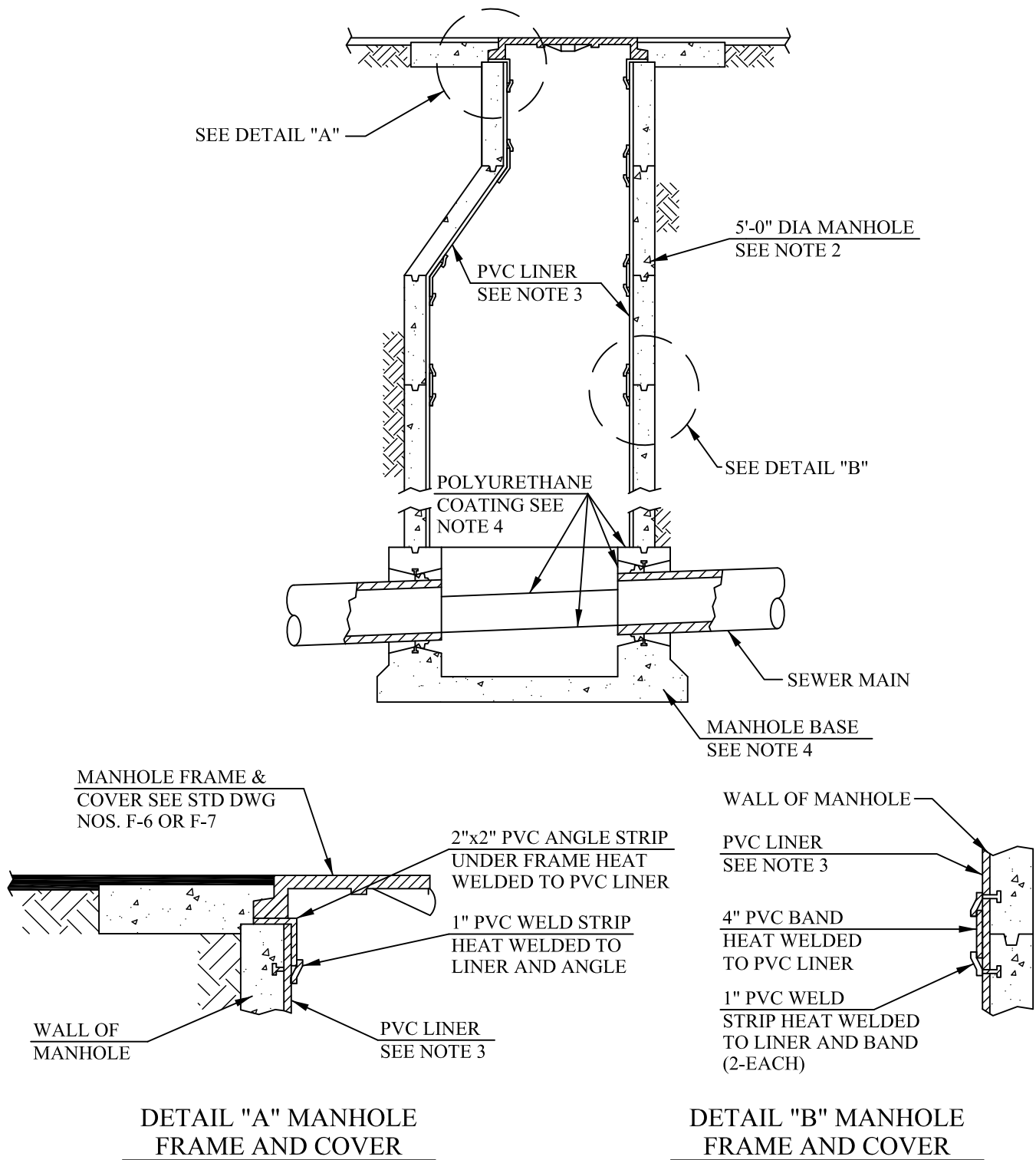
1. SEE STANDARD SPECIFICATION SECTION 03461.
2. FOR MANHOLE FRAME TO MANHOLE CONNECTIONS, SEE STD DWG NO. F-6.

# OLIVENHAIN MUNICIPAL WATER DISTRICT

**BOYLE**  
ENGINEERING  
CORPORATION

24" MANHOLE FRAME AND COVER

STD DWG NO.  
F-7  
JUNE 2008



NOTES:

1. SEE STANDARD SPECIFICATION SECTION 03461.
2. MANHOLES FOR SEWER MAINS 18" AND LARGER SHALL BE COATED AND LINED.
3. MANHOLE SHAFT, CONE SECTION, AND GRADE RINGS SHALL HAVE A PVC LINER WITH T-SHAPED SUPPORTS INTERGRALLY CAST INTO THE CONCRETE.
4. ELASTOMERIC POLYURETHANE COATING SHALL BE APPLIED TO THE INTERIOR OF MANHOLE BASES.

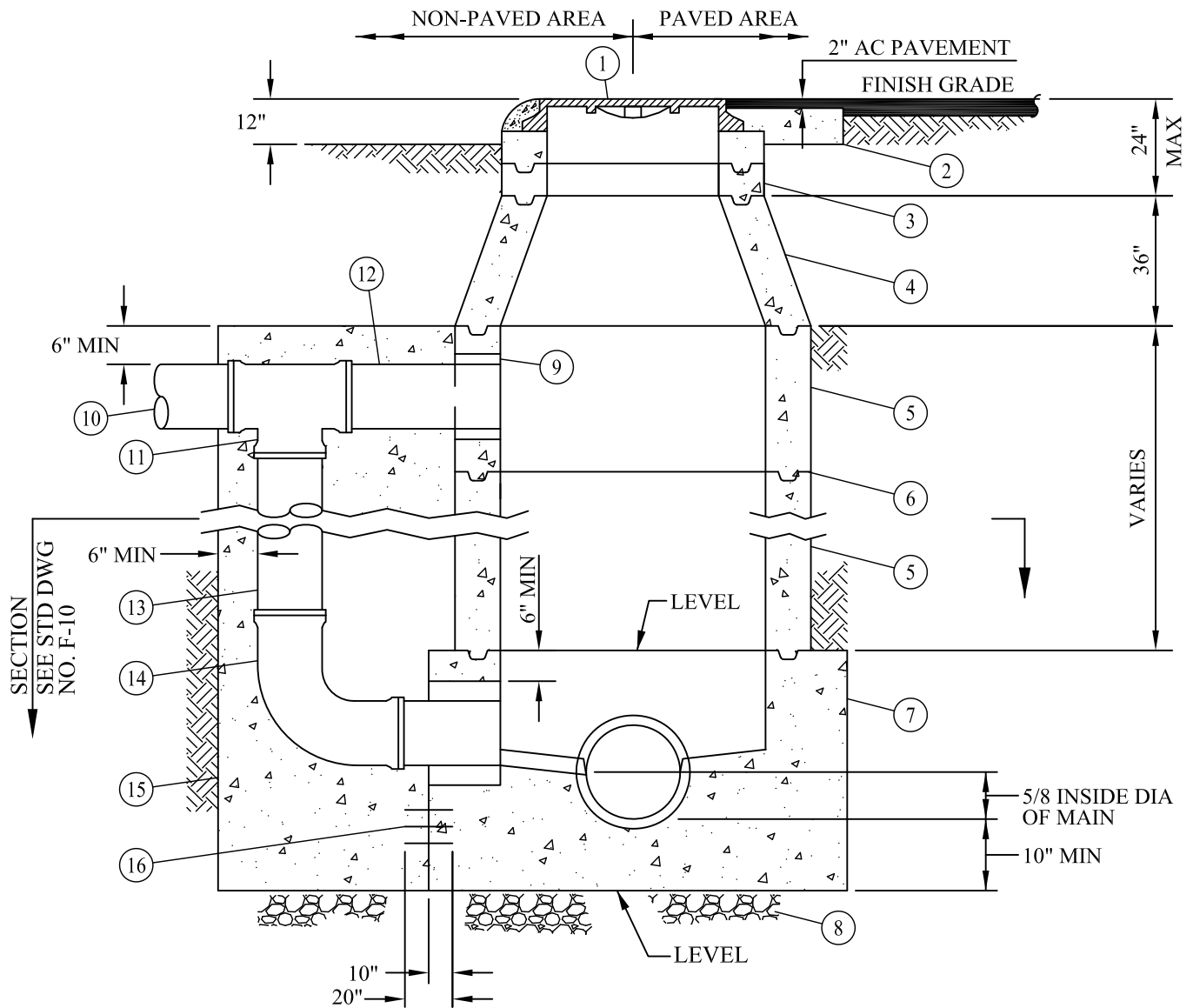
# OLIVENHAIN MUNICIPAL WATER DISTRICT

**BOYLE**  
ENGINEERING  
CORPORATION

MANHOLE COATING AND  
LINING SYSTEM

STD DWG NO.  
F-8  
JUNE 2008





NOTE:  
1. FOR DROP MANHOLE NOTES, SEE STD DWG NO. F-10.

LEGEND ON PLANS

ITEM	DESCRIPTION	SPEC/DWG
1	24" OR 36" MANHOLE FRAME AND COVER(S)	03461/F-6/F-7
2	12" WIDE x 6" THICK CONCRETE RING	03000
3	24" OR 36" DIA PRECAST CONC GRADE RINGS, 6" TO 18" HIGH	03461
4	PRECAST CONCRETE ECCENTRIC CONE, 2' x 4' OR 3' x 5'	03461
5	4'-0" OR 5'-0" DIA PRECAST CONC SHAFT SECTIONS	03461
6	WATERTIGHT JOINTS	03461/F-5
7	PRECAST OR CAST IN PLACE CONCRETE BASE	03461/03000/F-3
8	3/4" CRUSHED ROCK, 6" THICK	02223
9	MANHOLE PIPE CONNECTORS	03461/F-4
10	SEWER PIPE	15065
11	GASKETED TEE, RUN & BRANCH SAME SIZE AS ITEM 10	15065
12	SEWER PIPE, 12" LONG	15065
13	DROP SEWER PIPE, LENGTH AS REQUIRED	15065
14	GASKETED 90° LONG RADIUS BEND	15065
15	CONCRETE ENCASEMENT	02223
16	#4 DOWELS @ 6" ON CENTER, EPOXY INTO EXST OR NEW MH	03000

## OLIVENHAIN MUNICIPAL WATER DISTRICT

**BOYLE**  
ENGINEERING  
CORPORATION

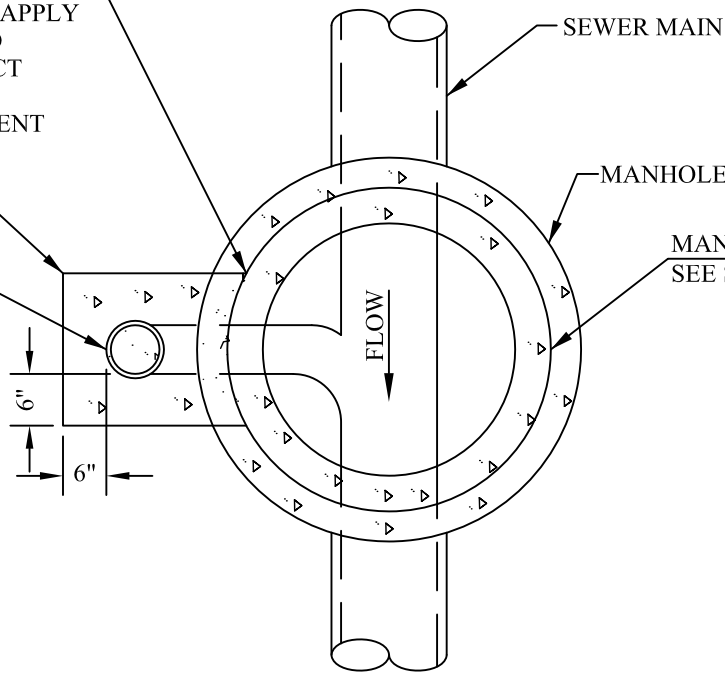
4'-0" AND 5'-0" DIAMETER DROP  
MANHOLE FOR SEWER MAINS

STD DWG NO.  
F-9  
JUNE 2008

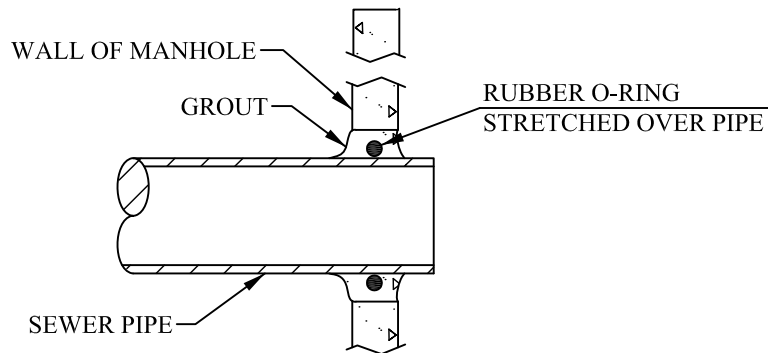
CLEAN & ROUGHEN SURFACE  
OF SHAFT SECTION & APPLY  
BONDING COMPOUND  
TO AREAS OF CONTACT  
BEFORE POURING  
CONCRETE ENCASEMENT

CONCRETE  
ENCASEMENT

DROP SEWER PIPE



DROP MANHOLE SECTION



DROP MANHOLE PIPE CONNECTOR

NOTES:

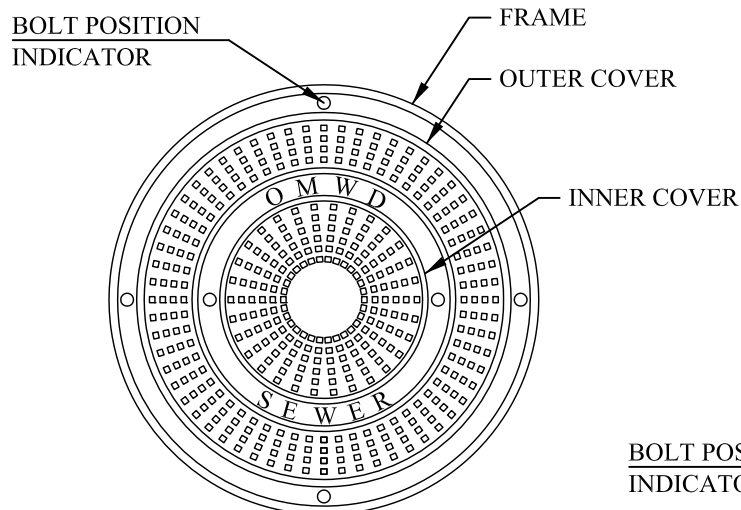
1. SEE STANDARD SPECIFICATION SECTION 03461.
2. VERTICAL WALL OF CONE TO BE ON THE UPSTREAM SIDE OF MANHOLE. SEE STD DWG NO. F-5 FOR ACCESS LOCATIONS.
3. DROP MANHOLES INSTALLED ON SEWER MAINS 18" AND LARGER SHALL INCORPORATE A 4" SHELF AS SHOWN ON STD DWG NO. F-3.
4. INSIDE SURFACES OF DROP MANHOLES TO BE COATED AND LINED, PER STD DWG NO. F-8.
5. DROP MANHOLES SHALL BE INSTALLED ONLY WITH PRIOR APPROVAL OF THE DISTRICT.

# OLIVENHAIN MUNICIPAL WATER DISTRICT

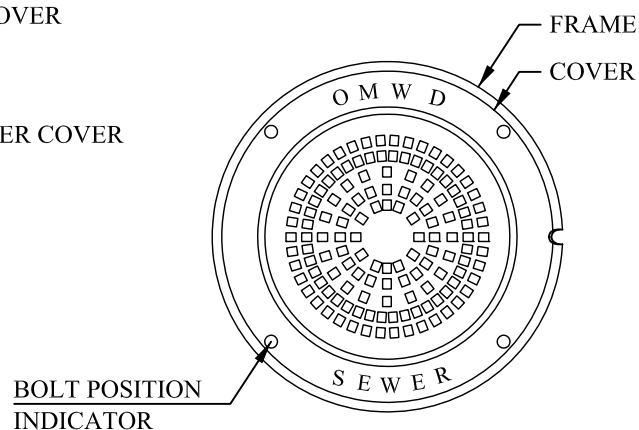
**BOYLE**  
ENGINEERING  
CORPORATION

4'-0" OR 5'-0" DIAMETER DROP MANHOLE  
SECTION, DETAIL AND NOTES

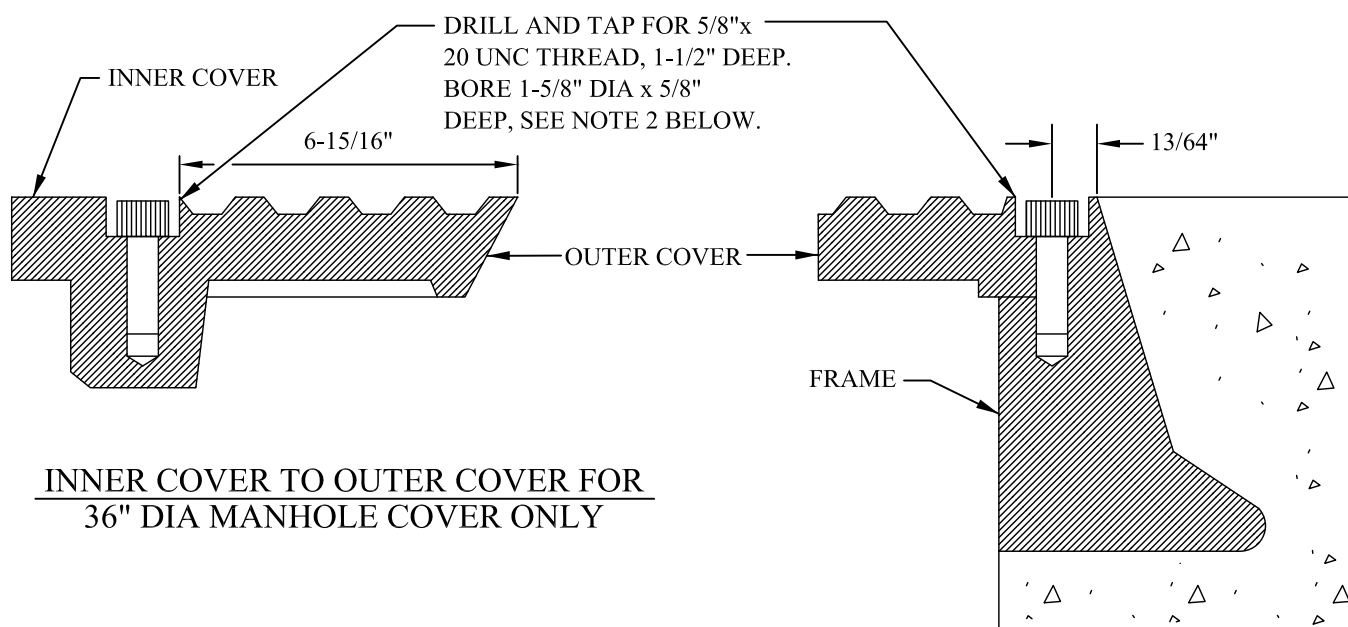
STD DWG NO.  
**F-10**  
JUNE 2008



CONCENTRIC COVERS AND FRAME  
BOLT PLACEMENT-36" DIA MANHOLE



COVER AND FRAME  
BOLT PLACEMENT-24" DIA MANHOLE



INNER COVER TO OUTER COVER FOR  
36" DIA MANHOLE COVER ONLY

OUTER COVER TO FRAME

NOTES:

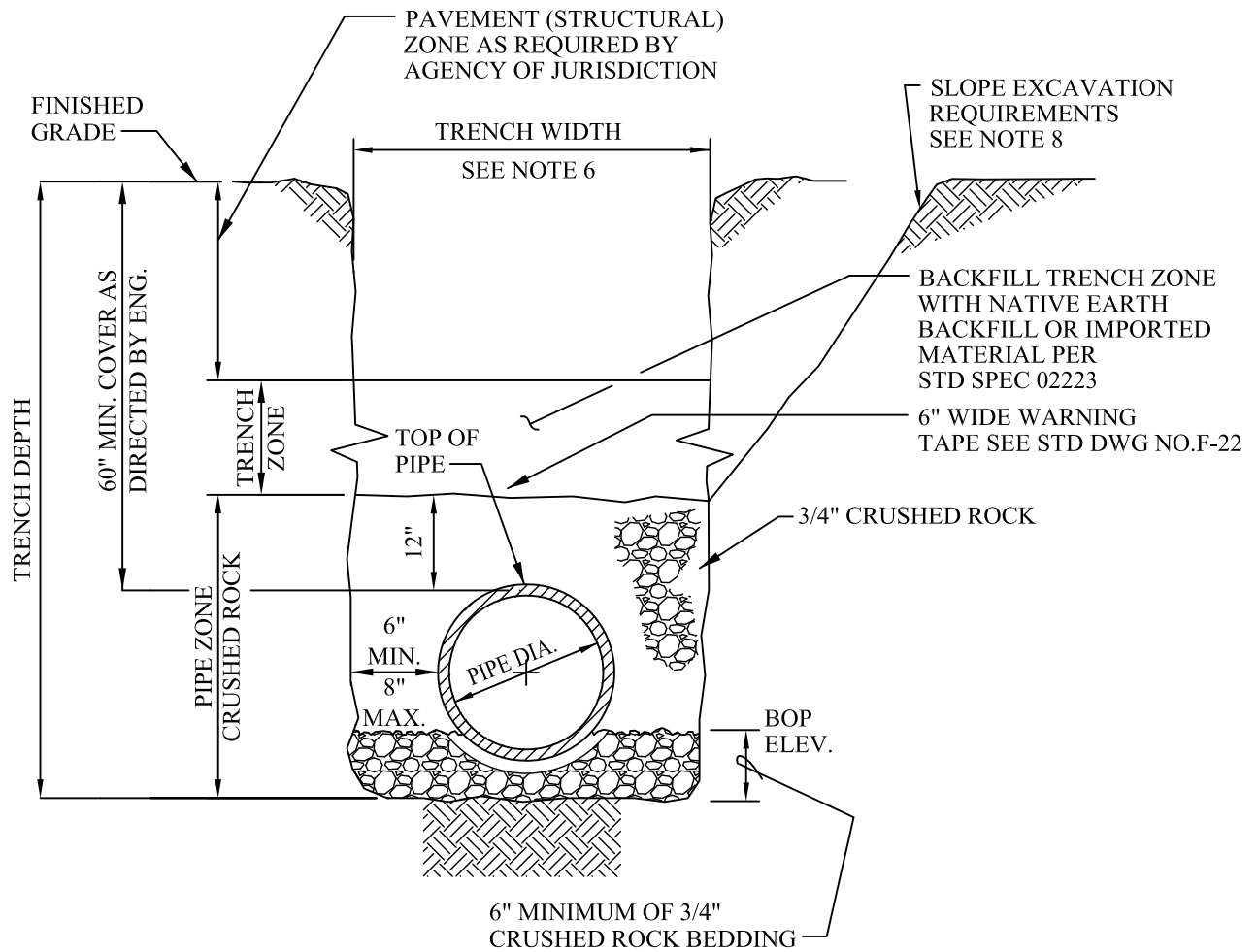
1. SEE STANDARD SPECIFICATION SECTION 03461.
2. 5/8" x 20 UNC THREAD, 316 STAINLESS STEEL SOCKET HEAD CAP SCREW AND 1-1/2" OD x 11/16" ID x 5/64" THICK 316 STAINLESS STEEL WASHER.
3. BOLTDOWN PATTERNS:  
BETWEEN INNER AND OUTER COVERS, INSTALL TWO (2) BOLTS AT 180-DEGREES.  
BETWEEN OUTER COVER AND FRAME, INSTALL FOUR (4) BOLTS AT 90-DEGREES.

# OLIVENHAIN MUNICIPAL WATER DISTRICT

**BOYLE**  
ENGINEERING  
CORPORATION

LOCKING MANHOLE COVER

STD DWG NO.  
F-11  
JUNE 2008



TRENCH SECTION

NOTES:

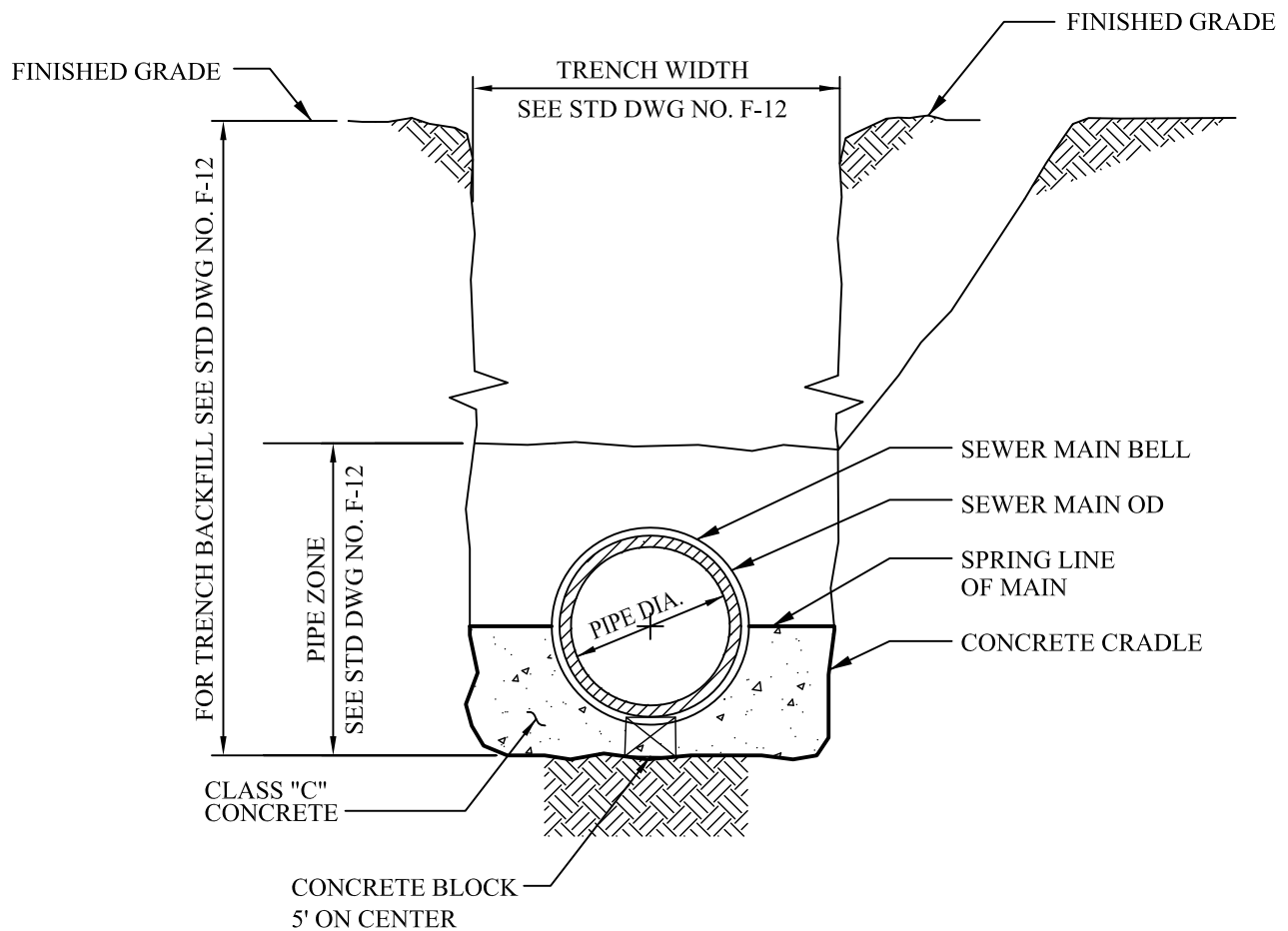
1. SEE STANDARD SPECIFICATION SECTION 02223 AND 15065.
2. PAVING OR PAVEMENT REPAIR TO BE DONE IN ACCORDANCE WITH AGENCY OF JURISDICTION.
3. ALL PIPELINE TRENCHES SHALL BE EXCAVATED SO THAT THE DISTANCE BETWEEN TRENCH WALLS AT THE TOP OF PIPE SHALL BE AS CALLED OUT IN NOTE 6.
4. CONCRETE CRADLE PER STD DWG NO. F-13 SHALL BE USED WHEN THE TRENCH WIDTH AT THE UPPER LIMIT OF THE PIPE ZONE EXCEEDS THE MAXIMUM WIDTH SPECIFIED.
5. EXCAVATE BELL HOLES AT EACH JOINT TO PERMIT PROPER ASSEMBLY AND INSPECTION OF THE ENTIRE JOINT.
6. THE TRENCH WIDTH EQUALS, SEWER MAIN OD PLUS 12" MIN., 16" MAX.
7. FOR BEDDING AND BACKFILL OF TRENCHES FOR POTABLE WATER AND RECYCLED WATER FACILITIES SEE STD DWG NO. E-2.1.
8. CONTRACTOR IS SOLELY RESPONSIBLE FOR JOBSITE AND TRENCH SAFETY AND SHALL ASSURE ALL OSHA AND OTHER FEDERAL, STATE AND LOCAL REGULATIONS AND REQUIREMENTS PRETAINING TO TRENCH CONSTRUCTION ARE MET.

# OLIVENHAIN MUNICIPAL WATER DISTRICT

**BOYLE**  
ENGINEERING  
CORPORATION

**PIPE BEDDING AND TRENCH BACKFILL  
FOR SEWER FACILITIES**

**STD DWG NO.**  
**F-12**  
JUNE 2008



TRENCH SECTION

NOTES:

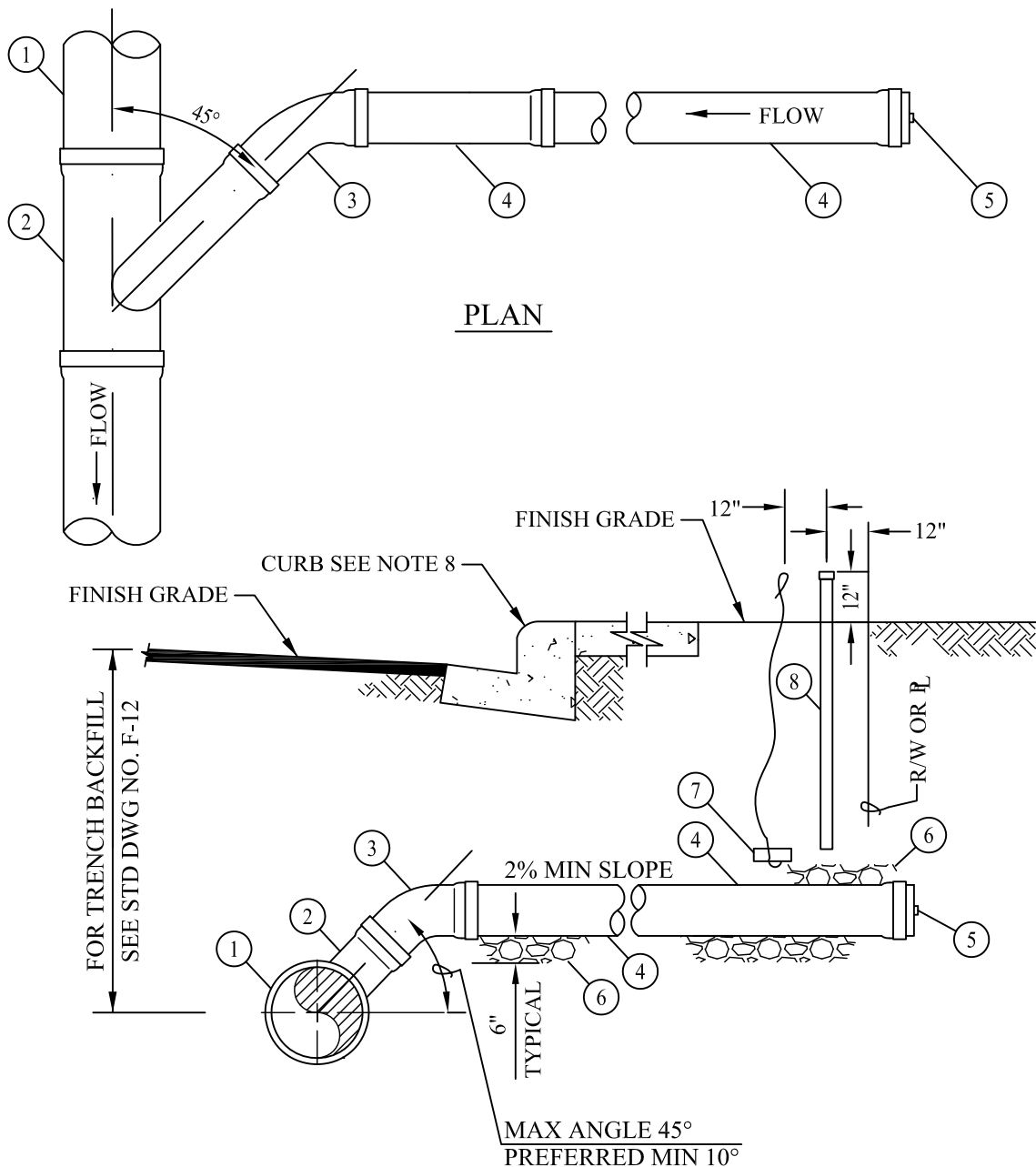
1. SEE STANDARD SPECIFICATION SECTION 02223.
2. CONCRETE CRADLE SHALL BE USED AS DIRECTED BY THE DISTRICT ENGINEER WHEN THE TRENCH WIDTH AT THE UPPER LIMIT OF THE PIPE ZONE EXCEEDS THE MAX WIDTH SPECIFIED ON STD DWG NO. F-12.
3. ALTERNATE PIPE MATERIALS MAY BE USED, SUCH AS AWWA C-900 OR C-905 WATER PIPE AS DIRECTED BY THE DISTRICT ENGINEER.
4. FOR PIPE BEDDING AND TRENCH BACKFILL, SEE STD DWG NO. F-12.

# OLIVENHAIN MUNICIPAL WATER DISTRICT

**BOYLE**  
ENGINEERING  
CORPORATION

CONCRETE PIPE CRADLE

STD DWG NO.  
**F-13**  
JUNE 2008



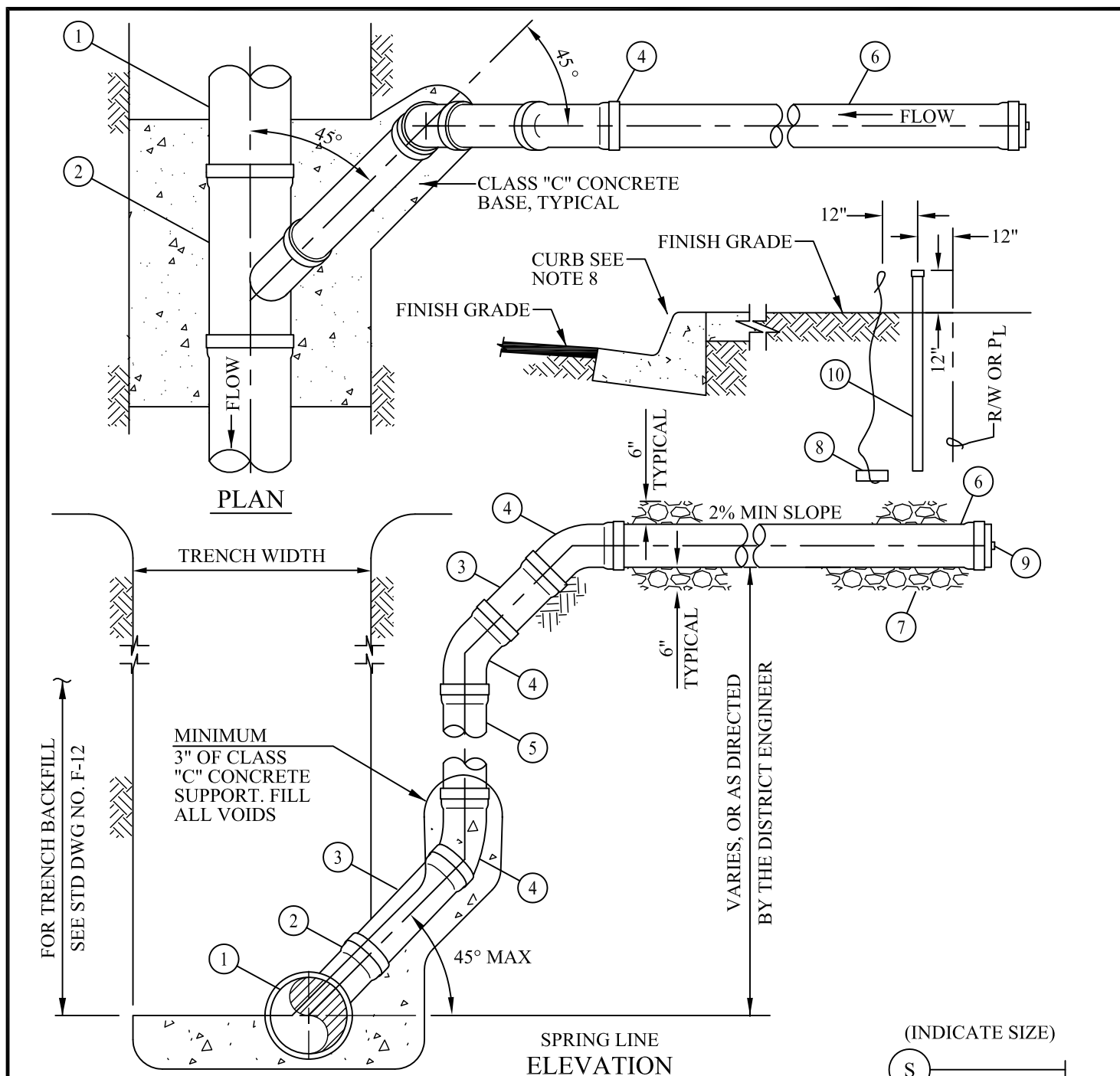
ITEM	DESCRIPTION	SPEC/DWG
1	SEWER MAIN	15065
2	45° WYE	15065
3	45° ELBOW	15065
4	PVC PIPE LATERAL, SEE NOTES 3 & 5	15065/F-16
5	PVC PLUG OR CAP	15065
6	3/4" CRUSHED ROCK, 6" THICK	02223
7	#10 WIRE ATTACHED TO A BRICK	15065
8	4" PVC PIPE WITH GLUED CAP	15065

## OLIVENHAIN MUNICIPAL WATER DISTRICT

**BOYLE**  
ENGINEERING  
CORPORATION

4" AND 6" SEWER  
LATERAL INSTALLATION

STD DWG NO.  
F-14  
JUNE 2008



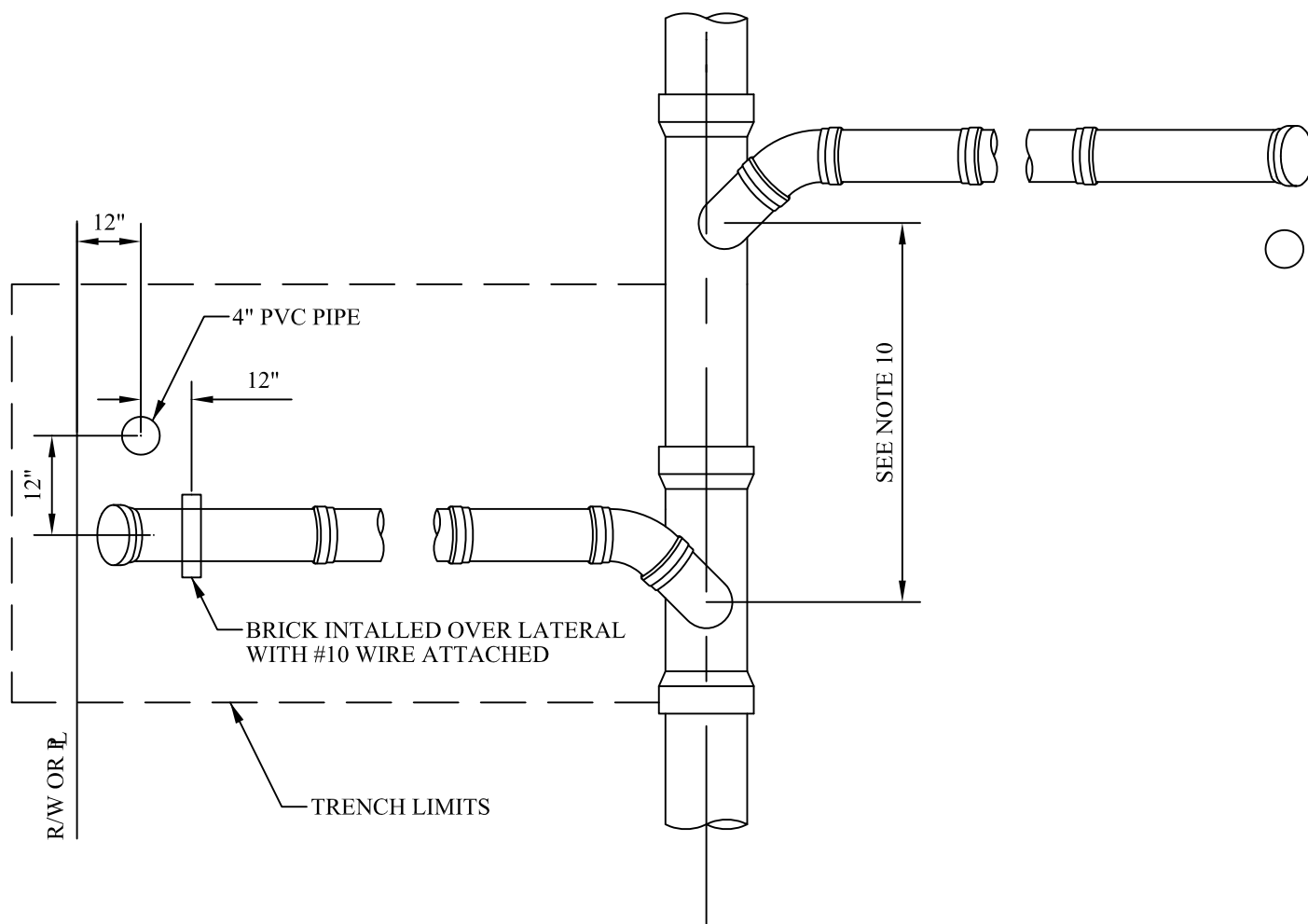
ITEM	DESCRIPTION	SPEC/DWG
1	SEWER MAIN	15065
2	45° WYE	15065
3	PVC PIPE	15065
4	45° BELOW	15065
5	PVC PIPE, SEE NOTE 6	15065/F-16
6	PVC PIPE LATERAL, SEE NOTES 3 & 5	15065/F-16
7	3/4" CRUSHED ROCK, 6" THICK	02223
8	#10 WIRE ATTACHED TO A BRICK	15065
9	PVC PLUG OR CAP	15065
10	4" PVC PIPE WITH GLUED CAP	15065

## OLIVENHAIN MUNICIPAL WATER DISTRICT

**BOYLE**  
ENGINEERING  
CORPORATION

4" AND 6" DEEP-CUT  
SEWER LATER INSTALLATION

STD DWG NO.  
**F-15**  
JUNE 2008



### SEWER LATERAL DETAIL

SEE NOTE 10 BELOW

#### NOTES:

1. SEE STANDARD SPECIFICATION SECTION 15065.
2. IN NO CASE SHALL A LATERAL CONNECT DIRECTLY ON TOP OF A SEWER MAIN.
3. LATERAL SHALL BE INSTALLED TO PROPERTY LINE UNLESS SPECIFIED ON PLANS.
4. MINIMUM 4' COVER ABOVE LATERAL AT PROPERTY LINE.
5. LATERAL TO HAVE A MINIMUM SLOPE OF 2%.
6. VERTICAL PIPE SHALL BE BRACED WHILE BACKFILLING TRENCH.
7. INSTALL WARNING/IDENTIFICATION TAPE AS SHOWN ON STD DWG NO. F-22.
8. STAMP OR CHISEL A 2" HIGH "S" IN CURB FACE OVER LATERAL TO IDENTIFY SEWER LATERAL LOCATION.
9. FOR SEWER LATERAL INSTALLATIONS, SEE STD DWG NOS. F-14 AND F-15.
10. SEWER MAIN SHALL HAVE A MINIMUM 3' SECTION OF PIPE BETWEEN FITTINGS.

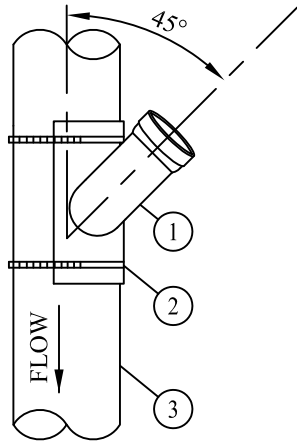
## OLIVENHAIN MUNICIPAL WATER DISTRICT

**BOYLE**  
ENGINEERING  
CORPORATION

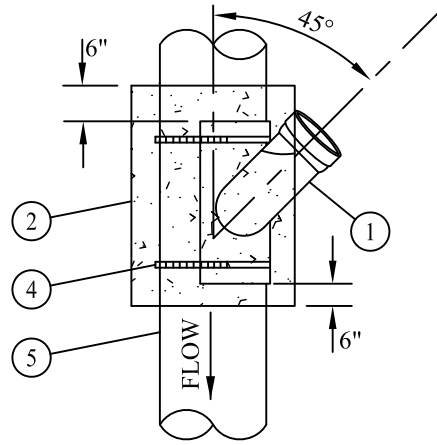
SEWER LATERAL  
NOTES AND DETAIL

STD DWG NO.  
**F-16**  
JUNE 2008

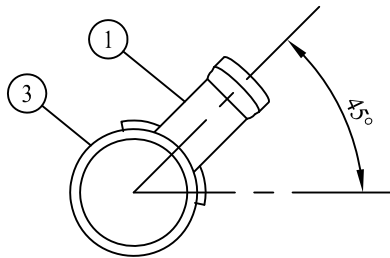




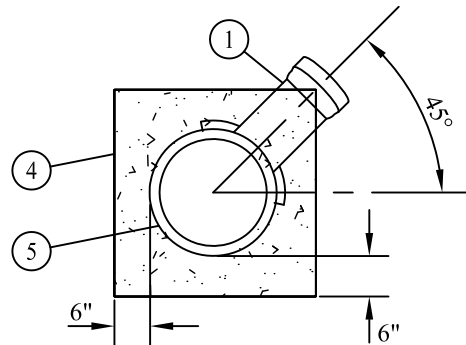
PLAN



PLAN



ELEVATION



ELEVATION

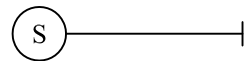
CUT IN WYE CONNECTION  
FOR EXISTING PVC PIPE  
TYPE A

CUT IN WYE CONNECTION  
FOR EXISTING PVC PIPE  
TYPE B

NOTES:

1. SEE STANDARD SPECIFICATION SECTION 15065.
2. CONNECTIONS TO EXISTING SEWER MAINS TO BE MADE BY DISTRICT PERSONNEL UNLESS OTHERWISE NOTED ON PLANS.
3. IN NO CASE SHALL CONNECTION BE MADE DIRECTLY ON TOP OF SEWER MAIN.
4. NO MORE THAN ONE CUT IN WYE WILL BE ALLOWED FOR EACH LENGTH OF ANY EXISTING VCP SEWER MAIN.
5. FOR SEWER LATERAL INSTALLATION, SEE STD DWG NOS. F-14 AND F-15.
6. FOR TRENCH BACKFILL, SEE STD DWG NO. F-12.

(INDICATE SIZE)



LEGEND ON PLANS

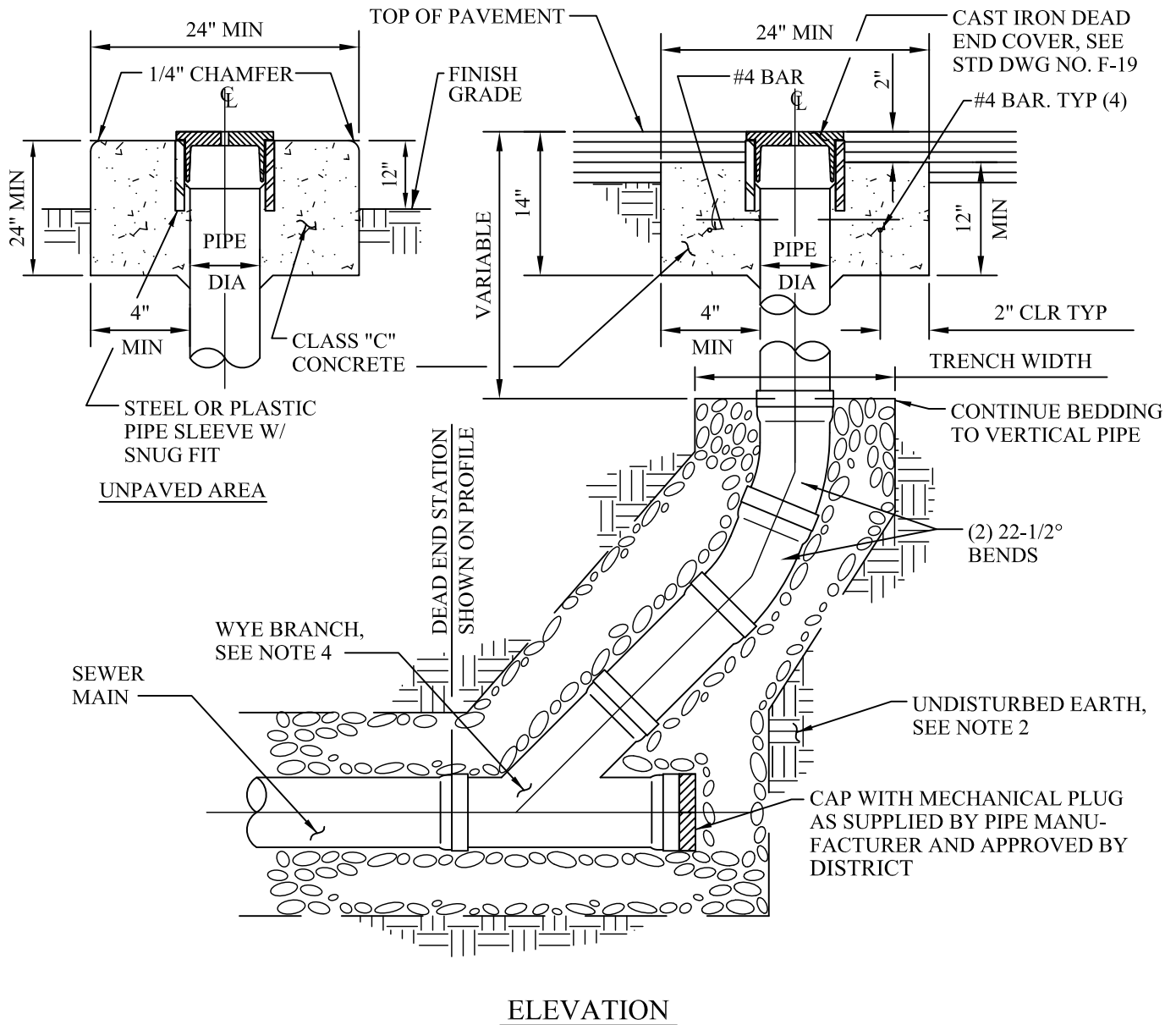
ITEM	DESCRIPTION	SPEC/DWG
1	45° SADDLE WYE WITH GASKET	15065
2	STAINLESS STEEL HOSE CLAMPS (2-EACH)	15065
3	EXISTING PVC SEWER MAIN	-
4	CLASS "C" CONCRETE ENCASEMENT	02223
5	EXISTING VCP SEWER MAIN	-

## OLIVENHAIN MUNICIPAL WATER DISTRICT

**BOYLE**  
ENGINEERING  
CORPORATION

SEWER CUT  
IN WYE CONNECTIONS

STD DWG NO.  
**F-17**  
JUNE 2008



NOTES:

1. THE SEWER MAIN SHALL BE LAID FOR THE FULL LENGTH AND DEPTH SHOWN ON THE PLAN AND PROFILE TO THE POINT MARKED DEAD END (D.E.).
2. THE TRENCH FOR A DEAD END SHALL BE EXCAVATED ONLY TO SUBGRADE, WHICH IS THE BOTTOM OF THE SLOPING PIPE AND FITTINGS. SHOULD THE EXCAVATION FOR ANY REASON BE CARRIED BELOW SUBGRADE, IT SHALL BE REFILLED TO SUBGRADE WITH CRUSHED ROCK WHICH SHALL BE TAMPED UNTIL FIRM AND UNYIELDING. SHOULD A FIRM AND UNYIELDING FOUNDATION BE UNOBTAINABLE BY THIS METHOD A CONCRETE PIPE CRADLE SHALL BE USED.
3. DEAD END SHALL BE SAME SIZE PIPE DIAMETER AS THE MAIN LINE SEWER.
4. WYE BRANCH SHALL BE REPLACED WITH (2) 22-1/2° BENDS, IN AREAS WHERE SEWER WILL NOT BE EXTENDED.
5. CLEANOUT COLLAR SHALL BE CENTERED IN CONCRETE COLLAR.

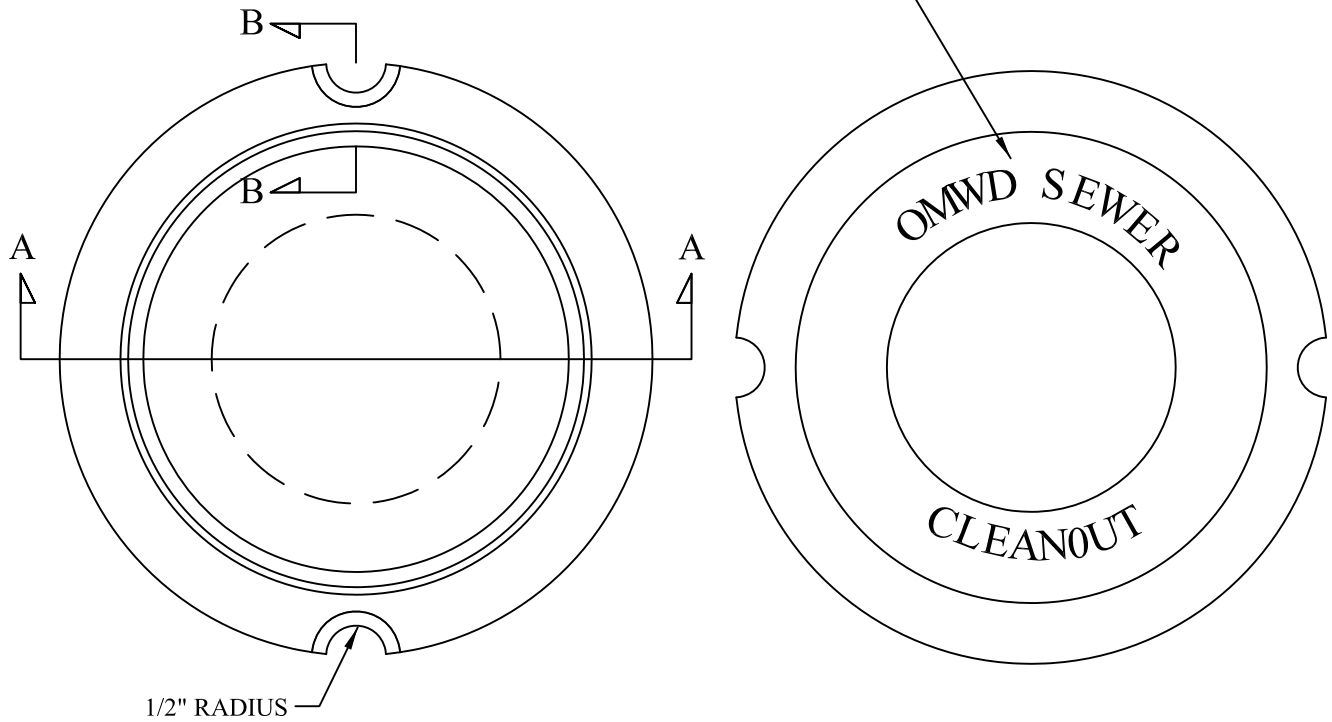
# OLIVENHAIN MUNICIPAL WATER DISTRICT

**BOYLE**  
ENGINEERING  
CORPORATION

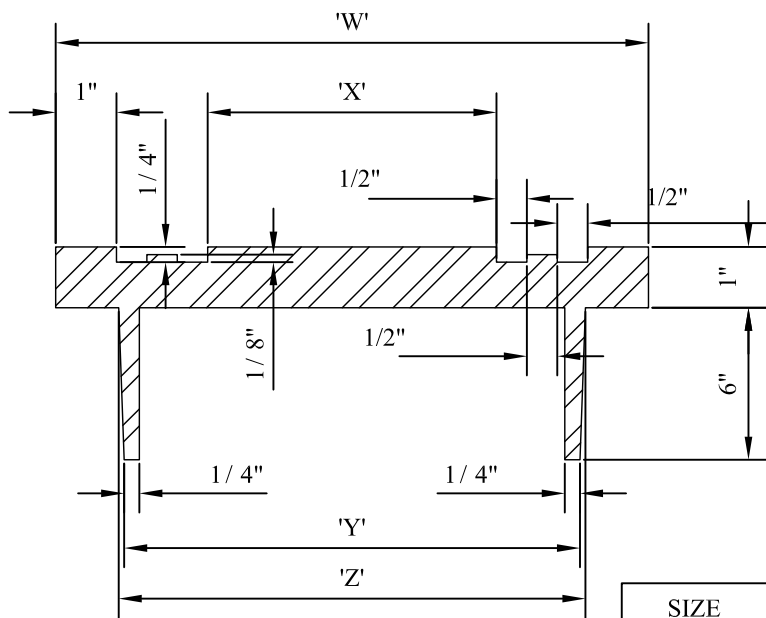
STANDARD DEAD END  
(CLEANOUT)

STD DWG NO.  
**F-18**  
JUNE 2008

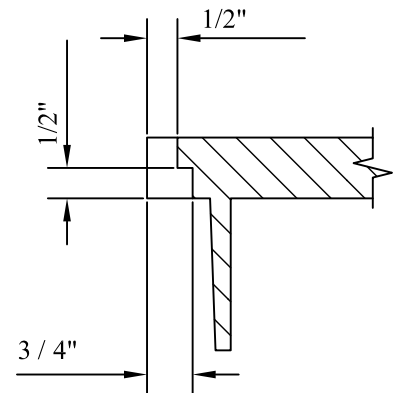
1/2" HIGH LETTERS, RAISED 1/8"



BOTTOM VIEW



SECTION A-A



SECTION B-B

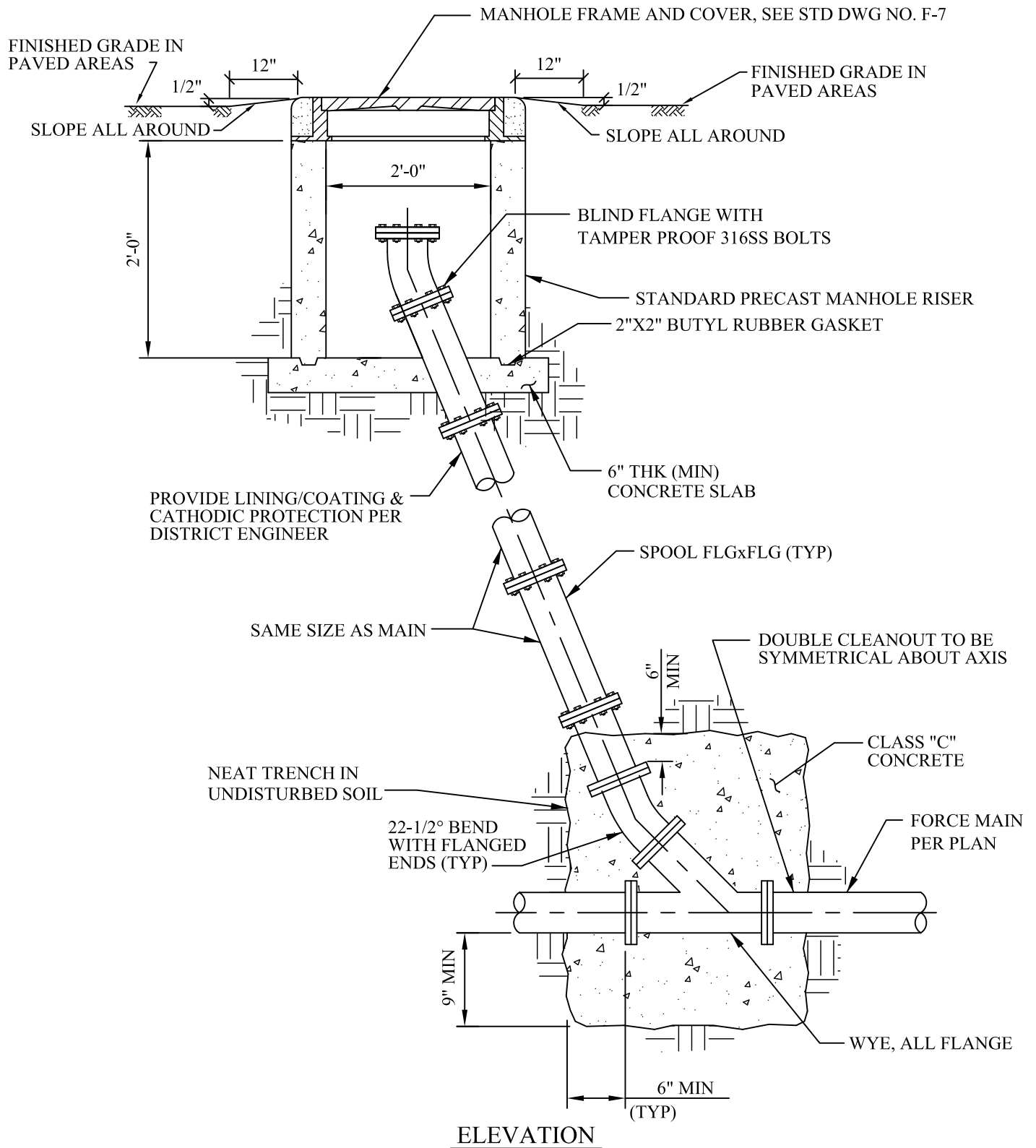
SIZE	'W'	'X'	'Y'	'Z'
6" PIPE	9-3/4"	4-3/4"	7-1/2"	7-3/4"
8" PIPE	11-3/4"	6-3/4"	9-1/2"	9-3/4"

# OLIVENHAIN MUNICIPAL WATER DISTRICT

**BOYLE**  
ENGINEERING  
CORPORATION

STANDARD CLEANOUT COVER

STD DWG NO.  
**F-19**  
JUNE 2008



NOTES:

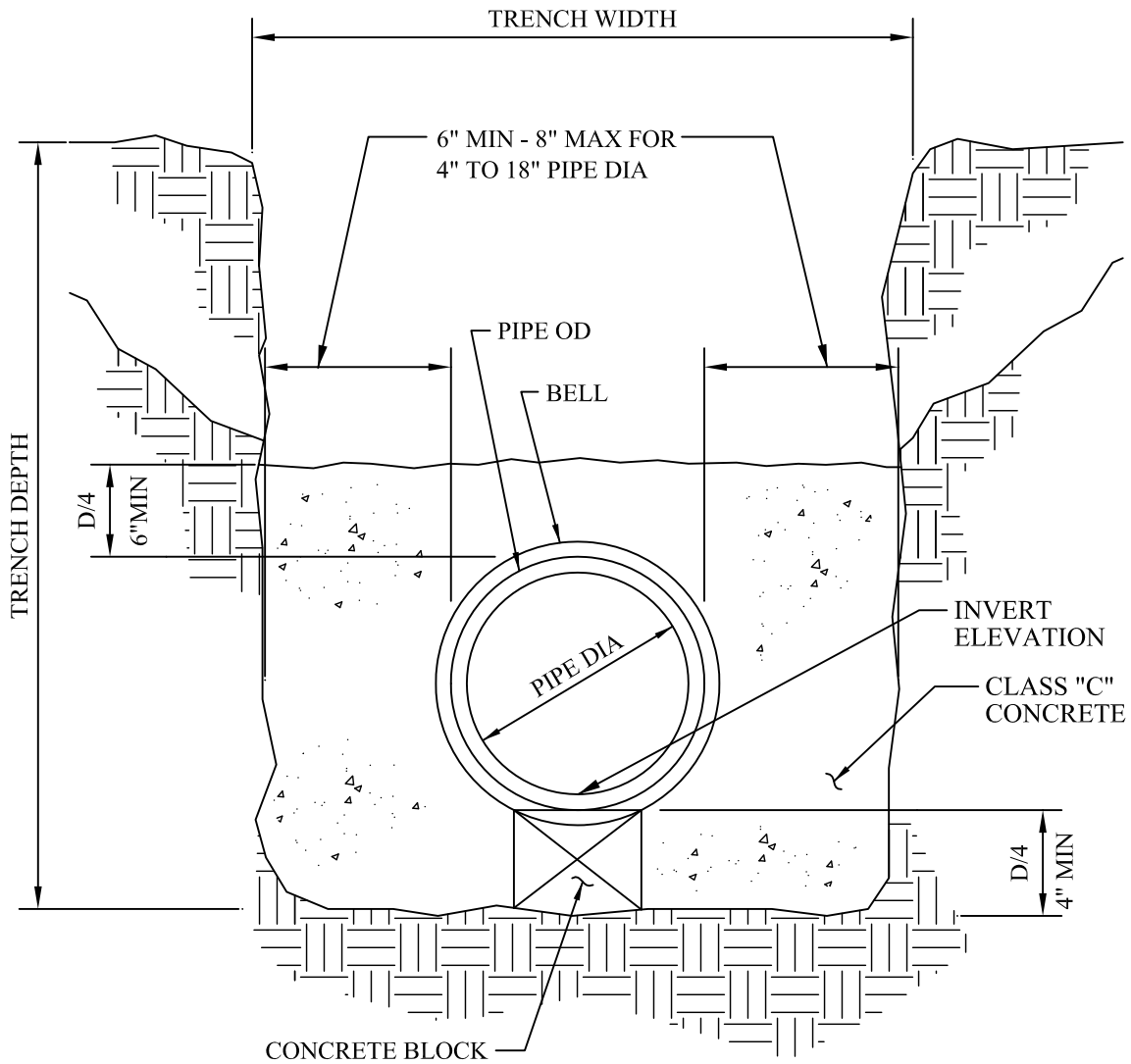
1. SIMILAR POLYVINYL CHLORIDE COMPONENTS SHALL BE USED IN ACCORDANCE WITH ASTM D3033 AND HAVE SOLVENT CEMENT JOINTS.
2. CONCRETE SLAB TO BE CLASS "C".

# OLIVENHAIN MUNICIPAL WATER DISTRICT

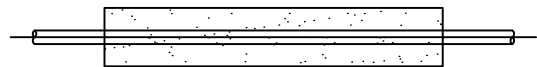
**BOYLE**  
ENGINEERING  
CORPORATION

CLEANOUT  
SEWER FORCE MAIN

STD DWG NO.  
F-20  
JUNE 2008



SECTION



LEGEND ON PLANS

NOTE:

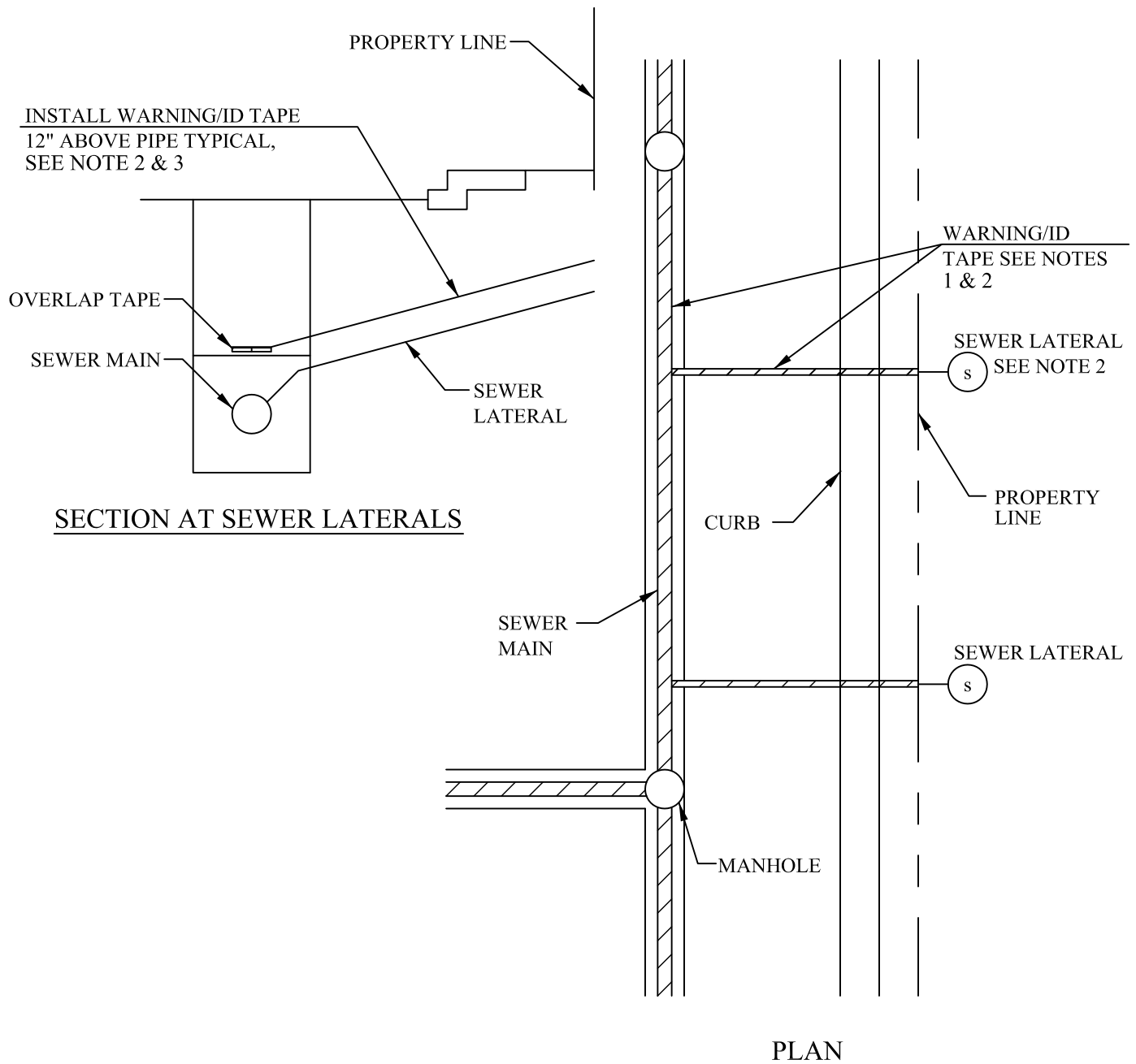
1. ENCASE PIPE TO NEAREST FLEXIBLE JOINT.

# OLIVENHAIN MUNICIPAL WATER DISTRICT

**BOYLE**  
ENGINEERING  
CORPORATION

CONCRETE  
ENCASEMENT

STD DWG NO.  
F-21  
JUNE 2008



NOTES:

1. SEWER LINES SHALL HAVE A 6" WIDE GREEN WARNING/IDENTIFICATION TAPE MARKED "CAUTION SEWER LINE BURIED BELOW" SEE NOTE 3.
2. WARNING/IDENTIFICATION TAPE SHALL BE INSTALLED 12" ABOVE THE PIPE AND PLACED CONTINUOUSLY ALONG THE ENTIRE LENGTH OF THE PIPE AND ALL RELATED APPURTENANCES.
3. FOR SEWER LATERALS EXTEND TAPE TO PROPERTY LINE.
4. FOR PIPE BEDDING AND TRENCH BACKFILL, SEE STD DWG NO. F-12.

# OLIVENHAIN MUNICIPAL WATER DISTRICT

**BOYLE**  
ENGINEERING  
CORPORATION

WARNING / IDENTIFICATION  
TAPE INSTALLATION

STD DWG NO.  
**F-22**  
JUNE 2008